

PAINT TOWNSHIP
S.E. QTR. SECTION 35
S.W. QTR. SECTION 36
T-15N R-11W
HOLMES COUNTY, OHIO



SCALE: 1" = 300'

- STONE FOUND
- IRON PIN FOUND
- 5/8" RE BAR WITH I.D. CAP SET
I.D. CAP MARKED "BAKER 6938"

REFERENCES:

- PLAT VOL. 8 PAGE 559
- PLAT VOL. 7 PAGE 213
- PLAT VOL. 5 PAGE 110
- PLAT VOL. 8 PAGE 803
- PLAT VOL. 8 PAGE 1010
- PLAT VOL. 10 PAGE 823
- PLAT VOL. 10 PAGE 829
- DEED VOL. 243 PAGE 671
- DEED VOL. 228 PAGE 436
- DEED VOL. 252 PAGE 842



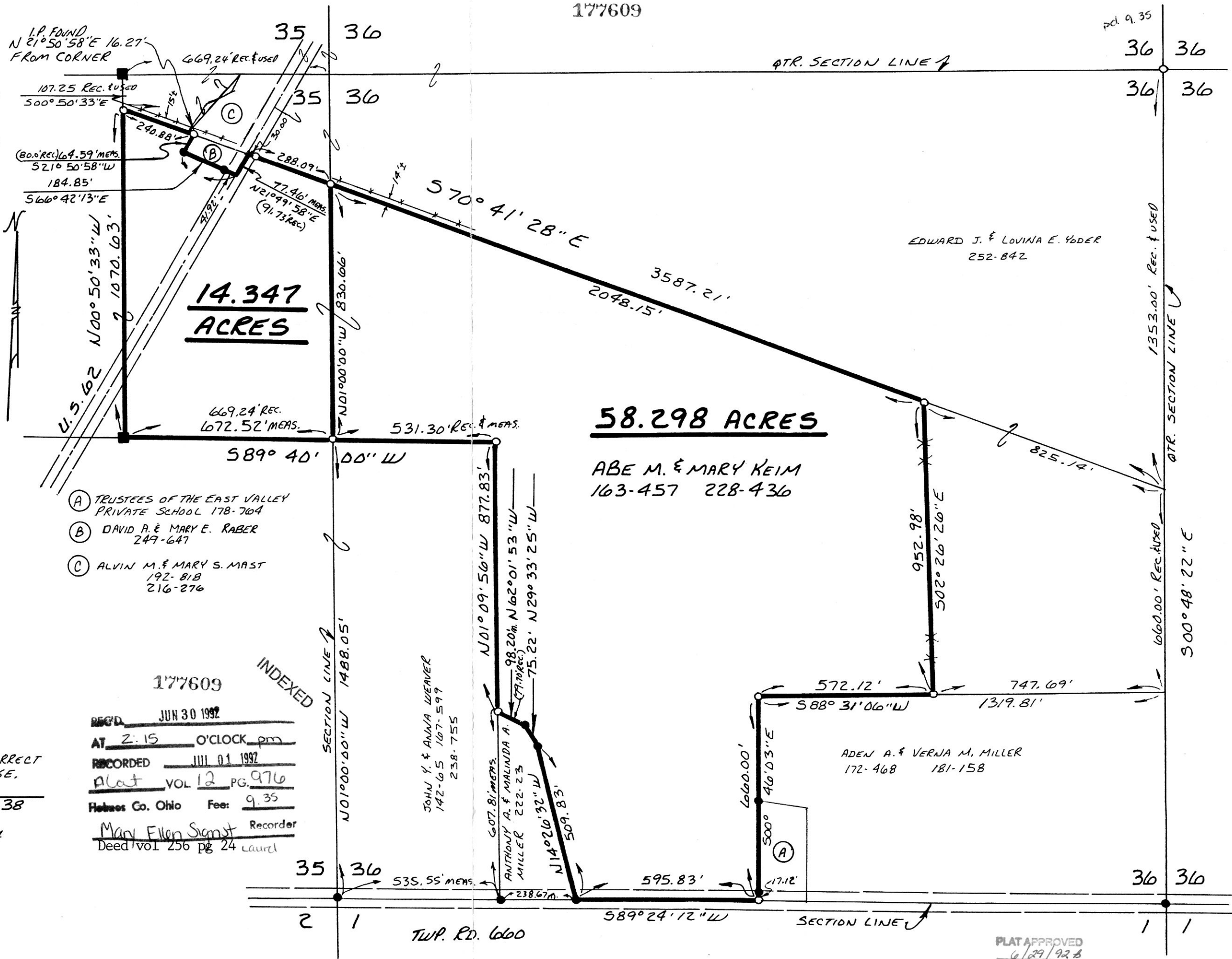
I CERTIFY THIS SURVEY TO BE CORRECT TO THE BEST OF MY KNOWLEDGE.

Donald C. Baker
DONALD C. BAKER P.S. 6938

5958 T.R. 322
MILLERSBURG, OHIO 44654
PH. (216) 674-4788

MAY 13, 1992

17692-MLS



- (A) TRUSTEES OF THE EAST VALLEY PRIVATE SCHOOL 178-704
- (B) DAVID A. & MARY E. RABER 249-647
- (C) ALVIN M. & MARY S. MAST 192-818 216-276

1777609 INDEXED
REG'D JUN 30 1992
AT 2:15 O'CLOCK pm
RECORDED JUL 01 1992
Plat VOL 12 PG. 976
Holmes Co. Ohio Fee: 9.35
Mary Ellen Sigmst Recorder
Deed Vol. 256 pg 24 Laurel

PLAT APPROVED
6/29/92

VOL 12 PAGE 976