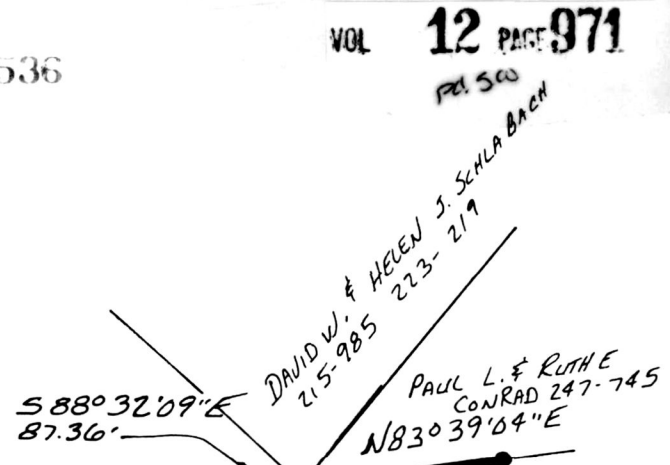
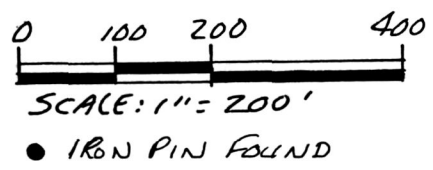


PL 500

MONROE TOWNSHIP
2ND. QTR. LOT 8
T. 9N; R-8W
HOLMES COUNTY OHIO



REFERENCES:

- PLAT VOL. 8 PAGE 473
- " " 12 " 389
- " " 12 " 674
- " " 10 " 732
- " " 12 " 468
- " " 9 " 115
- " " 12 " 467
- " " 12 " 409
- DEED VOL. 197 PAGE 561

BEARINGS FROM PLAT VOL. 10 PAGE 732

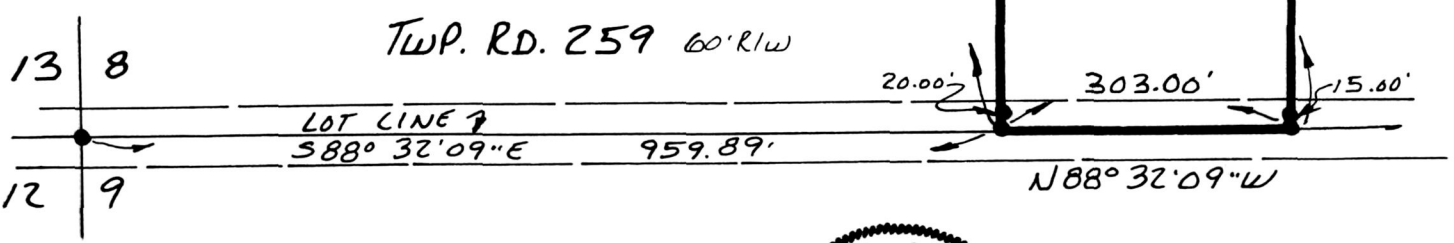
PERRY D. & KATHRYN M. GUY 251-681

N 01° 27' 51" E 1024.58'

7.200 ACRES

THE GRAVEN FARM
197-561

S 01° 27' 51" W 1054.17'



I CERTIFY THIS SURVEY TO BE CORRECT
TO THE BEST OF MY KNOWLEDGE.

Donald C. Baker

DONALD C. BAKER P.S. 6938
5958 T.R. 322
MILLERSBURG, OHIO 44674
PH. (216) 674-4788
MAY 28, 1992



177536

22292-MCS

rec'd. JUN 23 1992

Recorded JUN 24 1992

Plat Vol. 12
Deed vol 255 pg 1035

AT 3:21 O'CLOCK pm

Holmes Co. Ohio Fee: 5.00

Pg. 971 Recorder Mary Ellen Laurel Signst

INDEXED

PLAT APPROVED
6/19/92-B