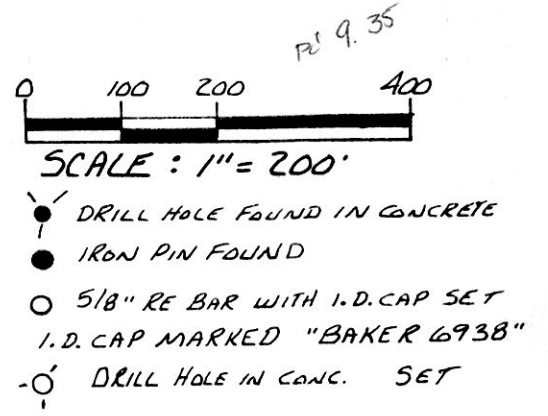


VILLAGE OF MILLERSBURG

175264

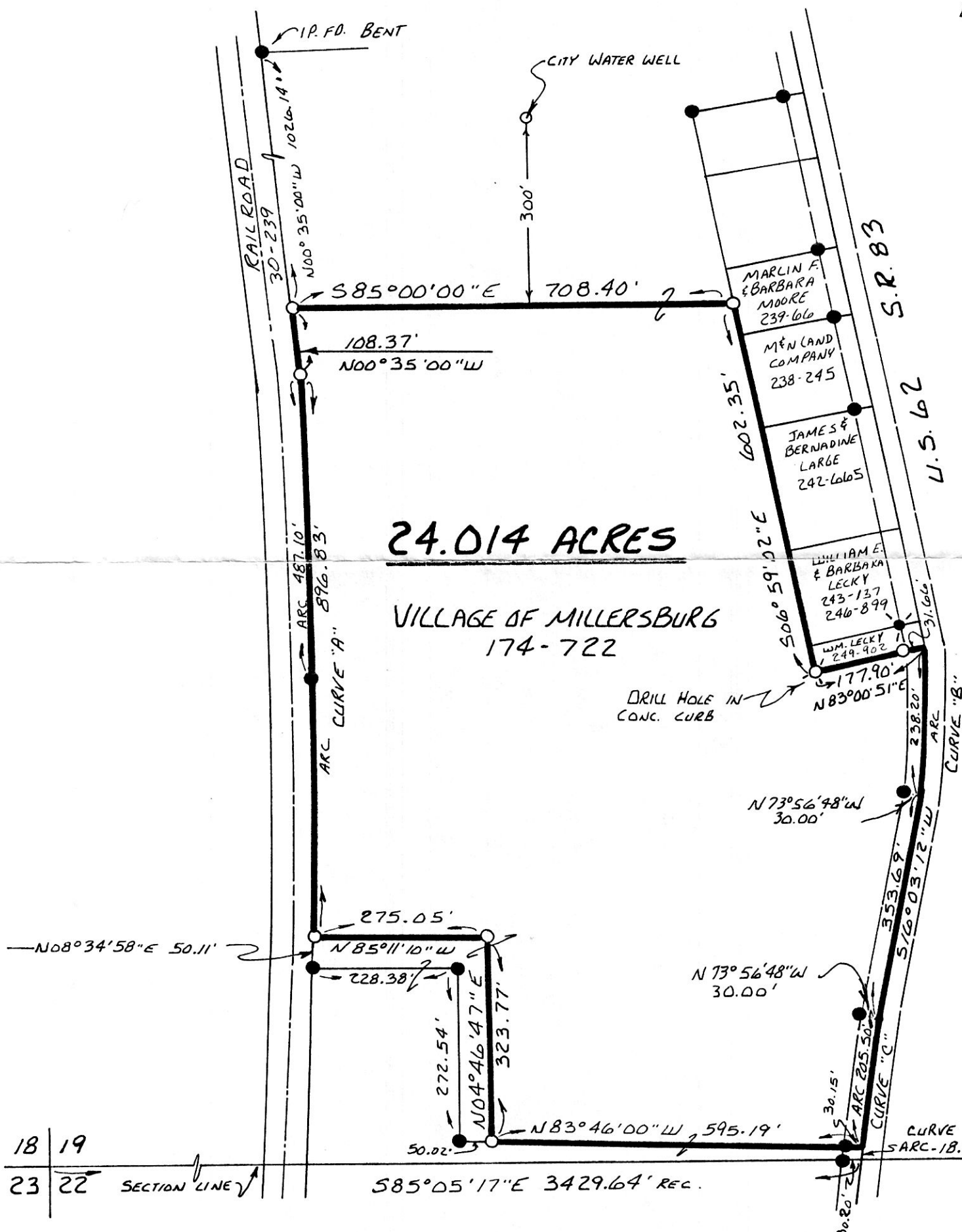
HARDY TOWNSHIP, SECTION 19
T-9N; R-7W, HOLMES COUNTY, OHIO



- REFERENCES:
- PLAT VOL. 5 PAGE 33
 - PLAT VOL. 12 PAGE 592
 - PLAT VOL. 10 PAGE 921
 - PLAT VOL. 12 PAGE 170
 - PLAT VOL. 10 PAGE 854
 - PLAT VOL. 10 PAGE 729
 - PLAT VOL. 12 PAGE 141
 - DEED VOL. 174 PAGE 722
 - BEARINGS FROM PLAT VOL. 2 PAGE 193

CURVE DATA

- CURVE "A"**
- Δ - 08° 55' 01"
 - R - 5762.65'
 - T - 449.32'
 - ARC - 896.83'
 - CH - 895.93'
 - BRG - N03° 52' 30" E
- CURVE "B"**
- Δ - 19° 03' 22"
 - R - 716.20'
 - T - 120.21'
 - ARC - 238.20'
 - CH - 237.10'
 - BRG - S06° 56' 56" W
- CURVE "C"**
- Δ - 04° 06' 36"
 - R - 2864.79'
 - T - 102.19'
 - ARC - 205.50'
 - CH - 205.46'
 - BRG - S13° 59' 54" W
- CURVE "D"**
- Δ - 00° 22' 32"
 - R - 2864.79'
 - T - 9.39'
 - ARC - 18.78'
 - CH - 18.78'
 - BRG - N11° 45' 45" E



I CERTIFY THIS SURVEY TO BE CORRECT TO THE BEST OF MY KNOWLEDGE.

Donald C. Baker
DONALD C. BAKER P.S. 6938
4321 T.R. 252
GLENMONT, OH 44628



LOT SPLIT APPROVED BY
MILLERSBURG VILLAGE
January 27, 1992
Karen S. Shaffer Clerk

AUGUST 29, 1991

175264

INDEXED

1865-MLS

Rec'd. JAN 30 1992 AT 3:52 O'CLOCK pm
Recorded JAN 31 1992 Holmes Co. Ohio Fees 9.35
Plat Vol. 12 Pg. 850 Recorder Mary Ellen Signost
Deed vol 254 pg 324 Tam Lee

PLAT APPROVED
1/30/92