

NORTH

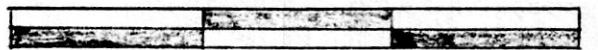
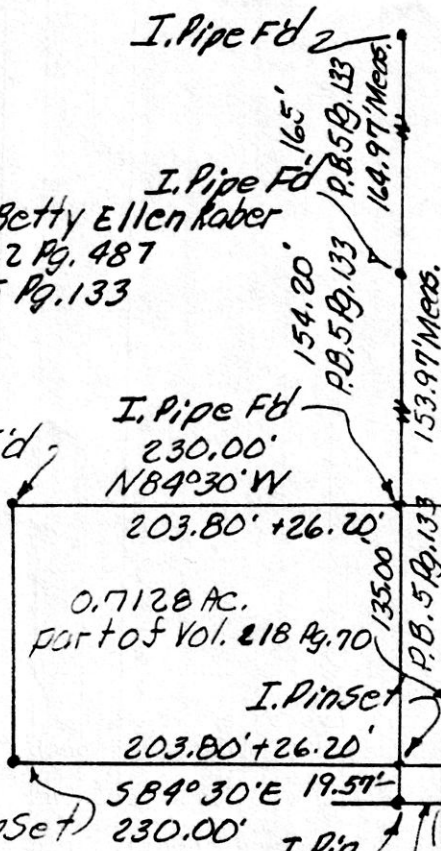
Ben J. & Betty Ellen Raber  
Vol. 243 Vol. 222 Pg. 487  
Pg. 378 P.B. 5 Pg. 133

John A. & Joanna

N5°20'E  
135.00'

Jane Yoder

Vol. 209 Pg. 557  
" 209 " 560  
" 218 " 70



GRAPHIC SCALE IN FEET

East Line Lot 23, 1st Qtr., T9N, R6W, of Berlin  
Twp., Hol. Co., Ohio, & Approximate E. C.R. 201  
154.20' + 154.20' + 165' = 473.40' P.B. 5 Pg. 133 (1972)  
154.57' + 153.97' + 164.97' = 473.51' Meas. (1991)

This .7128 acre parcel is approved for residential wastewater treatment.

Sanitarian  
Date 11/4/91

SPLIT APPROVED # 910165

174241

INDEXED

REC'D. NOV 08 1991  
AT 3:24 O'CLOCK pm  
RECORDED NOV 12 1991  
Plat VOL 12 PG. 789  
Holmes Co. Ohio Fee: 5.00  
Mary Ellen Sanst Recorder  
Deed vol 253 pg 403 Max



Lot 23  
S.E. corner Lot 23  
Lots 3 Lot 2  
4th Qtr., T9N, R6W

PLAT OF A SURVEY FOR  
JOHN A. YODER ETUX  
Grantor  
Known as part of Lot 23, 1st  
Qtr., T9N, R6W, of Berlin  
Twp., Hol. Co., Ohio  
Robert L. Kasner P.S. 5193  
P.E. 28820  
10/16/91

PLAT APPROVED 11/8/91 B