

WALNUT CREEK TOWNSHIP
N.E. & S.E. QTRS. SECTION 5
T. 9N ; R. 4W
HOLMES COUNTY, OHIO

173165



SCALE: 1" = 200'

- IRON PIN FOUND
- 5/8" RE BAR WITH I.D. CAP SET
I.D. CAP MARKED "BAKER 6938"

REFERENCES:

PLAT VOL. 6 PAGE 62
DEED VOL. 243 PAGE 925
PLAT VOL. 6 PAGE 63
PLAT VOL. 6 PAGE 10
BEARINGS FROM DEED VOL. 243
PAGE 925

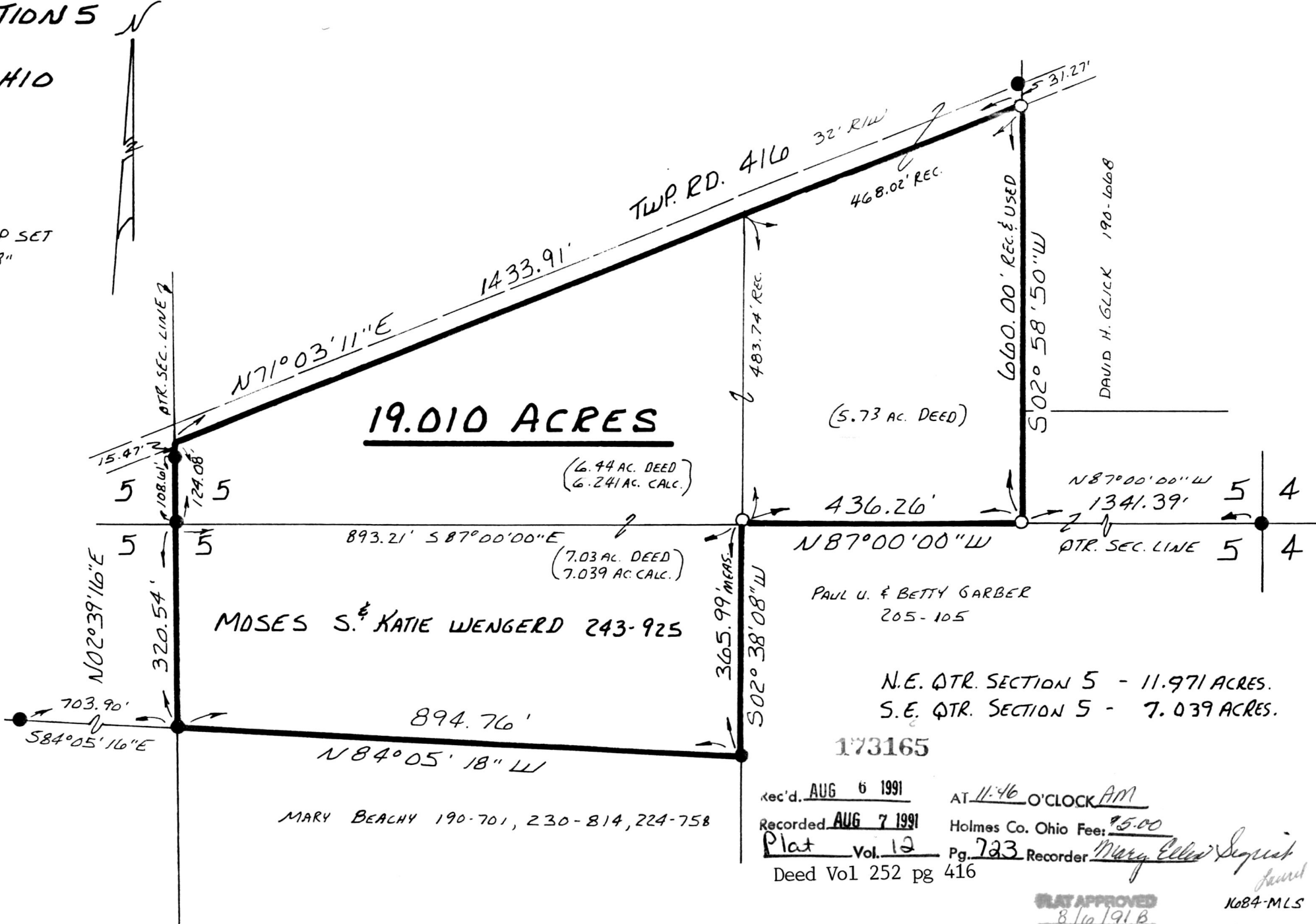


I CERTIFY THIS SURVEY TO BE CORRECT
TO THE BEST OF MY KNOWLEDGE.

Donald C. Baker

DONALD C. BAKER P.S. 6938
4321 T.R. 252
GLENMONT, OHIO 44628

JULY 20 11 991



19.010 ACRES

MOSES S. & KATIE WENGERD 243-925

PAUL U. & BETTY GARBER
205-105

N.E. QTR. SECTION 5 - 11.971 ACRES.
S.E. QTR. SECTION 5 - 7.039 ACRES.

173165

MARY BEACHY 190-701, 230-814, 224-758

Rec'd. AUG 6 1991

AT 11:46 O'CLOCK AM

Recorded AUG 7 1991

Holmes Co. Ohio Fee: \$5.00

Plat Vol. 12

Pg. 723

Recorder *Mary Ellen Seigrist*

Deed Vol 252 pg 416

PLAT APPROVED
8/10/91 B

No84-MLS