

172679

Stone at S.W. corner
S.E. 1/4 Frac'l Sec. 18,
and at N.W. corner
N.E. 1/4 Frac'l Sec. 23,
T8N, R6W of Mechanic
Twp. Hol. Co., Ohio

Stone referred in Vol. 131
Pg. 75, Vol. 151 Pg. 349, Vol. 186
Pg. 351, Vol. 223 Pg. 370, and
Vol. 227 Pg. 637 as being
at the S.E. corner of
20 acre tract

Joas D & Lizzie
Marie Miller Spike Fd
Vol. 223 Pg. 378 in C.R. 59

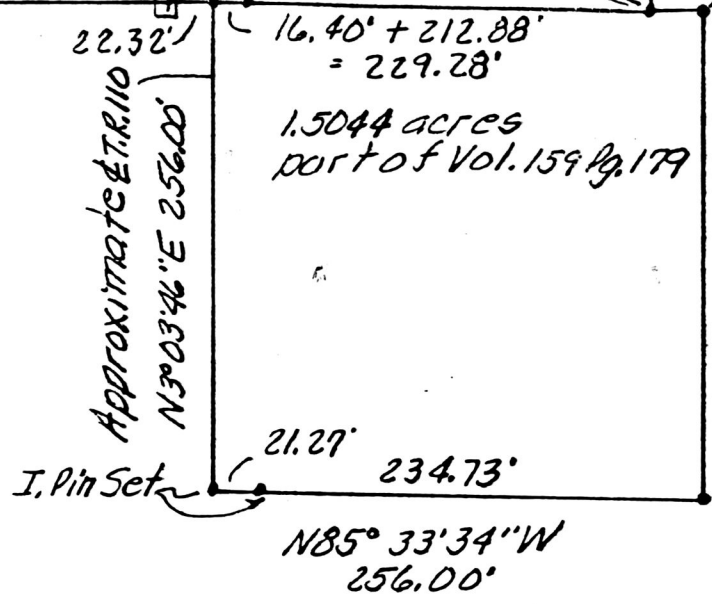
N2°00'00"E 38.86'
588°00'00"E 26.72'

586°42'36"E 940.24'
N.E. 1/4 Frac'l Sec. 23,
T8N, R6W of Mechanic
Twp., Hol. Co., Ohio

S85°33'34"E
251.60'

I. Pin Set I.P. Fd

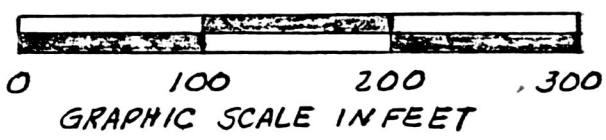
I. Pin set



Homer J & Nadine
Lowe
Vol. 159 Pg. 179

Lot 4, 3rd 01/1, T8N, R6W
NORTH

This 1.5044 acre parcel is not approved
for any use that generates wastewater.
Savitarian
APPROVED
9/10/08
Date 6/27/08



172679



PLAT OF A SURVEY FOR
MECHANIC TOWNSHIP
TRUSTEES
Grantees
Known as part of the N.E. 1/4
of Fractional Sec. 23, T8N
R6W of Mechanic Twp, Hol.
Co., Ohio.

Robert L. Kasner P.S. 5193
P.E. 28820
314191

Rec'd. 6-27-1991 AT 3:31 O'CLOCK PM
Recorded 6-28-1991 Holmes Co. Ohio Fee: \$5.00
Plat Vol. 12 Pg. 690 Recorder Mary Ellen Seigrist
Evelyn McVay

PLAT APPROVED
6/27/08