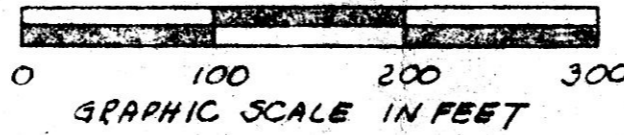




Robert L. Kasner P.E. 28820  
P.S. 5193



NORTH

N. line Lot 35  
Found no mark to absolutely identify crnr.

406.12' + 346.49' = 752.59'  
752.59' + 734.6' (no infringement)  
Used straight line from 3rd stone to found IP for line.

IP(F)

44.84' + 406.12' = 450.96'  
N 30° 27' 47" E

V162 P191 calls for stone, searched on 2 occasions, could not find.

Stone

44.84' + 214.80' = 259.64'  
N 32° 11' 18" E 214.80'

V162 P191 #2 15P144  
256.74

Stone

365.53' + 214.80' = 580.33'  
3.5P (577.5' SR 4 P 206 5/13/1902  
N 90° 0' 0" E 365.53'

V162 P191 #1 22P5L (366.3')

625.17' + 214.80' = 840.00'  
366.3' + 256.74

Granite stone at S.W. crnr Lot 35 1st Qtr. T9N, R7W, Hardy Twp, Hol. Co., Ohio.

586° 50' 41" E 880.86' Lot line to 2 IP(F)  
V176 P143 gives 888' = 880.86'  
+ 7.14  
888.00'

IP(S)

IP(S)

7.14'

46.96'

104.04'

46.96'

751.00' V176 P143 held.

46.03

32.96'

86.38'

558° 39' 32" W

IP(S)

IP(S)

IP(S)

IP(S)

IP(S)

IP(S)

IP(S)

IP(S)

IP(S)

IP(S)

IP(S)

IP(S)

IP(S)

IP(S)

IP(S)

IP(S)

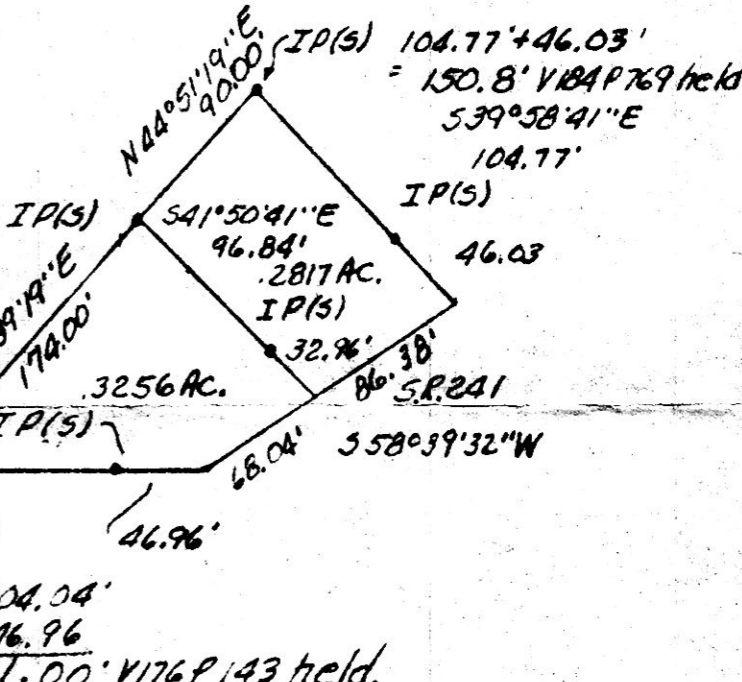
IP(S)

IP(S)

IP(S)

IP(S)

IP(S)



Notes:  
1. The 3 stones on the W. line do not make a straight line. The iron pin found on the W. line was in the fence line. A straight was struck from the 3rd stone to that pin and distances taken E'ly from that line.  
2. The angle where line leaves lot line is not exactly 90°.  
3. The S. line distance of Rice, N. line distance of McVicker, W. line distance of Rice, W. line distance of McVicker, S.W. & of Rice, N.W. & of Rice, and N.W. & of McVicker were held. The distance on S.R. 241 was thusly calculated. The acreages were thusly calculated. Weather description closed as recorded: Rice, E.O.C. 1:4228, McVicker, 1:76.

RICE VS. MCVICKER  
Known as part of Lot 35 1st Qtr. T9N, R7W of Hardy Twp. Hol. Co., O.

Robert L. Kasner P.S. 5193  
P.E. 28820  
172524

INDEXED

Deed Vol. 251 Page 801  
Rec'd JUN 18 1991 AT 11:10 O'CLOCK AM  
Recorded JUN 19 1991 Holmes Co. Ohio Fee \$12.00  
Pg. 683 Recorder [Signature] Dan  
Dist Vol. 12