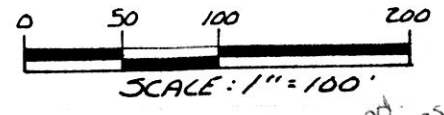


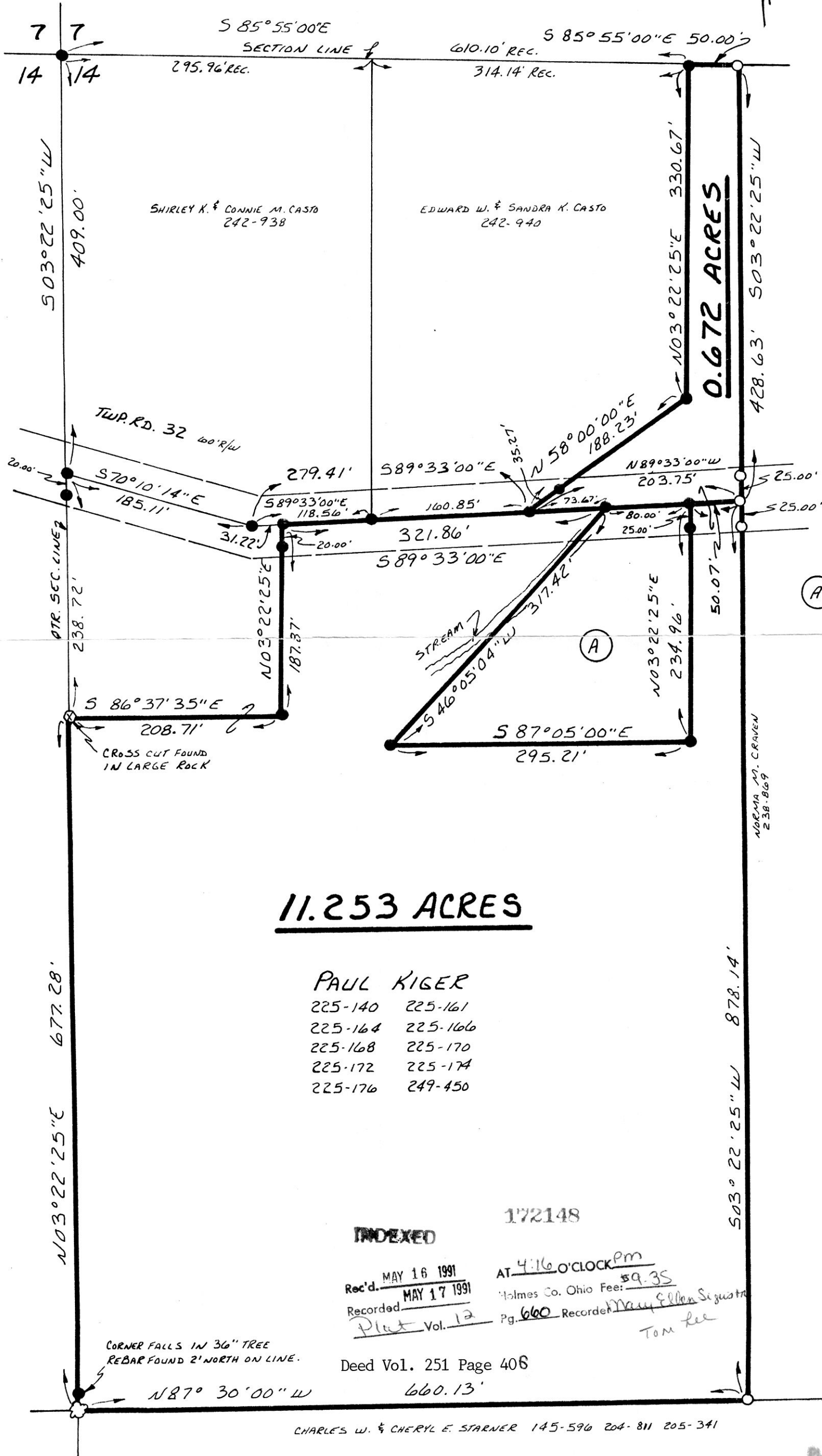
RICHLAND TOWNSHIP
N.E. QTR. SECTION 14
T-8N ; R-9W
HOLMES COUNTY, OHIO

This 0.672 acre parcel is not approved
for any use that generates wastewater.

[Signature]
Sanitarian **SPLIT**
APPROVED
910056
Date 5/8/91



- IRON PIN FOUND *pd. 29.35*
- 5/8" REBAR WITH I.D. CAP SET
I.D. CAP MARKED "BAKER 6938"

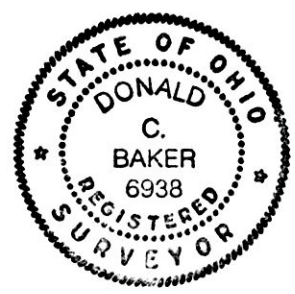


REFERENCES:
 PLAT VOL. 12 PAGE 186
 DEED VOL. 249 PAGE 450
 PLAT VOL. 12 PAGE 341
 PLAT VOL. 13 PAGE 49
 BEARINGS FROM PLAT VOL 12
 PAGE 186

(A) - MAXWELL M. WHITLOCK,
 ROBERT G. CONDREN, JR. &
 PHIL L. HAWKINS 243-505

11.253 ACRES

PAUL KIGER
 225-140 225-161
 225-164 225-166
 225-168 225-170
 225-172 225-174
 225-176 249-450



I CERTIFY THIS SURVEY TO BE
 CORRECT TO THE BEST OF MY
 KNOWLEDGE.
Donald C. Baker
 DONALD C. BAKER P.S. 6938
 4321 T.R. 252
 GLENMONT, OHIO 44628

INDEXED
 172148
 Rec'd. MAY 16 1991 AT 4:16 O'CLOCK PM
 Recorded MAY 17 1991 Holmes Co. Ohio Fee: \$9.35
 Plat Vol. 12 Pg. 660 Recorder *Mary Ellen Sigwalt*
Tom Lee

Deed Vol. 251 Page 406
 660.13'

APRIL 23, 1991

CHARLES W. & CHERYL E. STARNER 145-596 204-811 205-341

PLAT APPROVED
 5/16/91 B

1660-MLS