

# SURVEY PLAT

SW QUARTER of SECTION 28  
T-18-N, R-14-W  
Ripley Township  
HOLMES COUNTY, OHIO

Ronald J. Reynolds  
Deed Vol. 167, Pg. 55  
1.6 AC.

Ronald J. & Loreta Kay Reynolds  
Deed Vol. 208, Pg. 830  
4.423 AC.

Grantor: Avonell Reynolds  
Deed Vol. 198, Pg. 654 &  
Deed Vol. 185, Pg. 411

111.353 AC.  
- 1.250 AC.  
110.103 AC.

1.250 AC.

1.773 AC.

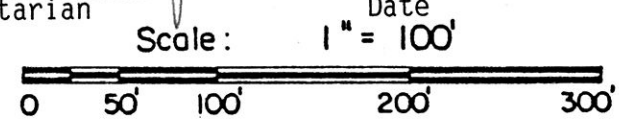
4.024 AC.  
- 1.773 AC.  
2.251 AC.

Marsha Louise Reynolds  
Deed Vol. 240, Pg. 757  
5.13 AC.

SPLIT  
APPROVED  
# 910027

This 1.773 acre plat is approved  
for any use that generates wastewater.

*Ronald G. Rudolph*  
Sanitarian Date 17/91

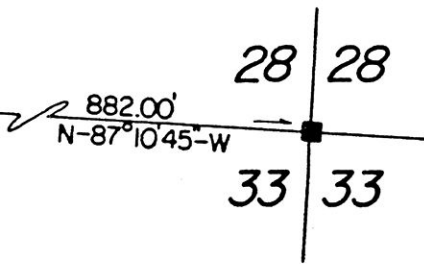


I Certify This Survey And Plat To Be  
Correct To The Best Of My Knowledge.

Date 10-06-90 *Ronald G. Rudolph*  
Ronald G. Rudolph P.S. No. 6449  
R.G. RUDOLPH SURVEYING, INC.  
405 W. Liberty St.  
Wooster, Ohio 44691

Job No. 4517

- ▲ RR Spike Fd. In Roadway
- Stone Corner
- Iron Pipe or Pin Fd.
- △ RR Spike Set In Roadway
- 5/8" x 30" Rebar With Yellow Plastic Cap  
Marked RUDOLPH Set 6449



PLAT APPROVED  
3/22/91 B

REC'D. MAR 22 1991  
AT 10:42 O'CLOCK AM  
RECORDED MAR 25 1991  
P. Post VOL. 12 PG. 627  
Holmes Co. Ohio Fee: 9.35  
*Jolly Miller* Recorder