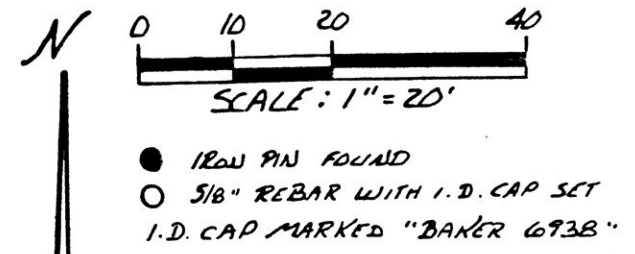
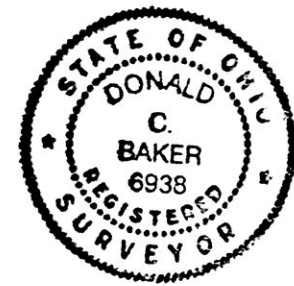
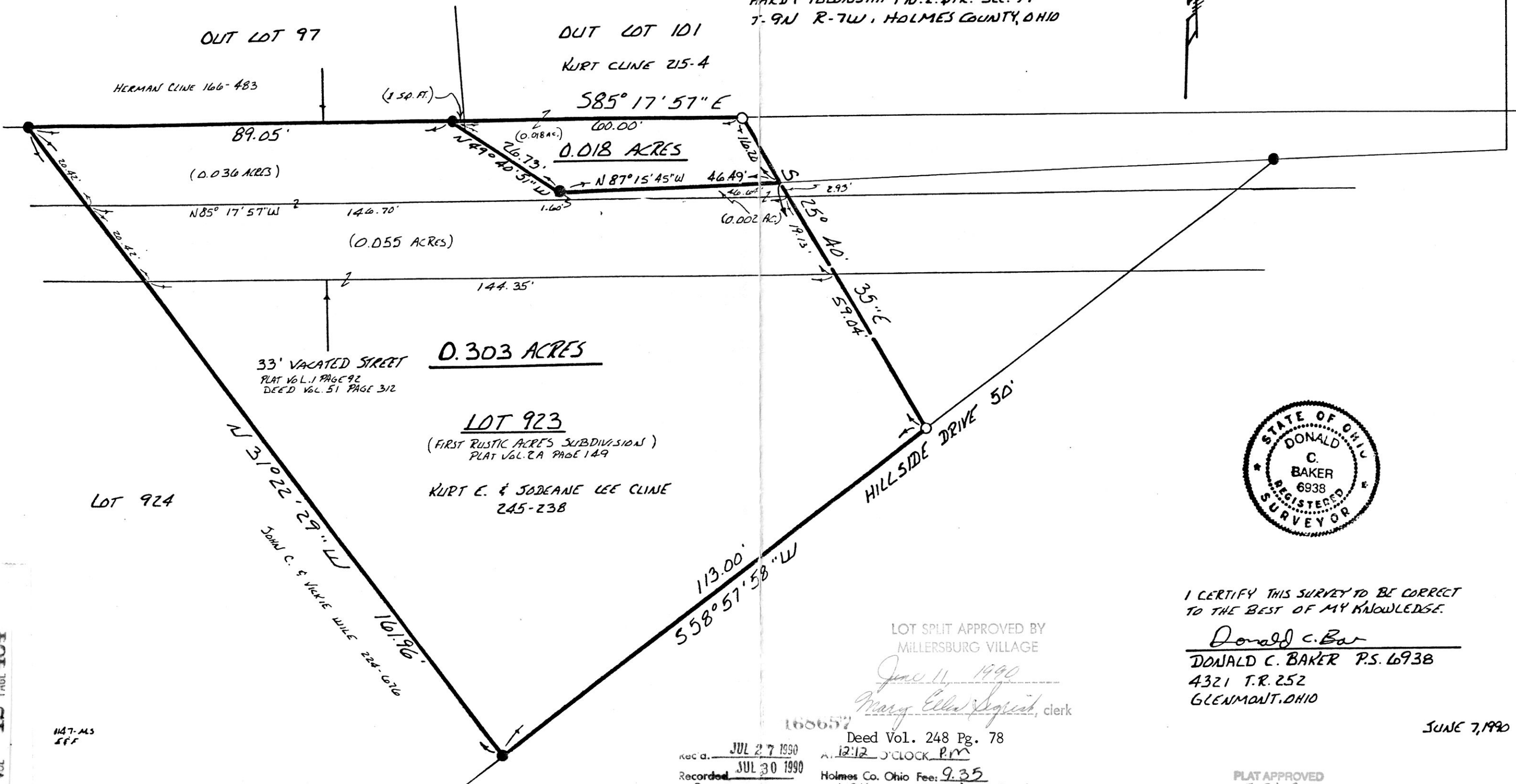


REFERENCES:
 PLAT VOL. 9 PAGE 111
 PLAT VOL. 1 PAGE 92
 DEED VOL. 51 PAGE 312
 BEARINGS FROM PLAT VOL. 2A
 PAGE 149

168657
VILLAGE OF MILLERSBURG
 PART OF OUT LOT 101
 PART OF LOT 923 OF
 FIRST RUSTIC ACRES SUBDIVISION (P.V. 2A-149)
 PART OF VACATED STREET (P.V. 1-92)



HARDY TOWNSHIP, N.E. QTR. SEC. 19
 T-9N R-7W, HOLMES COUNTY, OHIO



I CERTIFY THIS SURVEY TO BE CORRECT
 TO THE BEST OF MY KNOWLEDGE.

Donald C. Baker
 DONALD C. BAKER P.S. 6938
 4321 T.R. 252
 GLENMONT, OHIO

JUNE 7, 1990

LOT SPLIT APPROVED BY
 MILLERSBURG VILLAGE

June 11, 1990
 Mary Ellen Sigurd, clerk

168657
 Deed Vol. 248 Pg. 78
 rec'd. JUL 27 1990
 Recorded JUL 30 1990
 Plat Vol. 12 Pg. 484
 HOLMES CO. OHIO FEE: 9.35
 Recorder Richard Honen
 Dan M.

PLAT APPROVED
 7-24-90

VOL 12 PAGE 484

1147-MS
 EFF