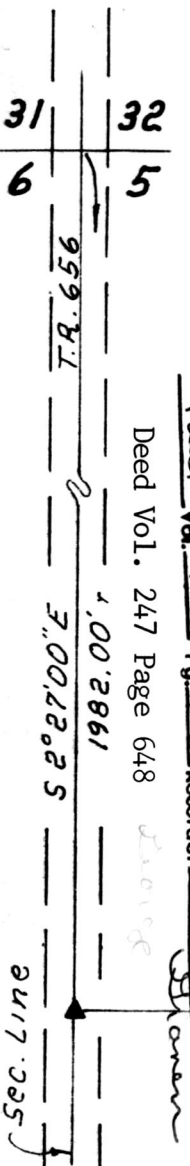
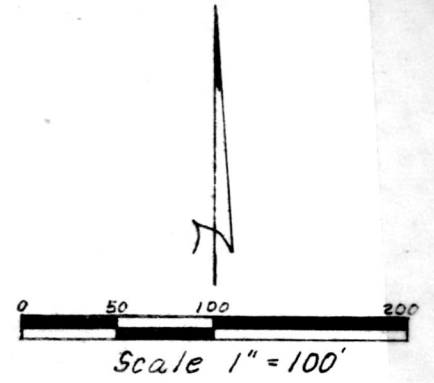


# PAINT TOWNSHIP HOLMES COUNTY, OHIO N.W. QTR., SEC. 5, T-14N, R-11W



Grantor:  
Joe J.C. & Mattie J. Miller, Deed Vol. 187, Pg. 261

Bearings From P.V. 6, Pg. 31

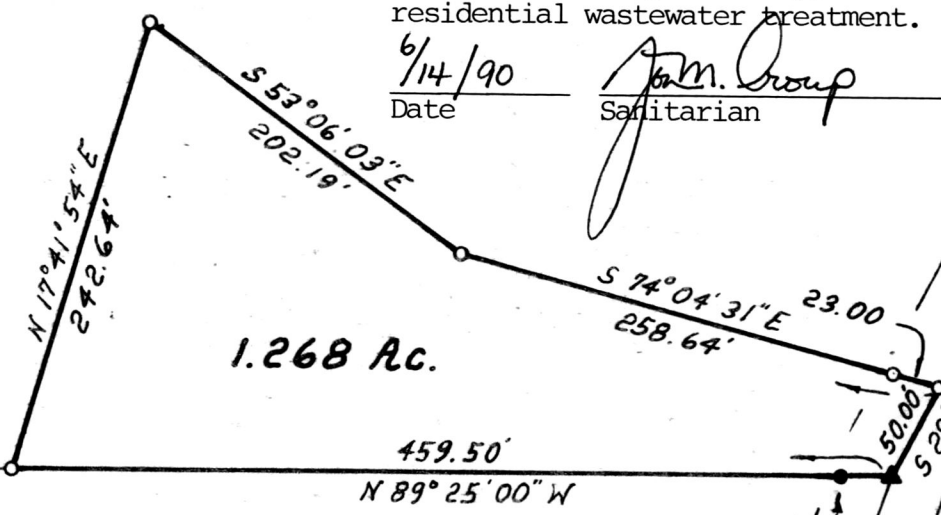
References:  
Plat Vol. 6, Pg. 31  
Plat Vol. 10, Pg. 285

- ▲ R.R. Spike Found
- Iron Pin Found
- Iron Pin Set - 1/8" Rebar With Yellow Cap Marked "LONG 7115"

**SPLIT  
APPROVED**  
# 9000 B2

This 1.268 acre plat is approved for residential wastewater treatment.

6/14/90  
Date John M. Group  
Sanitarian



John J.C. & Mattie A. Miller  
Deed Vol. 131, Pg. 45 & Vol. 173, Pg. 310

Offset Pin Found  
25.62' W. of Cor.  
0.53' S. of Line

Ammon J. & Lydia Miller  
Vol. 229, Pg. 764 & Vol. 169, Pg. 114



PLAT APPROVED  
6/19/90 B

Rec'd. JUN 22 1990  
Recorded JUN 25 1990  
Deed Vol. 12  
Pg. 468 Recorder  
AT 3:21 O'CLOCK P.M.  
Holmes Co. Ohio Fee \$5.00  
Rushmore

I Certify This Survey To Be Correct  
To The Best Of My Knowledge.

Donald G. Long May 11, 1989  
Donald G. Long P.S. 7115  
LONG SURVEYING INC.  
13301 T.R. 503  
Big Prairie, Ohio 44611