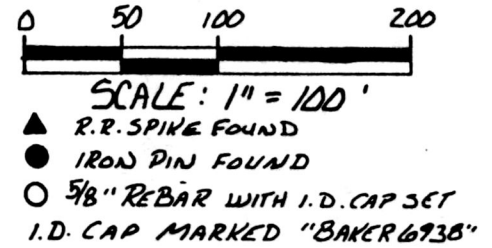


PRAIRIE TOWNSHIP
 S.W. QTR. SECTION 16
 TWP. 13N RANGE 13W
 HOLMES COUNTY, OHIO

Two plats have the
 same Plat Vol 12
 Page 449. See DV 247
 Page 480 Saltcreek
 Twp. T-15 R-12 Sec 31



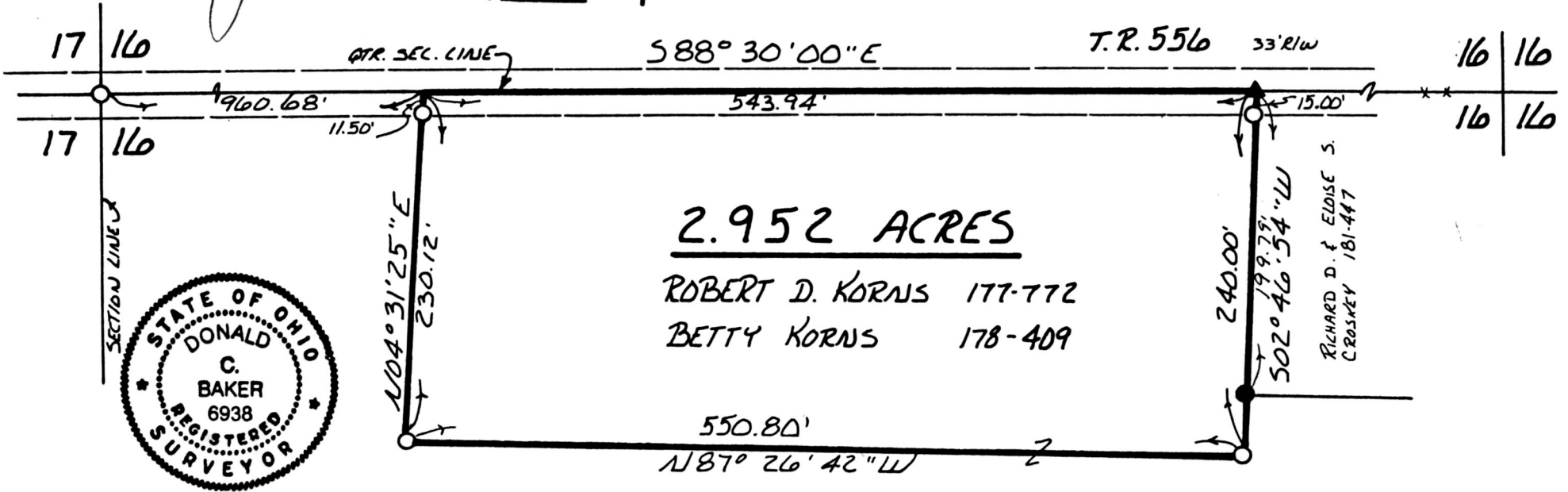
REFERENCES:
 PLAT VOL. 3 PAGE 58
 BEARINGS FROM
 PLAT VOL. 5 PAGE 149

This 2.952 acre plat is approved for
 residential wastewater treatment.

6/5/90
 Date

James [Signature]
 Sanitarian

SPLIT
 APPROVED
 # 900071



2.952 ACRES

ROBERT D. KORNS 177-772
 BETTY KORNS 178-409



I CERTIFY THIS SURVEY TO BE CORRECT
 TO THE BEST OF MY KNOWLEDGE.

Donald C. Baker
 DONALD C. BAKER P.S. 6938
 4321 T.R. 252
 GLENMONT, OHIO

APRIL 25, 1990

1129-MS
 PLAT APPROVED
 6/5/90

168024

VOL 12 PAGE 449

PB 449 A