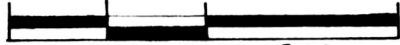


PRAIRIE TOWNSHIP
N.E. QTR. SECTION 3
TWP. 13N; RANGE 13W
HOLMES COUNTY, OHIO

0 100 200 400



SCALE: 1" = 200'

- STONE FOUND
- IRON PIN FOUND
- △ R.R. SPIKE SET
- 5/8" REBAR WITH I.D. CAP SET
I.D. CAP MARKED "BAKER 6938"

REFERENCES

PLAT VOL. 5 PAGE 150
SURVEY BY W.M. BURKEY DATED 3-22-69
DEEDS AS SHOWN
BEARINGS FROM PLAT VOL. 7 PAGE 515



I CERTIFY THIS SURVEY TO BE CORRECT
TO THE BEST OF MY KNOWLEDGE.

Donald C. Baker
DONALD C. BAKER P.S. 6938
4321 T.R. 252
GLENMONT, OHIO

APRIL 6, 1990

1092-MS

Deed Vol. 247 Page 305

167908

CURVE DATA

Δ - 12° 35' 28"
R - 3558.80'
T - 392.62'
ARC LENGTH - 782.07'
CH. DIST. - 780.50'
CH. BRG. - N51° 02' 09" E

GRANTORS:

R. GENE & SUE E. SMITH
219-364
219-366

SPLIT
APPROVED
900049

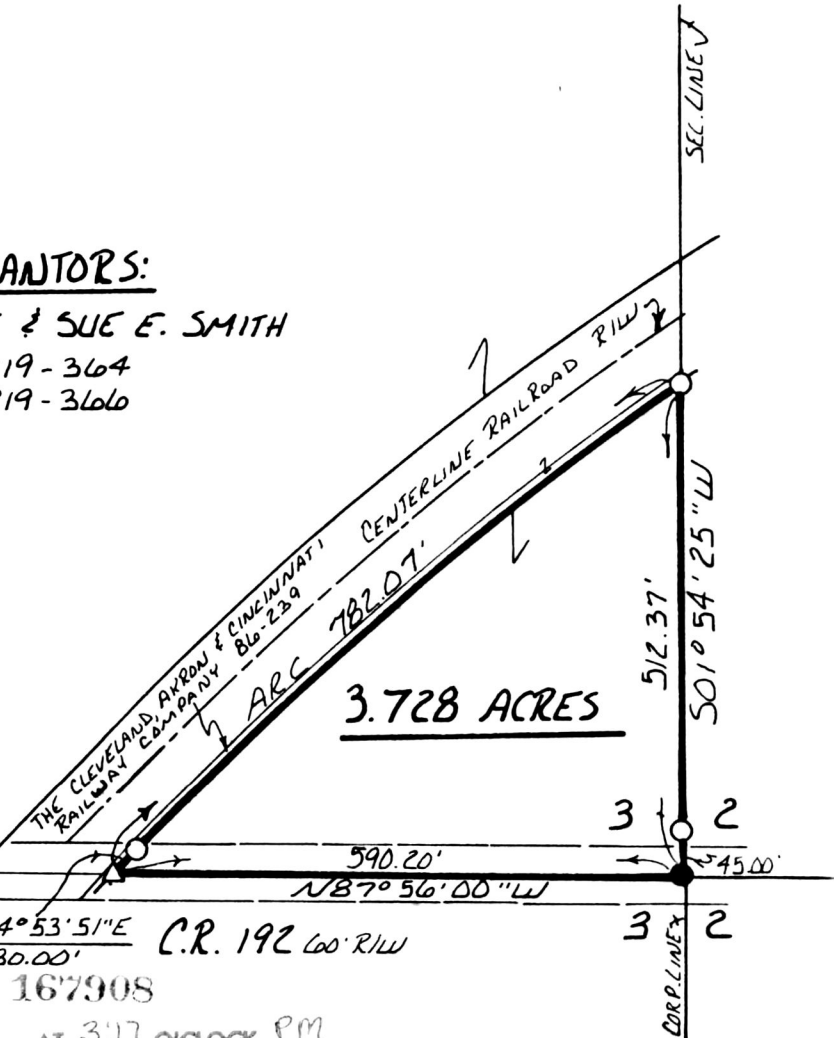
(3.728 Ac.)

This plat not approved for any use
that generates wastewater.

John Group 5/2/90
Sanitarian Date

QTR. SEC. LINE 7
CORP. LINE 7

STONE FOUND 33'
SOUTH OF QTR. SEC.
LINE, ON THE N.W.
CORNER OF LOT 102.



167908

Rec'd MAY 25 1990

AT 3:17 O'CLOCK PM

Recorded MAY 29 1990

Holmes Co. Ohio Fee: 5.00

Plat Vol. 12

Pg. 439 Recorder Richard Hoover

FILED 5/27/90