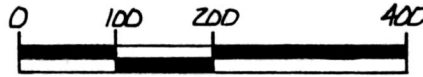


SPLIT APPROVED # 900051

RIPLEY TOWNSHIP N.E. QTR. SEC. 7 T-17N R-14W HOLMES COUNTY, OHIO



SCALE: 1" = 200'

- IRON PIN FOUND
- 5/8" REBAR WITH I.D. CAP SET
I.D. CAP MARKED "BAKER 6938"

REFERENCES:

PLAT VOL. 7 PAGE 639
DEED VOL. 190 PAGE 855

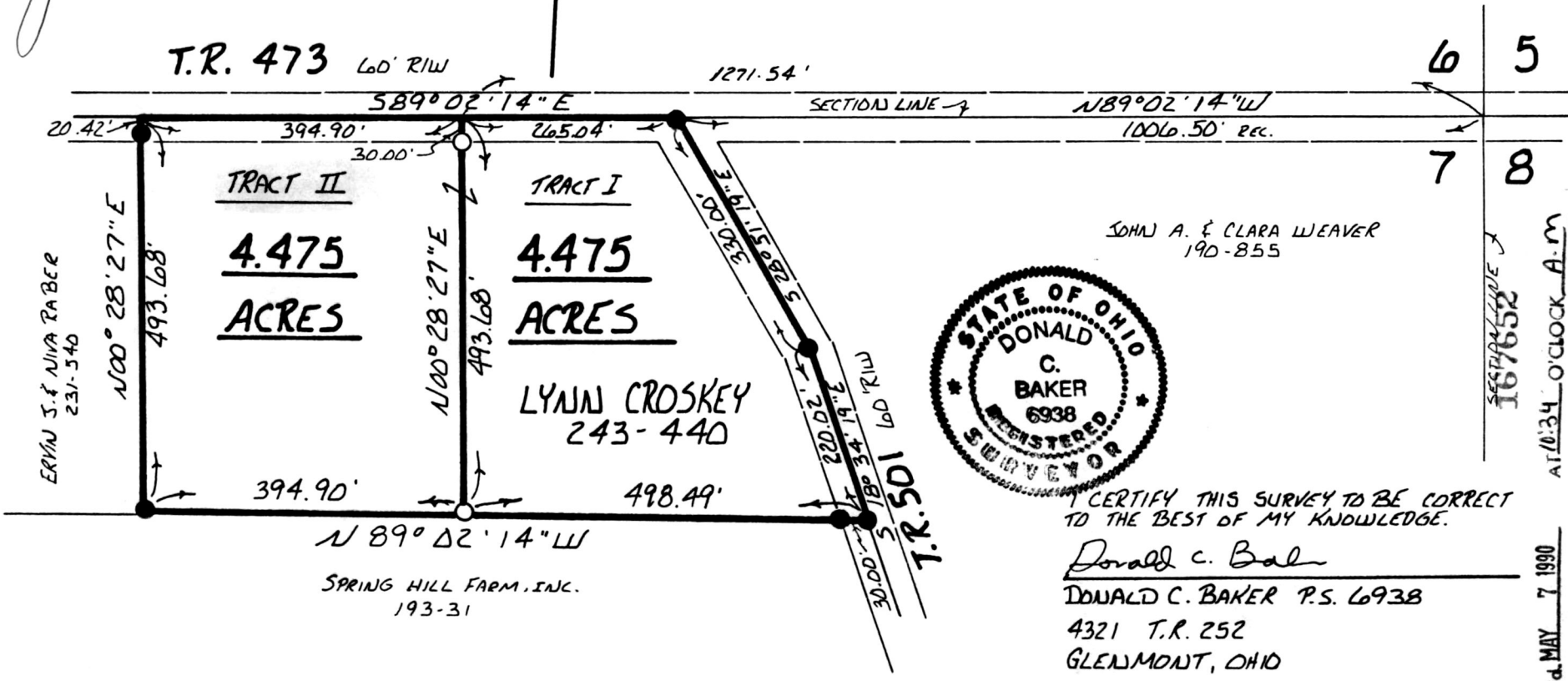
BEARINGS FROM PLAT VOL. 9
PAGE 177.

(TRACT II 4.475 Ac.)

~~This plat not approved for any use that generates wastewater.~~

John Group 5/2/90
Sanitarian Date

167652



Deed Vol. 247 Page 100

AT 0:34 O'CLOCK A.M.

Holmes Co. Ohio Fee: 5.00

Plat Vol 12

REC'D. MAY 7 1990

Recorded MAY 8 1990

Plat Vol 12

APRIL 9, 1990

1099-MS

Jacob E. & Ada A. Byler

PLAT APPROVED
5/7/90 B