

Qtr. Sec. Line 7

S 87°09'45"E  
1344.30'

Ad \$5.00

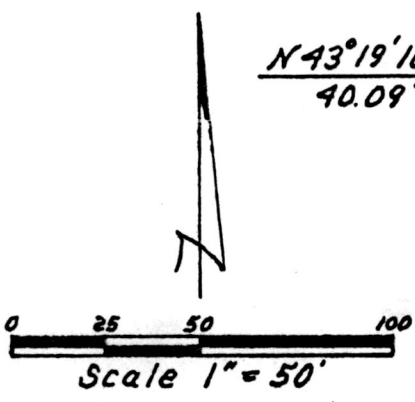
# SALT CREEK TOWNSHIP HOLMES COUNTY, OHIO S.E. QTR., SEC. 1, T-14N, R-12W

This 1.082 Ac. plat is approved for residential wastewater.

Dennis J. Murray  
Sanitarian

1/13/89  
Date

Grantor:  
Emanuel H. & Mary Schlabach  
Deed Vol. 227 Pg. 757



- Stone Found
- ▲ R.R. Spk. Found
- Iron Pin Found
- Iron Pin Set (1/2" Re-Bar With Cap "LONG 7115")  
Re-Bar's In Road Have No Caps.

References:  
Plat Vol. 10 Pg. 320  
Plat Vol. 8 Pg 762

Bearings Based On  
Plat Vol. 10 Pg 320  
166602

1.082 AC.

SPLIT  
APPROVED  
# 900011

Rec'd. FEB 01 1990  
Recorded FEB 02 1990  
Plat Vol. 12  
Deed Vol. 246 Pg. 101

AT 11:46 O'CLOCK AM  
Holmes Co. Ohio Fees \$5.00  
Pg. 366  
George R. Choudhary



T.R. 617

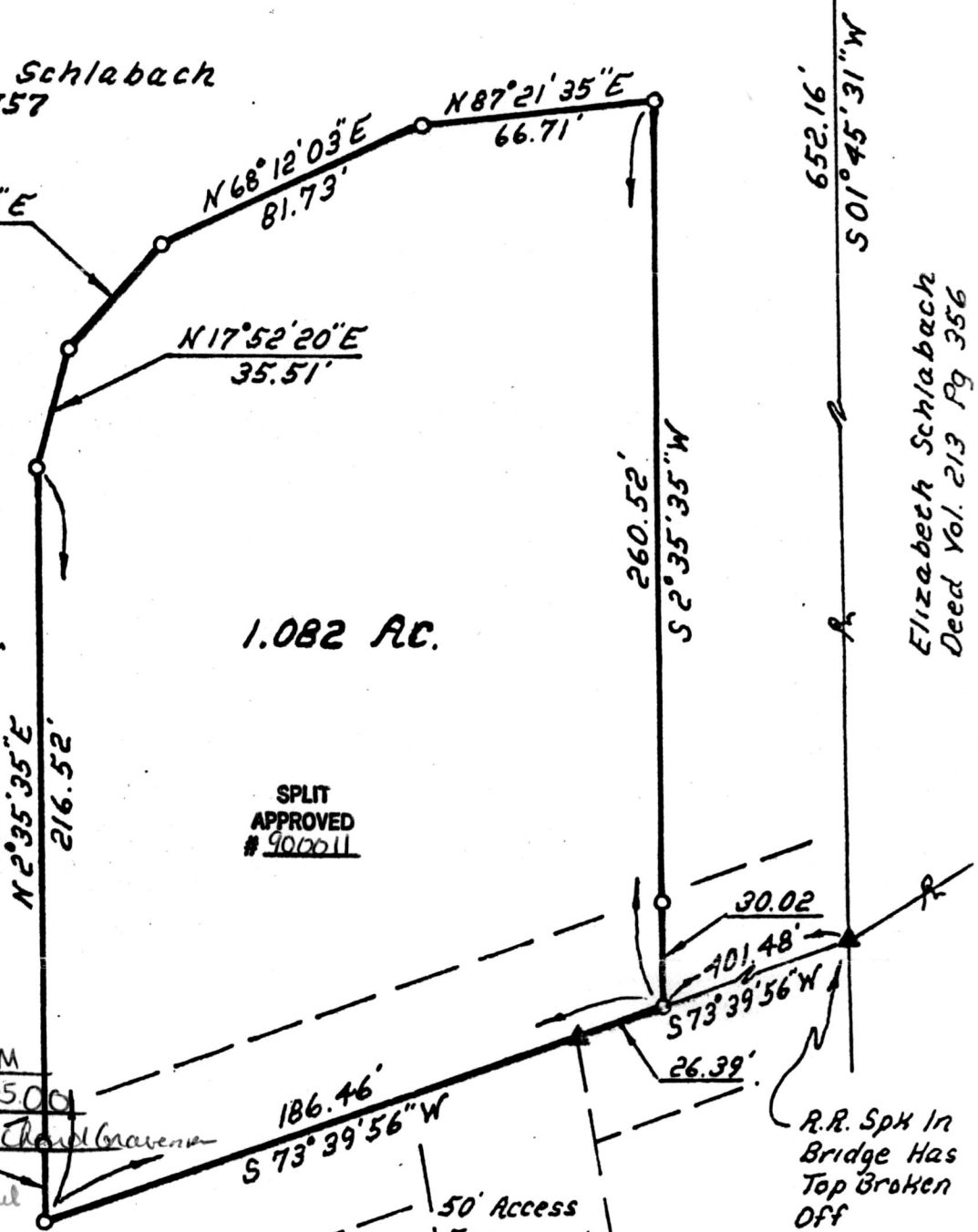
I Certify This Survey To Be Correct To The Best Of My Knowledge.

Donald G. Long Sept - 4 - 1987

Donald G. Long P.S. 7115  
13301 T.R. 503  
Big Prairie Ohio 44611

APPROVED BY  
TAX MAP OFFICE

Date 2/1/90 B



Elizabeth Schlabach  
Deed Vol. 213 Pg 356