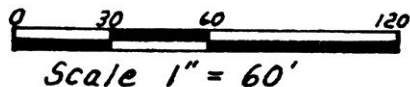


VILLAGE OF MILLERSBURG
 HOLMES COUNTY, OHIO
 LOTS 352 & 353
 LEWIS MAYER ADDITION

165687

Prepared For Steve & Lee Ann Buss



- Iron Pin Found
- Iron Pin Set - 5/8" Rebar With Yellow Cap Marked "7115" LONG

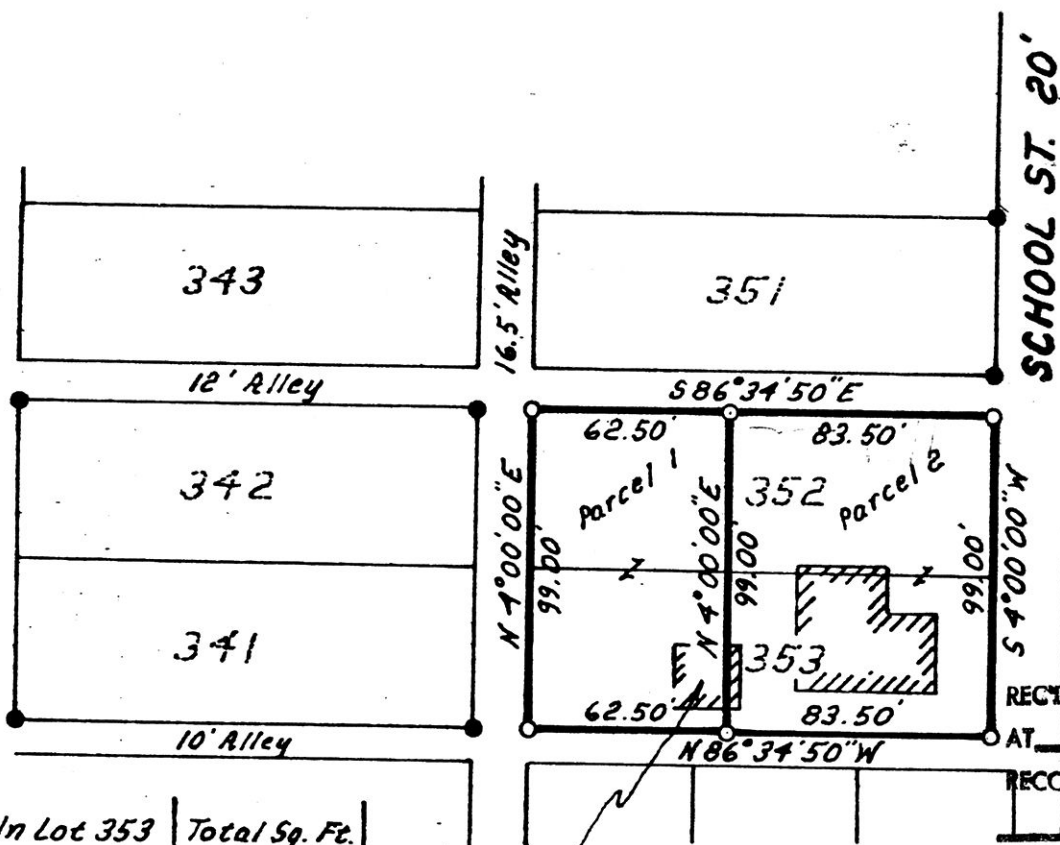
Bearings Based On Survey Of Lots 341 & 342 By Wm. Long Dated 2/2/87

References:

Plat Vol. 1 Page 33
 Survey Of Lots 341 & 342
 By Wm. Long Dtd 2/2/87

Acreage:

	Total	In Lot 352	In Lot 353	Total Sq. Ft.
Parcel 1	0.142 Ac.	0.071 Ac.	0.071 Ac.	6187.23 ft ²
Parcel 2	0.190 Ac.	0.095 Ac.	0.095 Ac.	8266.14 ft ²



West Edge Of Existing 2 Sty Frame Apartment Bldg Is 22.5' East Of New Property Line

165687

RECD NOV 01 1989
 AT 2:21 O'CLOCK PM
 RECORDED NOV 02 1989
 Plat VOL 12 PG. 320
 Holmes Co. Ohio Fee \$5.00
 Richard Grauer Recorder

20' x 20' Garage To Be Removed.

Deed Vol. 245 Page 204

I Certify This Survey To Be Correct To The Best Of My Knowledge.

Donald G. Long Feb. 1, 1988

Donald G. Long P.S. 7115
 LONG SURVEYING INC.
 13301 T.R. 503
 Big Prairie, Ohio, 44611



PAGE 320

Approved This ___ Day Of ___, 1988

Village Of Millersburg
 LOT SPLIT APPROVED BY
 MILLERSBURG VILLAGE

Oct. 9, 1989

Mary Ellen Sequist, Clerk