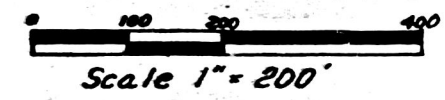


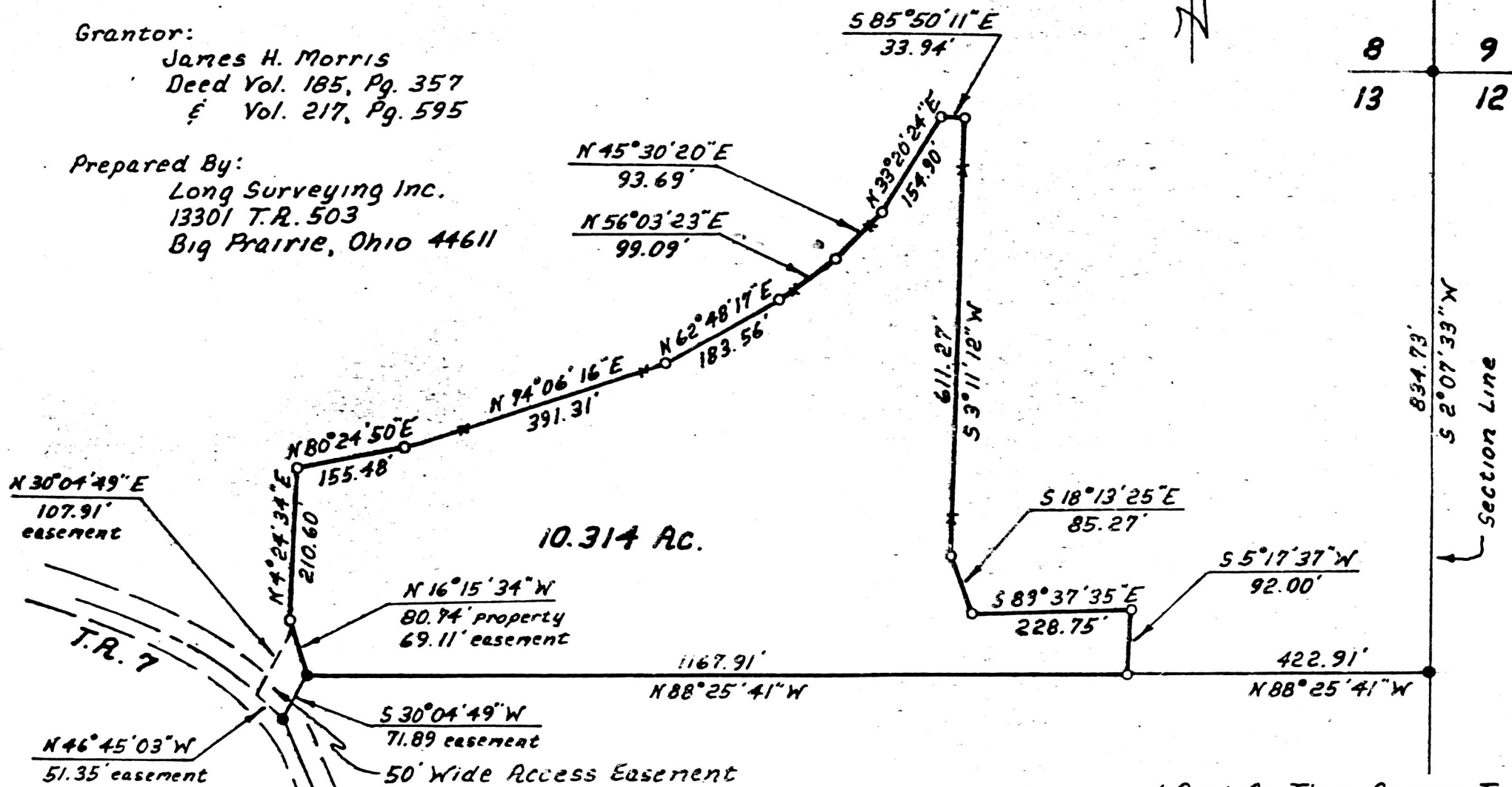
**RICHLAND TOWNSHIP
HOLMES COUNTY, OHIO
N.E. QTR., SEC. 13, T-8N, R-9W**

pd. 5.00
VOL 12 PAGE 290



Grantor:
James H. Morris
Deed Vol. 185, Pg. 357
E Vol. 217, Pg. 595

Prepared By:
Long Surveying Inc.
13301 T.R. 503
Big Prairie, Ohio 44611



8 9
13 12

- Iron Pin Found
- Iron Pin Set - 5/8" Rebar With Yellow Cap. Marked "LONG 7115"

Bearings Based On
Plat Vol. 13, Pg. 2

References:
Plat Vol. 13, Pg. 2
Plat Vol. 7, Pg. 79



I Certify This Survey To Be Correct
To The Best Of My Knowledge.

Donald G. Long July 25, 1989
Donald G. Long P.S. 7115

Rec'd SEP 18 1989
Recorded SEP 14 1989
Plat Vol. 290

165085 Lloyd L. & Carolyn J. Schlauch
Deed Vol. 239, Page 306
AT 9:02 O'CLOCK AM
Holmes Co. Ohio Fee \$5.00
Pg. 290 Recorder Richard Graczer Deed Vol. 244 Pg. 651