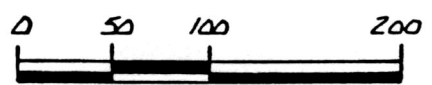


RICHLAND TOWNSHIP  
N.E. QTR. SECTION 14  
T-8N R-9W  
HOLMES COUNTY, OHIO

SURVEYED FOR M. WHITLOCK



SCALE: 1" = 100'

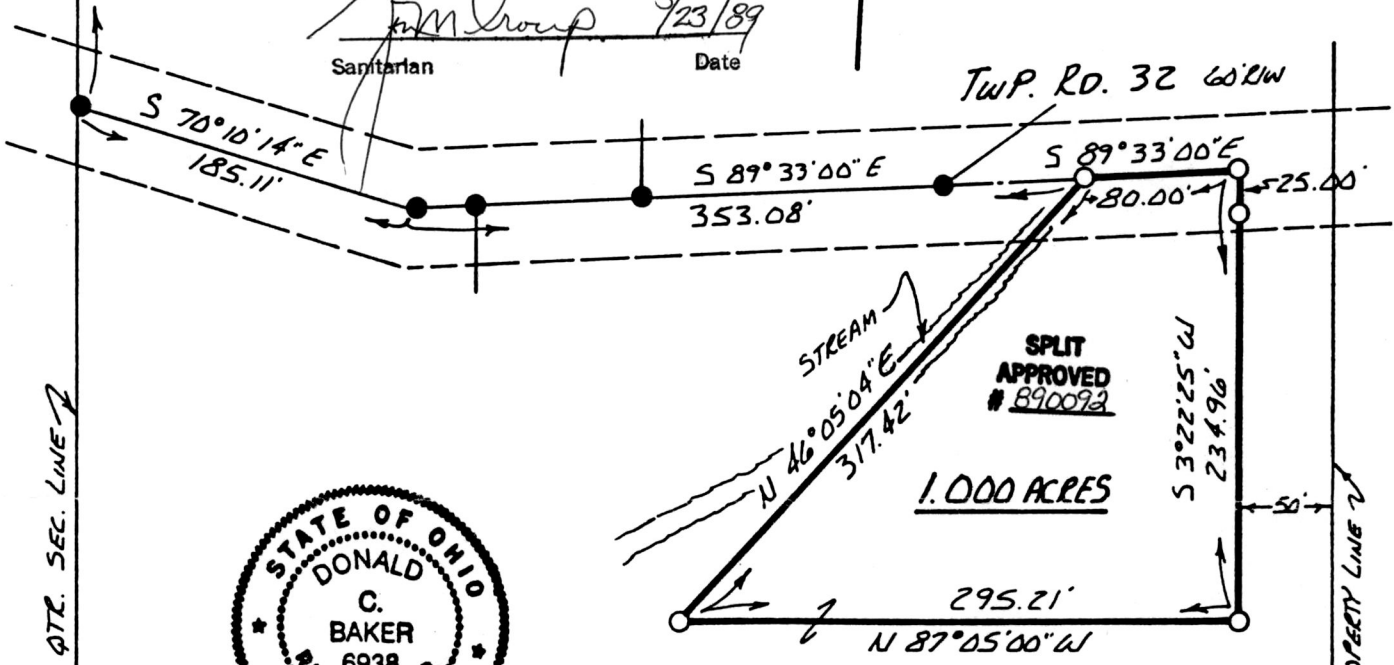
- IRON PIN FOUND
- 5/8" REBAR WITH I.D. CAP SET  
I.D. CAP MARKED "BAKER 6938"

REMARKS

BEARINGS FROM PLAT VOL. 13  
PAGE 47  
SURVEY BY D.C. BAKER  
DATED: FEB. 22, 1989

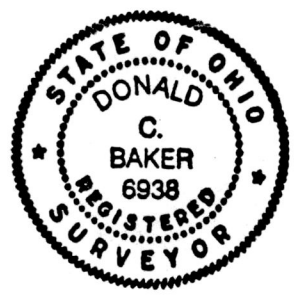
7 7  
14 14

M 52' 22" E S  
409.00'



(1.000 Ac.)  
This plat not approved for any use  
that generates wastewater.

*M. Group* 5/23/89  
Sanitarian Date



1.000 ACRES

SPLIT APPROVED # 890092

GRANTORS:

- ELDISE KENT 225-149, 225-158, 225-161
- PAUL KIGER 225-140, 225-161, 225-164, 225-166, 225-168, 225-170, 225-172, 225-174, 225-176

I CERTIFY THIS SURVEY TO BE CORRECT  
TO THE BEST OF MY KNOWLEDGE.

Donald C. Baker  
DONALD C. BAKER P.S. 6938  
4321 T.R. 252  
GLENMONT, OH.

Deed Vol. 243 Pg. 505

Rec'd. MAY 28 1989

AT 1:38 O'CLOCK PM

Recorded MAY 30 1989

Holmes Co. Ohio Fee \$5.00

MARCH 27, 1989

Plat Vol. 12

Pg. 234 Recorder: Richard Grawen

Label