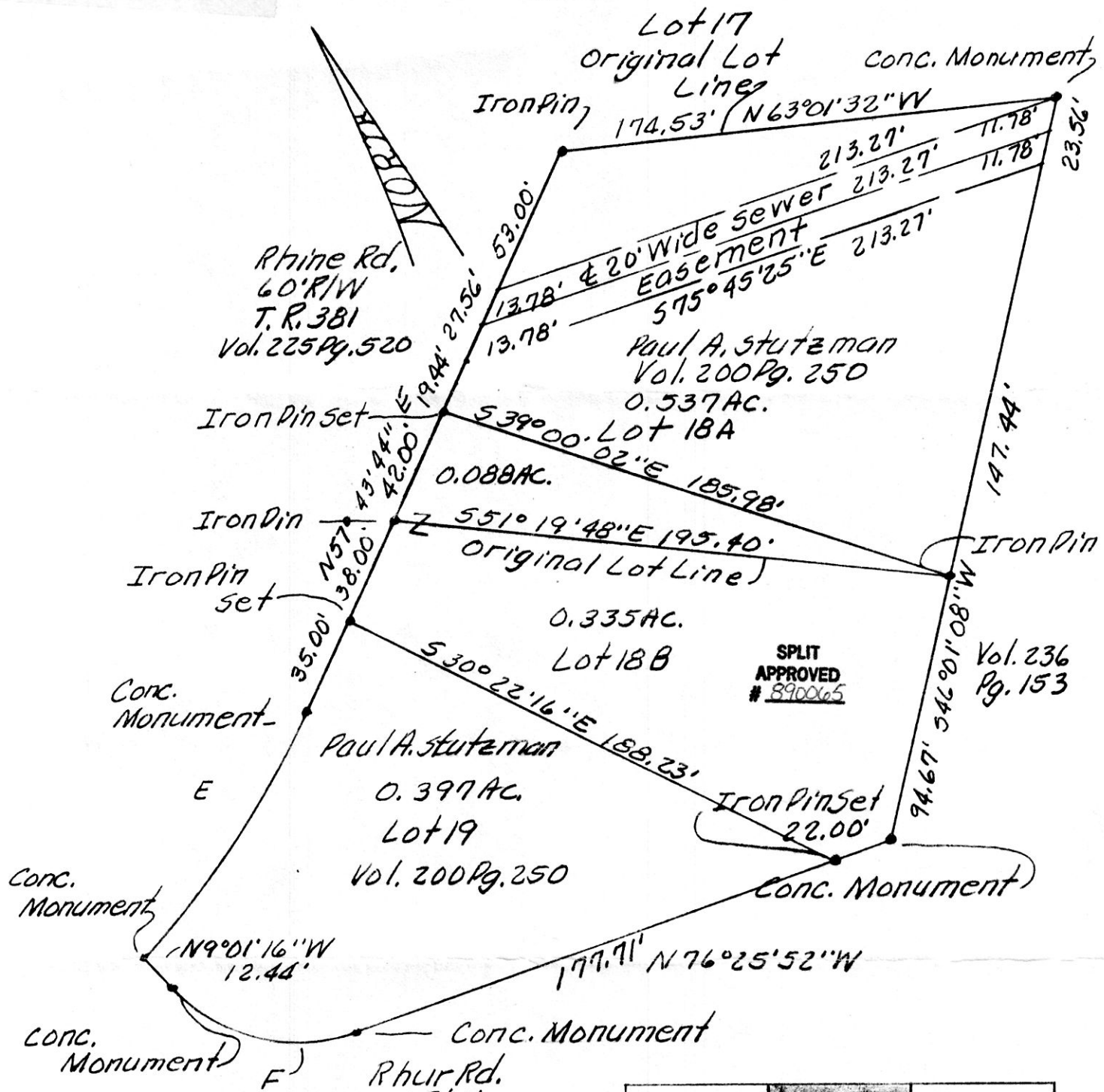
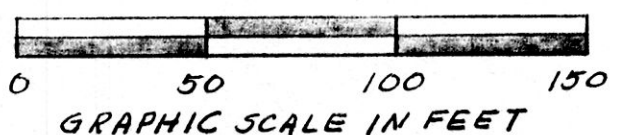


163702



Curve E  
 $\Delta = 18^{\circ}02'03''$   
 $D = 17^{\circ}21'44''$   
 $R = 330.00'$   
 $T = 52.37'$   
 $L = 103.87'$   
 $LC = 566^{\circ}45'56''W$   
 103.44'

Curve F  
 $\Delta = 67^{\circ}24'36''$   
 $D = 95^{\circ}34'21''$   
 $R = 59.95'$   
 $T = 39.99'$   
 $L = 70.53'$   
 $LC = N42^{\circ}43'34''W$   
 66.53'



(.423 Ac. = 0.088 + 0.335)

This plat not approved for any use that generates wastewater.

*J.M. Group* 5/2/89  
 Sanitarian Date

3RD STUTZMAN SUBDIVISION  
 P.B. 2A Pg 169  
 Known as part of Lot 21, 1st Q.T.,  
 T. 9N., R. 6W., of Berlin Twp., Hol. Co.,  
 Ohio  
 Robert L. Kasner P.S. 5193  
 P.E. 28820  
 10/24/88



This shall be considered as replatting of Lots 18 & 19  
 of 3rd Stutzman Subdivision as platted in P.B. 2A Pg. 169.  
 163702 Deed Vol. 243 Pg. 213