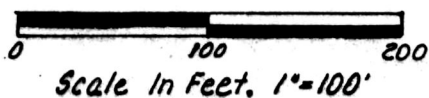


PAINT TOWNSHIP
HOLMES COUNTY, OHIO
NW QTR. SECTION 26, T-15N, R-11W

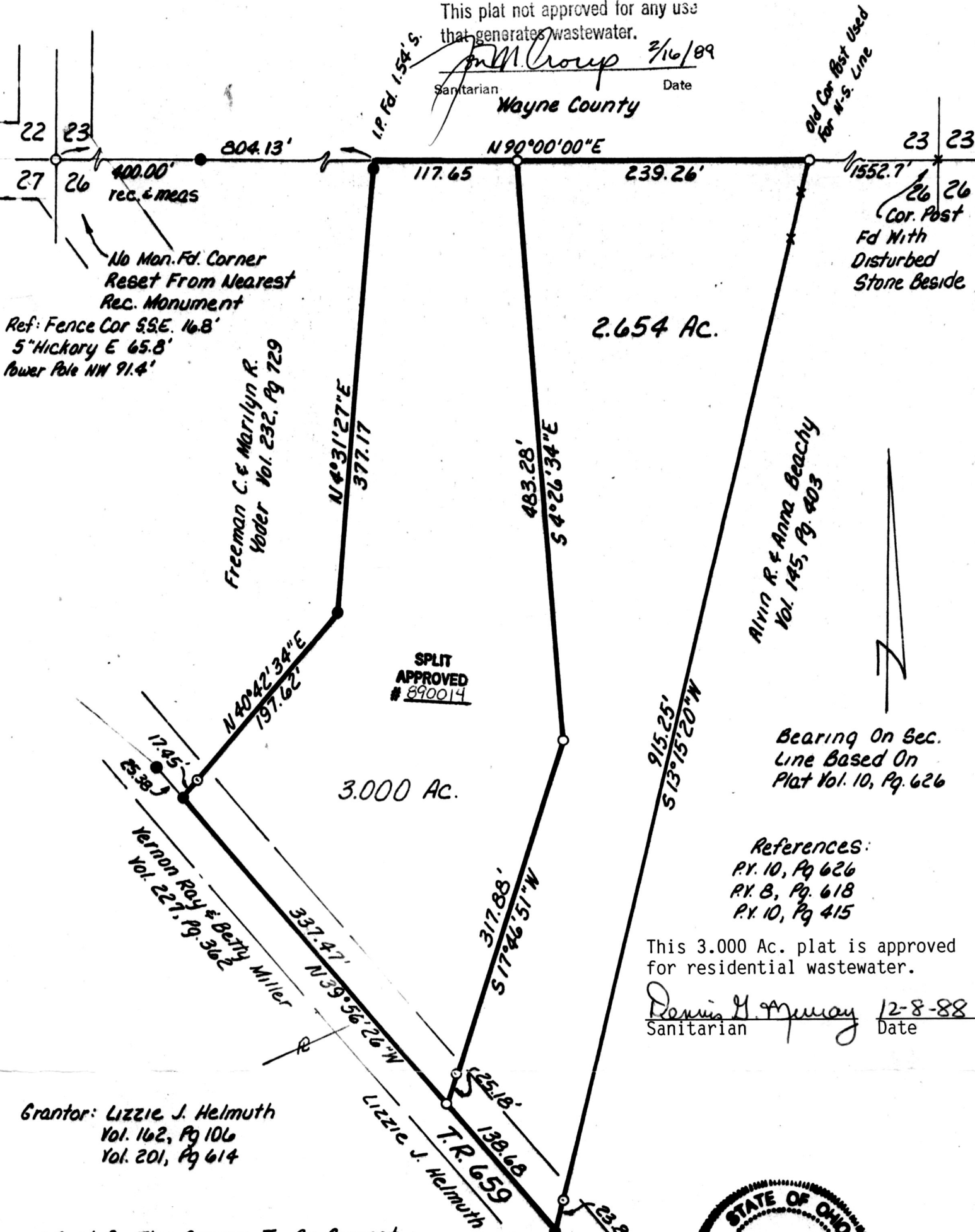
- Iron Pin Found
 - Iron Pin Set- 5/8" Rebar With Yellow Cap Marked "LONG SURVEYING INC"
- I.P.'s in Road Have No Caps.



(2.654 Ac.)

This plat not approved for any use that generates wastewater.

Wm Croup 2/16/89
Sanitarian Date
Wayne County



Bearing On Sec. Line Based On Plat Vol. 10, Pg. 626

- References:
 P.Y. 10, Pg 626
 P.Y. B, Pg. 618
 P.Y. 10, Pg 415

This 3.000 Ac. plat is approved for residential wastewater.

Dennis H. Murray 12-8-88
Sanitarian Date

Grantor: Lizzie J. Helmuth
 Vol. 162, Pg 106
 Vol. 201, Pg 614

I Certify This Survey To Be Correct To The Best Of My Knowledge
Donald G. Long October 25, 1988

Donald G. Long P.S. 7115
 LONG SURVEYING, INC.
 13301 T.R. 503
 Big Prairie, Ohio 44611

rec'd. FEB 23 1989
 FEB 24 1989

At 1:34 O'CLOCK PM
 Holmes Co. Ohio Fee: 5.00
 Pg. 151 Recorder *Richard Graven*
 Tom Lee

