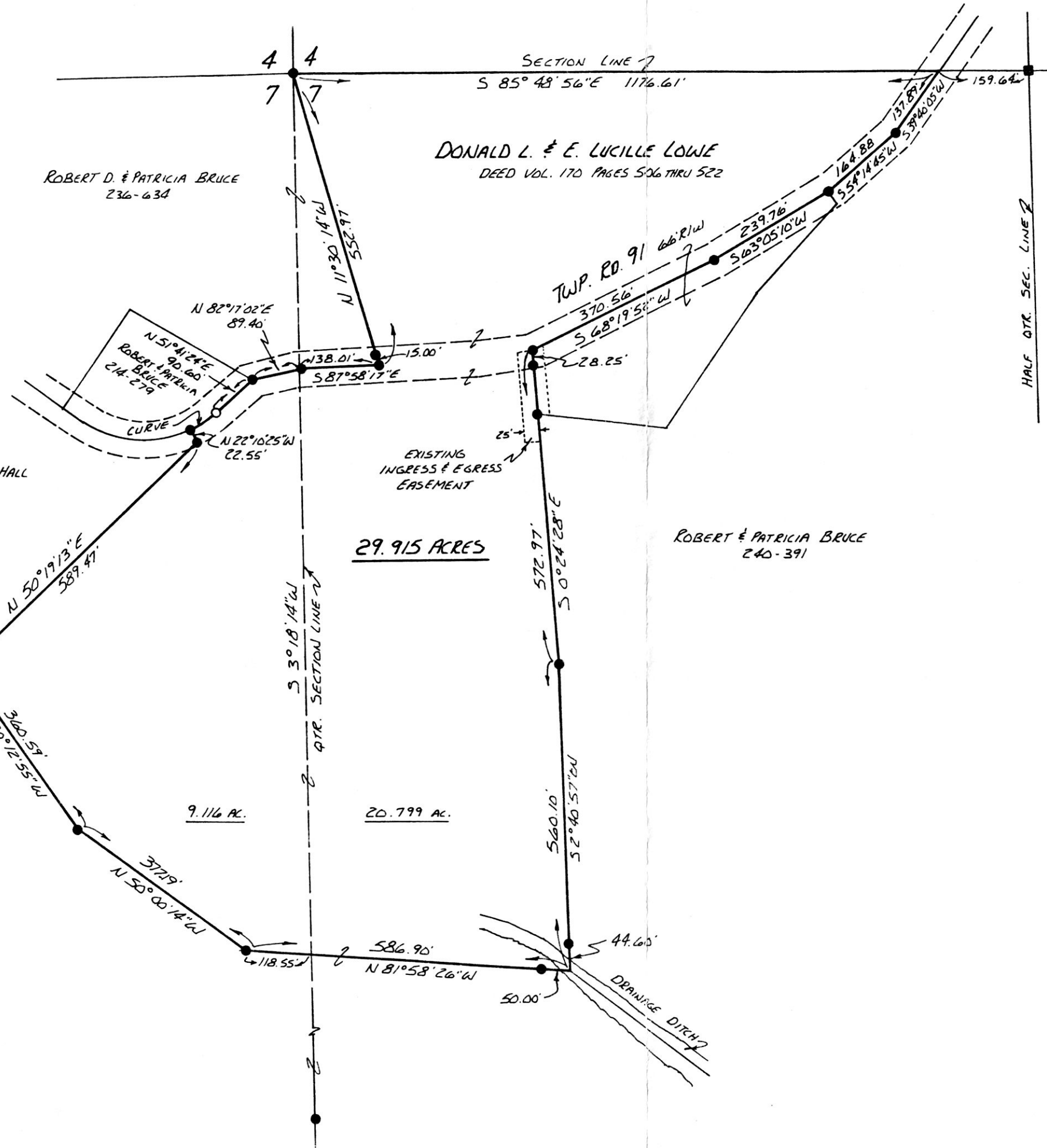
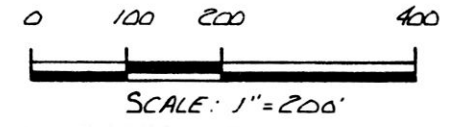


CURVE DATA
 Δ - 16°16'30"
 R - 195.04'
 T - 27.89'
 ARC 55.40'
 CH BEG. N 59°49'38" E
 CH. 55.22'



KILLBUCK TOWNSHIP
 N.E. QTR. & N.W. QTR. SEC. 7
 T-8 N R-7 W
 HOLMES COUNTY, OHIO

SURVEYED FOR: DON & LUCILLE LOWE



- STONE FOUND
- IRON PIN FOUND
- 5/8" REBAR WITH I.D. CAP SET
I.D. CAP MARKED "BAKER 6938"

REFERENCES:

PLAT VOL. 10 PAGE 237
 PLAT VOL. 6 PAGE 48
 PLAT VOL 10 PAGE 827
 & CORRECTED PLAT
 BEARINGS FROM PLAT VOL. 13
 PAGE 23



I CERTIFY THIS SURVEY TO BE CORRECT TO THE BEST OF MY KNOWLEDGE.

Donald C. Baker
 DONALD C. BAKER P.S. 6938
 4321 TR 252
 GLENMONT, OH.

DEC. 29, 1988

MAP OFFICE COPY

REC'D. DEC 29 1988 AT 3:57 O'CLOCK P.M.
 HOLMES CO., OHIO DEPT. 9:35
 Recorder Richard D. Hanen
 Don Mastache