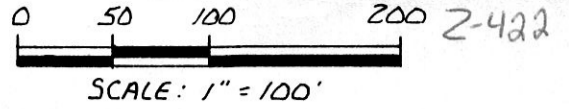


WALNUTCREEK TOWNSHIP  
S.E. QTR. SECTION 5, T-9N; R-4W  
HOLMES COUNTY, OHIO



- IRON PIN FOUND
- △ R.R. SPIKE SET
- 5/8" REBAR WITH I.D. CAP SET  
I.D. CAP MARKED "BAKER 6938"

REFERENCES:

PLAT VOL. 7 PAGE 147  
 PLAT VOL. 6 PAGE 62  
 BEARINGS FROM PLAT VOL. 11  
 PAGE 2  
 VARIOUS DEEDS AS SHOWN

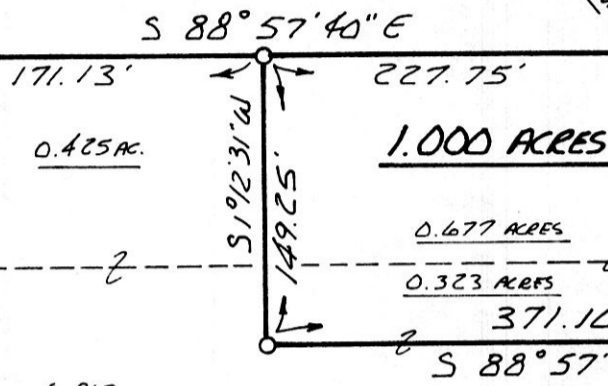
SPLIT APPROVED #880171 (1.000 Ac.)

This plat not approved for any use that generates wastewater.

Dennis H. Murray 11-9-88  
 Sanitarian Date

HAROLD & SUE NEUENSCHWANDER  
 186-396

MARY BEACHY  
 190-701  
 224-758  
 230-814



CENTERLINE ROAD ESTABLISHED FROM PLAT VOL. 6 P. 62

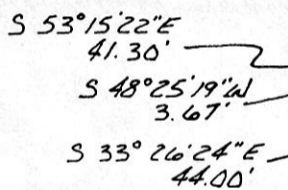
SPLIT APPROVED #880172 (0.063 Ac.)

This plat not approved for any use that generates wastewater.

Dennis H. Murray 11-9-88  
 Sanitarian Date

7.288 ACRES

MINERVA MILLER  
 DEED VOL. 175 PAGE 476



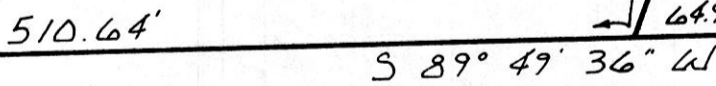
JOE I. & ADA R. WEAVER  
 202-542  
 223-290

SPLIT APPROVED #880173

(0.009 Ac.)

This plat not approved for any use that generates wastewater.

Dennis H. Murray 11-9-88  
 Sanitarian Date



PAUL U. & BETTY A. GARBER  
 223-521

(0.569 Ac.)

SPLIT APPROVED #880174

This plat not approved for any use that generates wastewater.

Dennis H. Murray 11-9-88  
 Sanitarian Date

161795



I CERTIFY THIS SURVEY TO BE CORRECT TO THE BEST OF MY KNOWLEDGE.

Donald C. Baker  
 DONALD C. BAKER P.S. 6938  
 4321 TR 252  
 GLENMONT, OH.

OCT. 11, 1988

Deed Vol. 241 Pages 229, 231, 233, & 238.

REC'D. NOV 15 1988  
 AT 11:06 O'CLOCK AM  
 NOV 16 1988  
 RECORDED  
 Plat VOL 12 PG. 99  
 Holmes Co. Ohio Fee: 9.35  
 Richard Draven Recorder

17X11X5 Laurel

