

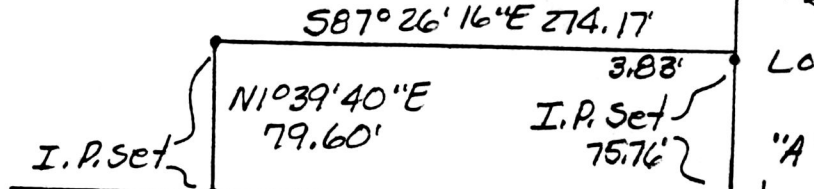
Albert & Clara Weaver
V. 227 P. 483-485

I.P. Pd. at
N.E. crnr 20.175 acre
tract P.B. 10 Pg. 417 Hazel
Asher
V. 148 P. 323

"A" This pin was set in 1974 (P.B. 7 P. 273)
and found bent badly in 1987. It
was straightened then, as accurately
as practically possible, hence it may
not be exactly as it
originally was.

Lot 6

0.5000 Ac.
Part of V. 227 P. 483-485



3.01.22.20 N
20.23.10"E
1679.02
20.16.91

Lot 5

"A"

Lot 7 N87° 26' 16" W 273.16'

Alvoide J. & Sue S. Williams
V 232 P. 168

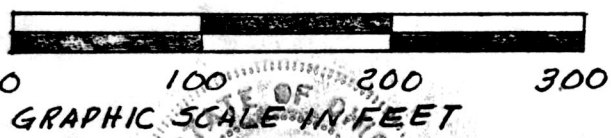
Lot 4
Beverly Ann
McCullough
V 221 P 399

NORTH
This plat not approved for any use
that generates wastewater.
Date 2 Sept 88
Sanitarian

SPLIT
APPROVED
880145

Known as part of Lot 6, 2nd Qtr., T. 9N., R. 8W., of Monroe
Twp., Hol. Co., Ohio, and as part of V. 227 P. 483-485.

Beginning at an iron pin at the S.E. crnr of Lot 6;
thence with the south line thereof North 87° 26' 16" "
West 273.16' to an iron pin set;
thence leaving said South Line North 1° 39' 40" East
79.60' to an iron pin set;
thence South 87° 26' 16" East 274.17' to a point on
the East Line of Lot 6;
thence with the East Line of Lot 6 South 2° 23' 10" "
West 79.59' to the point of beginning and passing an iron
pin set on line at 3.83', and containing 0.5000 acres.



Known as part of Lot 6,
2nd Qtr., T. 9N., R. 8W., of
Monroe Twp., Hol. Co., Ohio.

Robert L. Kasner P.S. 5193
P.E. 28820
8/20/88



161037
Rec'd. SEP 14 1988 AT 11:52 O'CLOCK A.M.

Recorded SEP 15 1988 Holmes Co. Ohio Fee: 5.00

Plat Vol. 12 Pg. 67 Recorder Richard Weaver

MAP OFFICE COPY