

SPLIT APPROVED # 882106

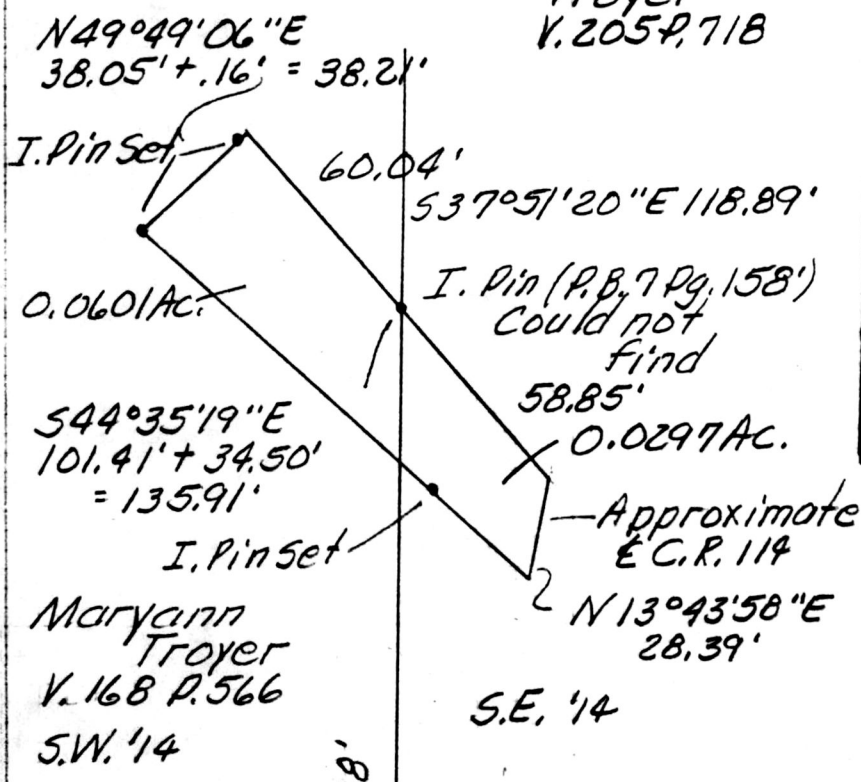
AtLee M. & Sovilla Troyer
V. 205 P. 718



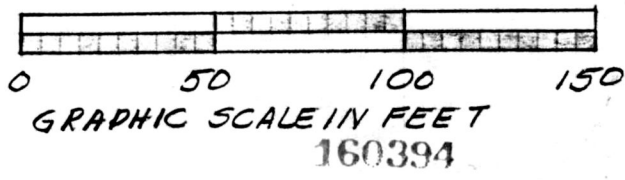
(0.0601 Ac.)

This plat not approved for any use that generates wastewater.

Jan M. Croop 7/7/88
Sanitarian Date



NORTH



Rec'd. JUL 12 1988 AT 10:15 O'CLOCK AM
Recorded JUL 12 1988 Holmes Co. Ohio Fee: 5.00
Plat Vol. 12 Pg. 32 Recorder Richard J. Hansen

Deed Vol. 239 Page 691

PLAT OF A SURVEY FOR ATLEE M. TROYER (Grantee)

Known as part of the S.E. & S.W. 1/4s of Sec. 22, T.9N., R. 5W., of Walnut Creek Twp., Hol. Co., Ohio.

Robert L. Kasner P. 5.5193 P. E. 28820 6/25/88

S.W. crnr S.E. 1/4 Sec. 22, T.9N. R. 5W., of Walnut Creek Twp., Hol. Co., Ohio.

MAP OFFICE COPY