

**RICHLAND TOWNSHIP
HOLMES COUNTY, OHIO
S.E. QTR., SEC. 8, T-8N, R-9W
N.E. QTR., SEC. 13, T-8N, R-9W**

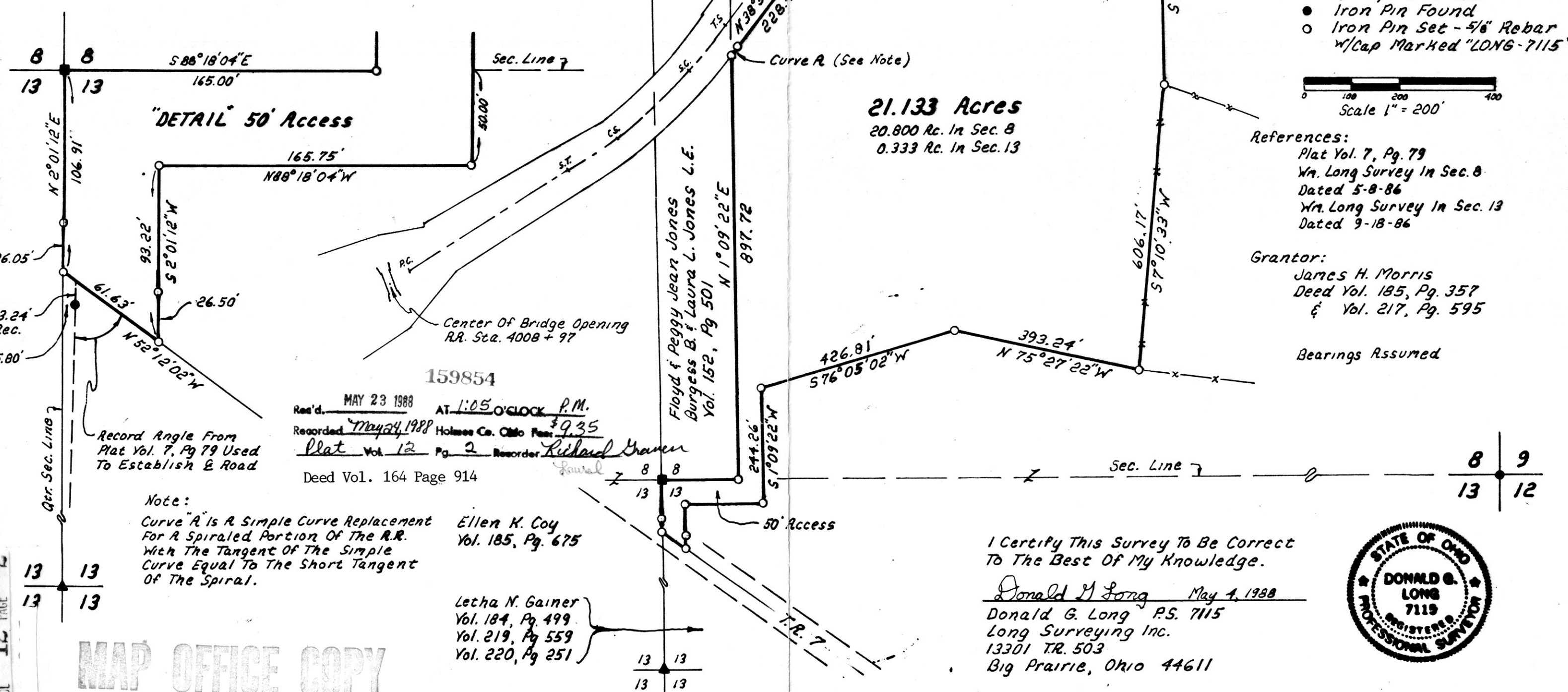
159854

Cole Excavators Inc.
Vol. 178, Pg 312

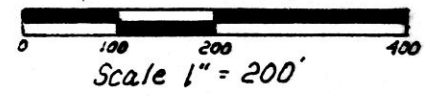
NW 1/4 & Phys. 2 Ballest
At Fill Area Used For
R.R. Alignment.

Curve A
Delta 00°13'11"
Radius 1304.07'
Length 5.00'
Chord 5.00'
Ch. Brq N39°05'42"E

Curve B
Delta 26°01'20"
Radius 976.60'
Length 443.55'
Chord 439.75'
Ch. Brq N51°59'46"E



- Stone Found
- ▲ R.R. Spike Found
- Iron Pin Found
- Iron Pin Set - 5/8" Rebar w/Cap Marked "LONG-7115"



References:
Plat Vol. 7, Pg. 79
Wm. Long Survey In Sec. 8
Dated 5-8-86
Wm. Long Survey In Sec. 13
Dated 9-18-86

Grantor:
James H. Morris
Deed Vol. 185, Pg. 357
& Vol. 217, Pg. 595

Bearings Assumed

21.133 Acres
20.800 Ac. In Sec. 8
0.333 Ac. In Sec. 13

159854
Rec'd. MAY 23 1988 AT 1:05 O'CLOCK P.M.
Recorded May 24, 1988 Holmes Co. Ohio Fee \$9.35
Plat Vol. 12 Pg. 2 Recorder Richard Graner
Deed Vol. 164 Page 914

Note:
Curve "A" is a Simple Curve Replacement
For a Spiraled Portion Of The R.R.
With The Tangent Of The Simple
Curve Equal To The Short Tangent
Of The Spiral.

Ellen K. Coy
Vol. 185, Pg. 675

Letha N. Gainer
Vol. 184, Pg. 499
Vol. 219, Pg. 559
Vol. 220, Pg. 251

I Certify This Survey To Be Correct
To The Best Of My Knowledge.

Donald M Long May 4, 1988
Donald G. Long P.S. 7115
Long Surveying Inc.
13301 TR. 503
Big Prairie, Ohio 44611



MAP OFFICE COPY

VOL 12 PAGE 2