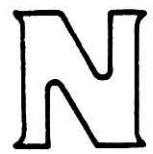
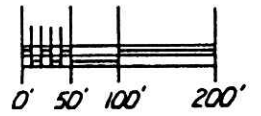


MAP OFFICE COPY

RIPLEY TOWNSHIP
PART OF THE N.E. QTR. OF SECTION 35
T-18N:R-14W
HOLMES COUNTY
OHIO



SCALE: 1" = 200'



SPLIT APPROVED #880250

(3.247 Ac.)

This plat not approved for any use that generates wastewater.

Mat Miller 3-15-88
Sanitarian Date

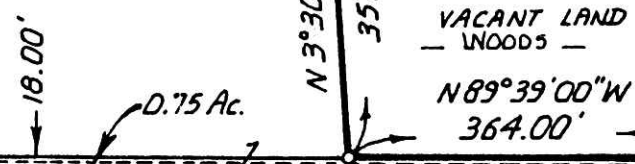
HOWARD & DOROTHY H. DYE

DEED VOL. 167 PG. 404
HAROLD F. & ESTHER TROYER
13.50 Ac.
- 3.247 Ac.
10.253 Ac.

40.50 Ac.

DEED VOL. 207 PG. 740
6.68 Ac.

3.247 Ac.
VACANT LAND - WOODS



35
35
35
35

35
36
35
36

PAUL A. & VERNA I. KEIM
12.38 Ac.
DEED VOL. 230 PG. 792
TRACT 3

40 Ac.

- - STONE FOUND
- ▲ - RR SPIKE FND.
- - IRON COR. FND.
- - IRON COR. SET:
(5/8" x 30" REBAR
W/ PLASTIC I.D. CAP)
5/8" x 15" REBAR
SET IN ROAD -
NO I.D. CAP

BASIS OF BEARINGS: N89°39'W ALONG QTR. SEC. LINE AS PER PLAT VOL. 8 PG. 517

REFERENCE SURVEYS: PLAT VOL. 8 PG. 517
PLAT VOL. 10 PG. 548
PLAT VOL. 10 PG. 738
3.046 Ac. & 2.000 Ac. SURVEYS (IN N.E. QTR. SEC. 35 & N.W. QTR. SEC. 36) BY D.C. BAKER ON MAR. 19, 1987

I CERTIFY THIS SURVEY TO BE CORRECT TO THE BEST OF MY KNOWLEDGE.

(COMPLETED: FEB. 23, 1988)

Larry P. Conn
LARRY P. CONN P.S. 6941

R.W. GASBARRE & ASSOC. INC.
P.O. BOX 44
401 S. MARKET ST.
WOOSTER, OHIO 44691
(216) 264-9499



Rec'd. APR 13 1988 AT 2:34 O'CLOCK PM
Recorded April 14, 1988 Holmes Co. Ohio Fee: 9.35
Plat Vol. 11 Pg. 194 Recorder *Richard Gruen*