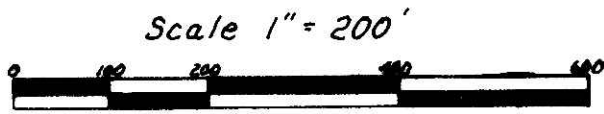


**RICHLAND TOWNSHIP  
HOLMES COUNTY, OHIO  
S.E. QTR. SEC. 17, T-8N, R-9W**



This Parcel is Part Of Lands Currently Owned By  
Patrick H. & Nancy L. Reymann, Deed Vol. 207, Pg. 121.

- Iron Pin Found
- △ R.R. Spike Set
- Iron Pin Set - 5/8" Rebar With Yellow Cap Marked "LONG 7115"

Bearings Assumed

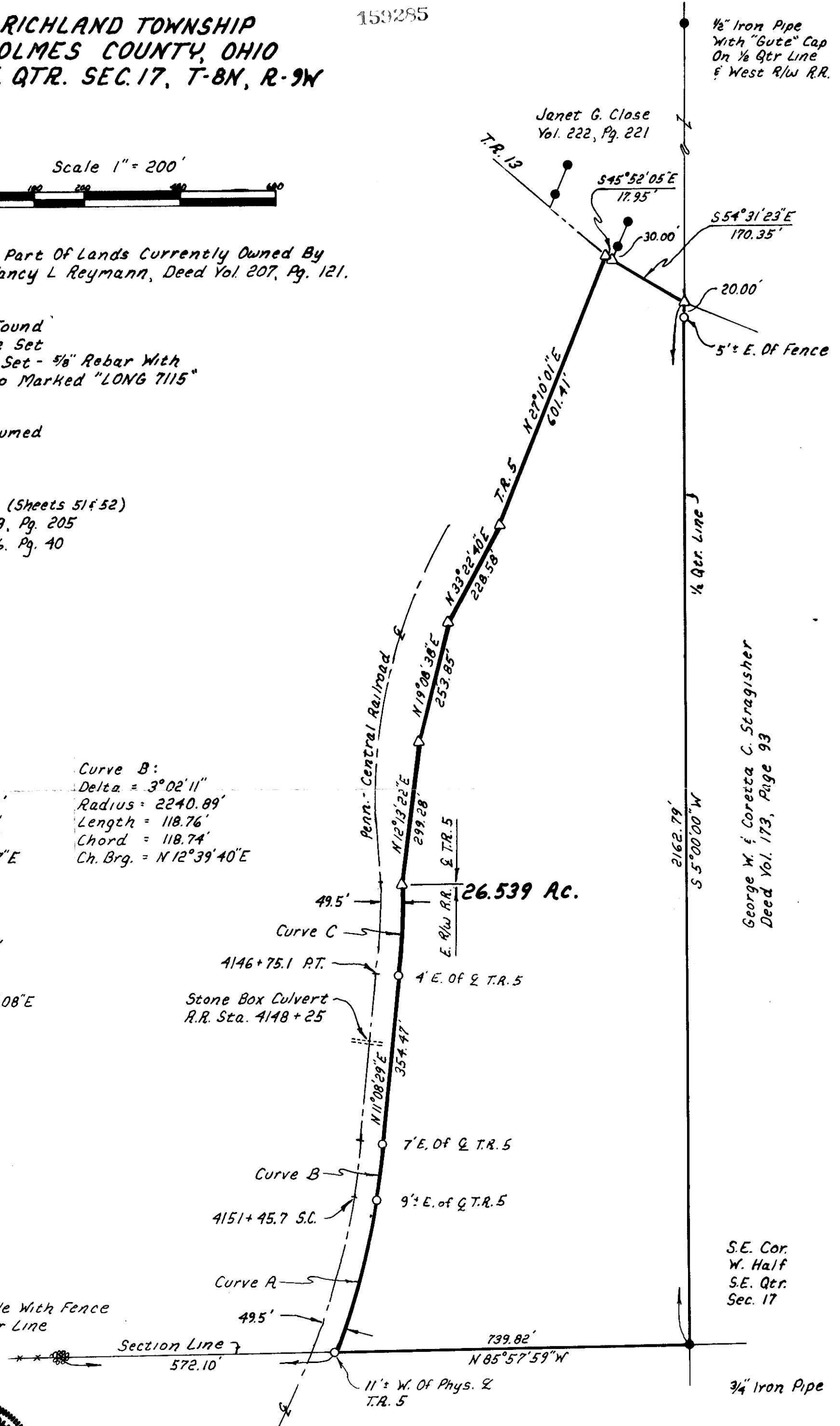
References:

- R.R. Plans (Sheets 51 & 52)
- Plat Vol. 9, Pg. 205
- Plat Vol. 6, Pg. 40

**Curve A:**  
Delta = 10° 57' 03"  
Radius = 1694.61'  
Length = 323.89'  
Chord = 323.40'  
Ch. Brg. = N19° 39' 17" E

**Curve B:**  
Delta = 3° 02' 11"  
Radius = 2240.89'  
Length = 118.76'  
Chord = 118.74'  
Ch. Brg. = N12° 39' 40" E

**Curve C:**  
Delta = 7° 18' 47"  
Radius = 1482.19'  
Length = 189.19'  
Chord = 189.06'  
Ch. Brg. = N7° 29' 08" E



George W. & Coretta C. Stragisher  
Deed Vol. 173, Page 93

MAP OFFICE COPY



159285

I Certify This Survey To Be Correct To The Best Of My Knowledge.  
Donald G. Long 3/3/88  
Donald G. Long P.S. 7115  
Long Surveying Inc.  
13301 T.R. 503  
Big Prairie, Ohio 44611

Rec'd. MAR 30 1988 AT 3:25 O'CLOCK PM  
Recorded MAR 31 1988 Holmes Co. Ohio Fee: 9:35  
Plat Vol. 10 Pg. 190 Recorder: Richard Hovener

Deed Vol. 238 Page 573