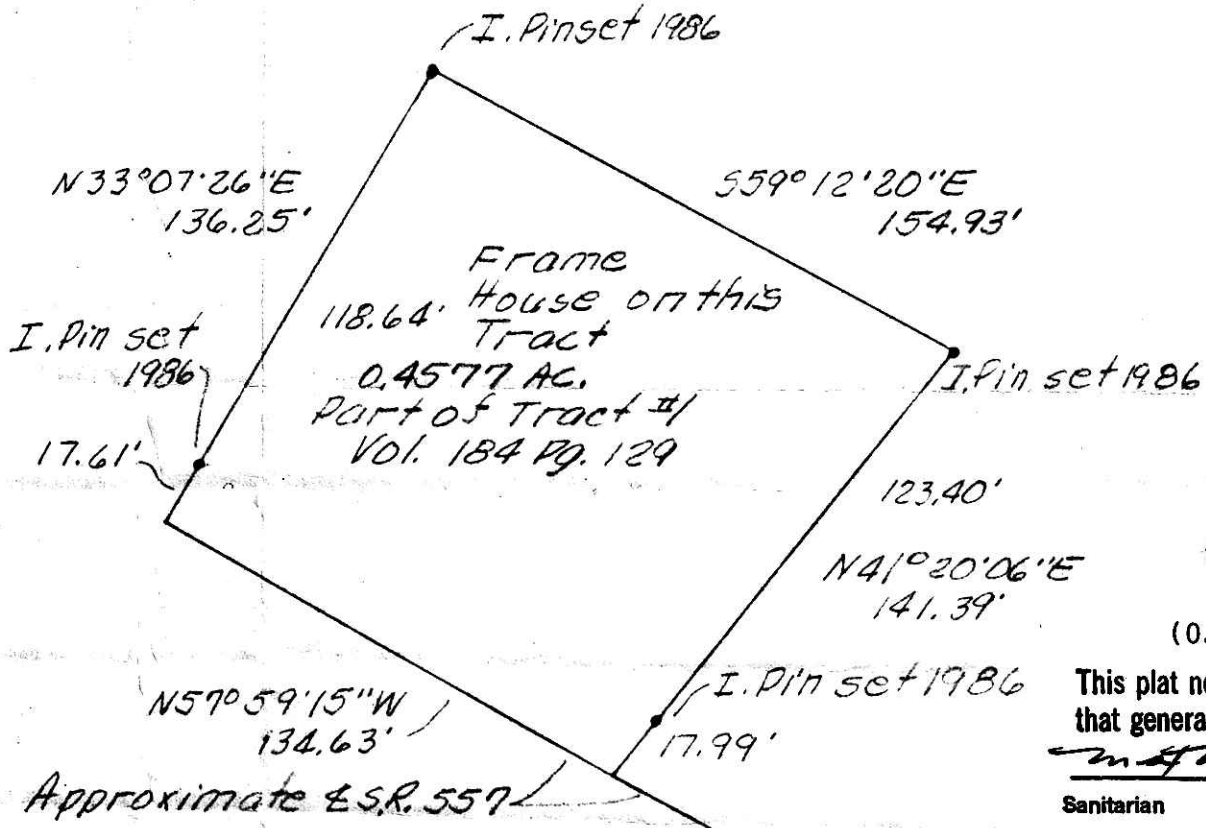


SPLIT APPROVED # 870128

This 0.4577 Ac. tract is approved for residential wastewater.

*Mat Mill*  
Sanitarian  
9-9-87  
Date



SPLIT APPROVED # 870130

(0.102 Ac.)

This plat not approved for any use that generates wastewater.

*Mat Mill* 9-9-87  
Sanitarian Date

SPLIT APPROVED # 870131

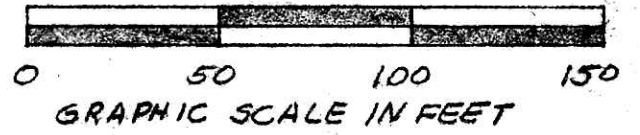
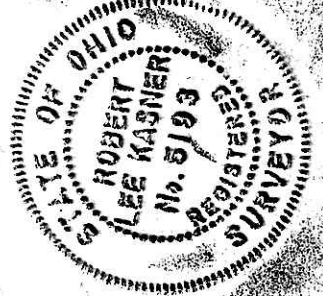
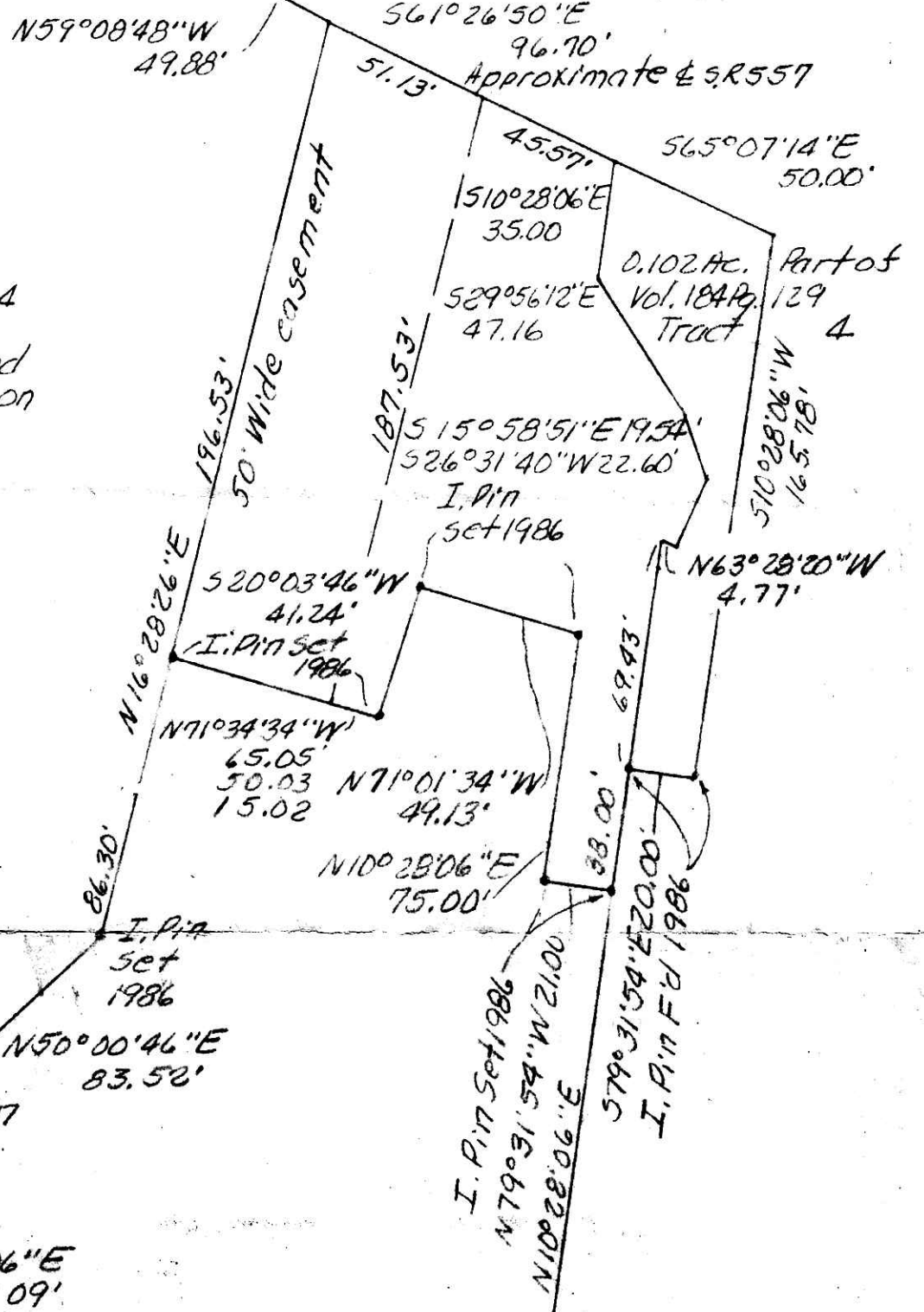
(0.5058 Ac.)

This plat not approved for any use that generates wastewater.

*Mat Mill* 9-9-87  
Sanitarian Date

0.5058 Ac.  
Part of Tract # 4  
Vol. 184 Pg. 129  
Machine Shop and  
Frame Garage on  
this tract.

NORTH

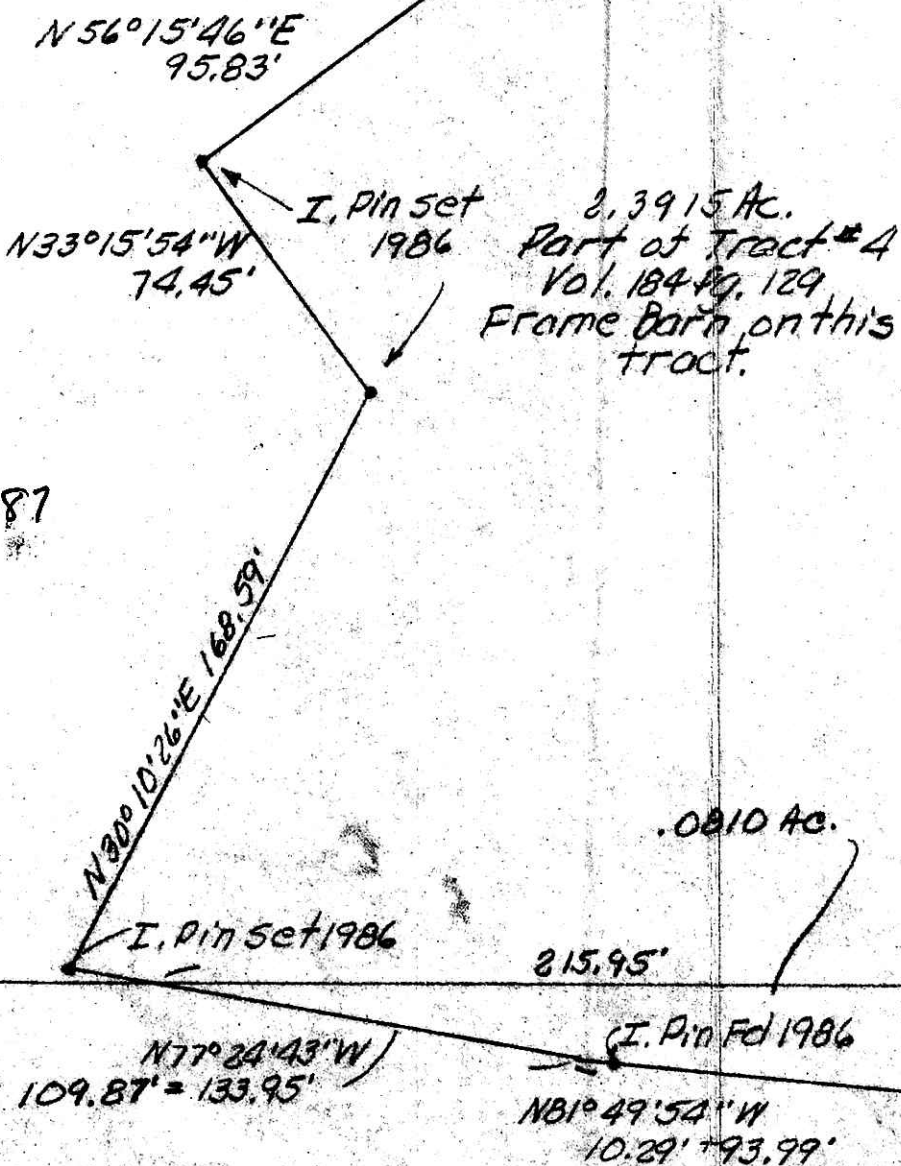


SPLIT APPROVED # 870129

(2.4725 Ac.)

This plat not approved for any use that generates wastewater.

*Mat Mill* 9-9-87  
Sanitarian Date



PLAT OF A SURVEY FOR  
MELVIN A. BARKMAN  
(Grantor)  
Known as part of N. W. &  
S. W. 1/4s of sec. 5, T. 8 N.,  
R. 5 W. of Clark Twp.,  
Hol. Co., Ohio.  
Robert L. Kasner P.S. 5193  
P.E. 28820  
1122187

P.B. 9 Pg. 143  
N87°15'00\"/>

Rec'd. SEP 28 1987 AT 2:00 O'CLOCK PM  
Recorded SEP 29 1987 Holmes Co. Ohio Fees 13.65