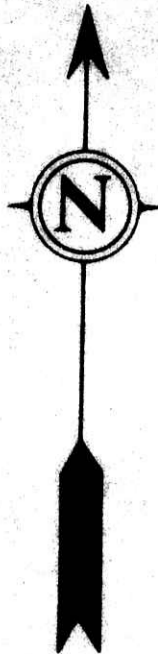


Bearing basis Assumed North.

Pertinent documents: Tax Maps, New Bedford Quadrangle Map, 4 surveys by Wm. T. Burkey, R.S. 5107 and all deeds as shown.

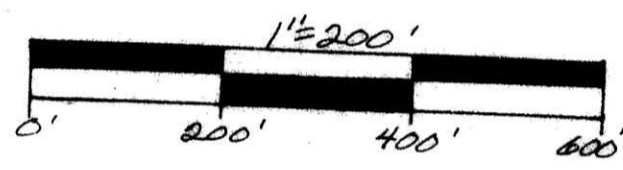
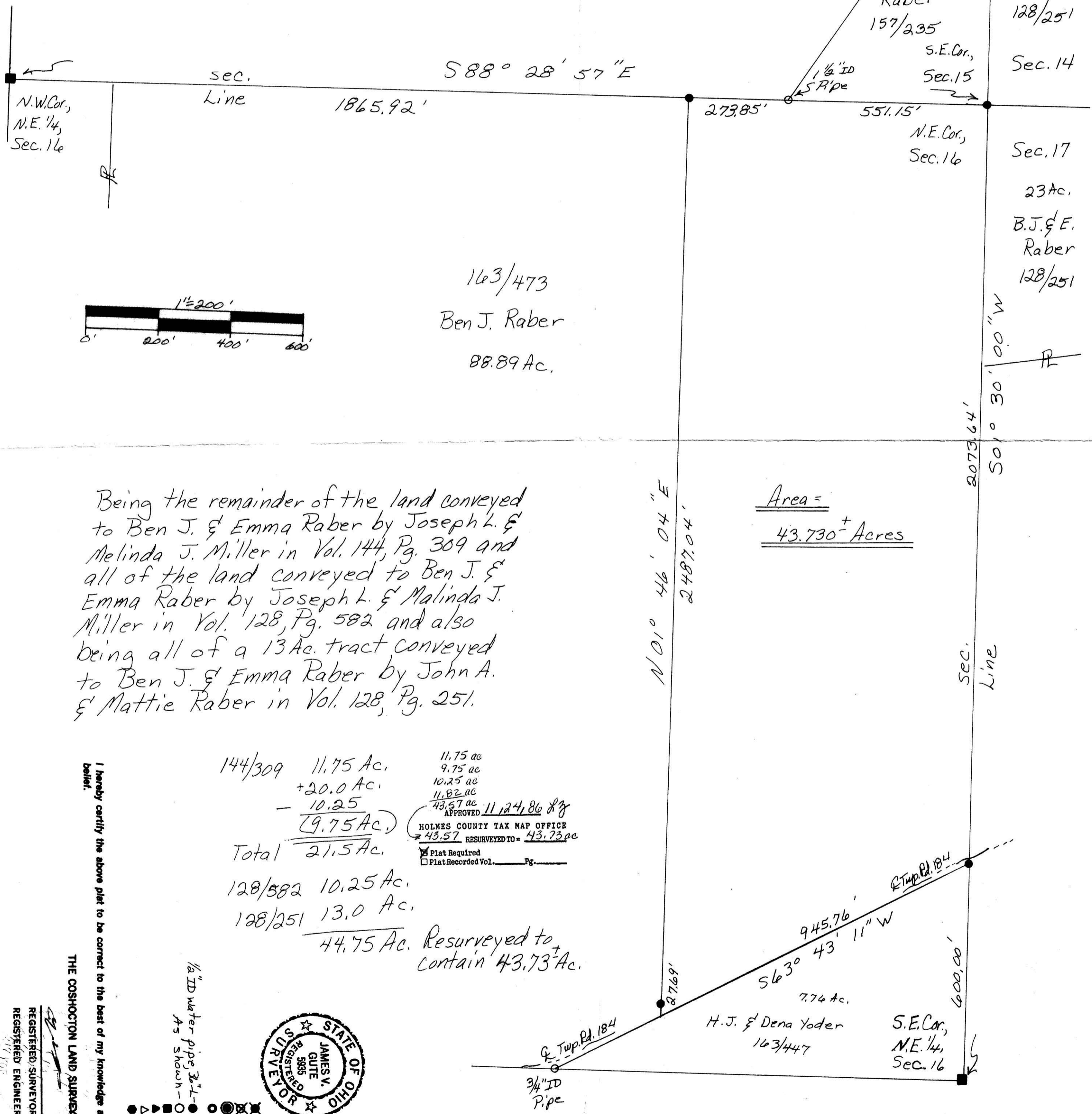


SECTION 16, TOWNSHIP 14 N, RANGE 5 W, COUNTY HOLMES, OHIO

THE COSHOCTON LAND SURVEYING SERVICE, INC. 233 S. FOURTH ST. COSHOCTON, OHIO 43812

100 FEET DIMENSION

SURVEY FOR: Ben Raber DATE: October 1986 SCALE: 1" = 200'



163/473 Ben J. Raber 88.89 Ac.

Area = 43.730+ Acres

Being the remainder of the land conveyed to Ben J. & Emma Raber by Joseph L. & Melinda J. Miller in Vol. 144, Pg. 309 and all of the land conveyed to Ben J. & Emma Raber by Joseph L. & Malinda J. Miller in Vol. 128, Pg. 582 and also being all of a 13 Ac. tract conveyed to Ben J. & Emma Raber by John A. & Mattie Raber in Vol. 128, Pg. 251.

144/309 11.75 Ac. + 20.0 Ac. - 10.25 (9.75 Ac.) Total 21.5 Ac. 128/582 10.25 Ac. 128/251 13.0 Ac. 44.75 Ac. Resurveyed to contain 43.73 Ac.

HOLMES COUNTY TAX MAP OFFICE APPROVED 11/24/86 BY 43.57 RESURVEYED TO 43.73 ac



- Legend for symbols: SET RR. SPRINK, FND. RR. SPRINK, SET CONC. MON, FND. CONC. MON, SET IRON PIN, FND. IRON PIN, SET PK. NAIL, FND. PK. NAIL, CORNER POST, 1/2" ID water pipe, 3/4" ID AS shown.

Subject To All Easements And Rights-Of-Way, Public And Private, Of Record

PLAT "A" Plat Vol. 11, Recorded JAN 12 1987, at 2:56 o'clock P.M., Recorder Richard Thayer

FB124 P10-11 S3 F28