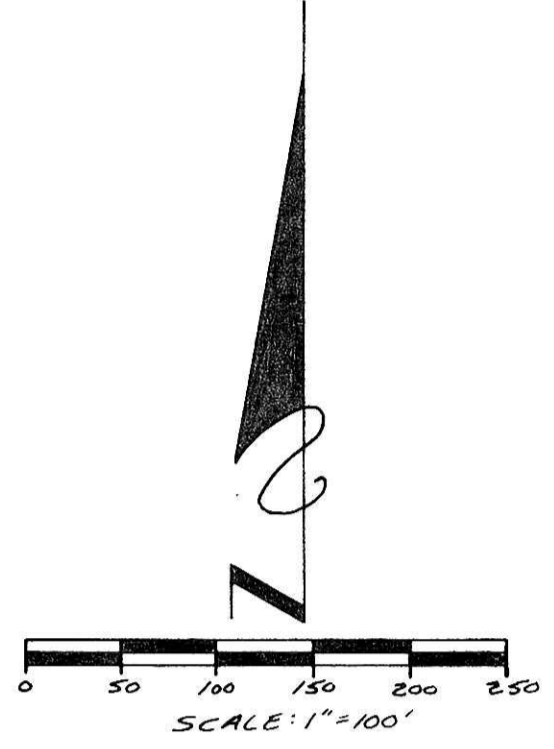
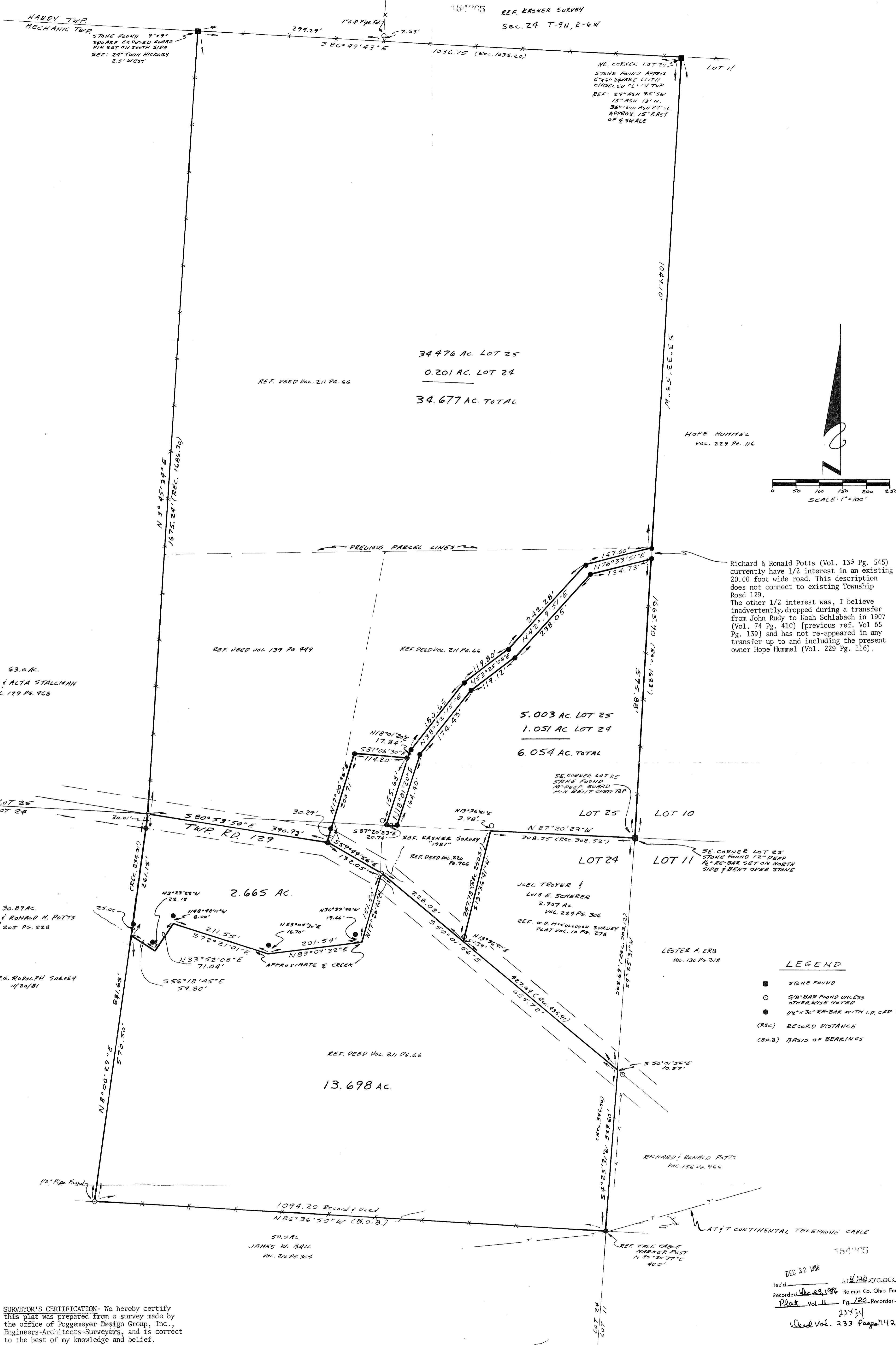


N7170



Richard & Ronald Potts (Vol. 133 Pg. 545) currently have 1/2 interest in an existing 20.00 foot wide road. This description does not connect to existing Township Road 129. The other 1/2 interest was, I believe inadvertently, dropped during a transfer from John Rudy to Noah Schlabach in 1907 (Vol. 74 Pg. 410) [previous ref. Vol. 65 Pg. 139] and has not re-appeared in any transfer up to and including the present owner Hope Hummel (Vol. 229 Pg. 116).

- LEGEND**
- STONE FOUND
  - 5/8" RE-BAR FOUND UNLESS OTHERWISE NOTED
  - 1/2" x 3/8" RE-BAR WITH I.D. CAP SET
  - (REC) RECORD DISTANCE
  - (B.A.B) BASIS OF BEARINGS

**SURVEYOR'S CERTIFICATION**- We hereby certify this plat was prepared from a survey made by the office of Poggemeyer Design Group, Inc., Engineers-Architects-Surveyors, and is correct to the best of my knowledge and belief. All distances are in feet and decimals thereof. Bearings are based on an assumed meridian and are used for angular measurement only.



Robert A. Priest P.S. No. 6924

DEED 22 1886  
 Rec'd. AT 12:30 O'CLOCK PM  
 Recorded Vol. 23, 1886 Holmes Co. Ohio Fees 39.00  
 Plat Vol. 11 Pg. 120 Recorder Richard Weaver  
 23834  
 Deed Vol. 233 Pages 742, 745, 748

SURVEY PERFORMED AT THE REQUEST OF:  
 CASTLE NURSING HOME INC.  
 231 N. WASHINGTON ST.  
 MILLERSBURG, OHIO 44654

HAND OFFICE COPY

DATE: October 7, 1986

ANY INFORMATION OR DATA ON THIS DRAWING IS NOT INTENDED TO BE SUITABLE FOR REUSE BY ANY PERSON, FIRM OR CORPORATION OR ANY OTHERS ON EXTENSIONS OF THIS PROJECT OR FOR ANY USE ON ANY OTHER PROJECT ANY REUSE WITHOUT WRITTEN VERIFICATION AND ADAPTATION BY THE ENGINEER, ARCHITECT OR SURVEYOR FOR THE SPECIFIC PURPOSE INTENDED WILL BE AT THE USER'S SOLE RISK AND WITHOUT LIABILITY OR LEGAL EXPOSURE TO THE ENGINEER, ARCHITECT OR SURVEYOR.

EXISTING		PROPOSED		REVISIONS	
DRAWN BY	CHECKED BY	DRAWN BY	CHECKED BY		
R.A.P.					
CHECKED BY		CHECKED BY			
APPROVED BY		APPROVED BY			

MAP OF SURVEY  
 PART OF LOTS 24 & 25 2ND QUARTER, T-8N, R-6W  
 MECHANIC TOWNSHIP HOLMES COUNTY, OHIO

**POGMEYER DESIGN GROUP, INC.**  
 ENGINEERS ARCHITECTS PLANNERS  
 PORTAGE CENTRE BUILDING 2098 PORTAGE ROAD WOOSTER, OHIO 44691

