

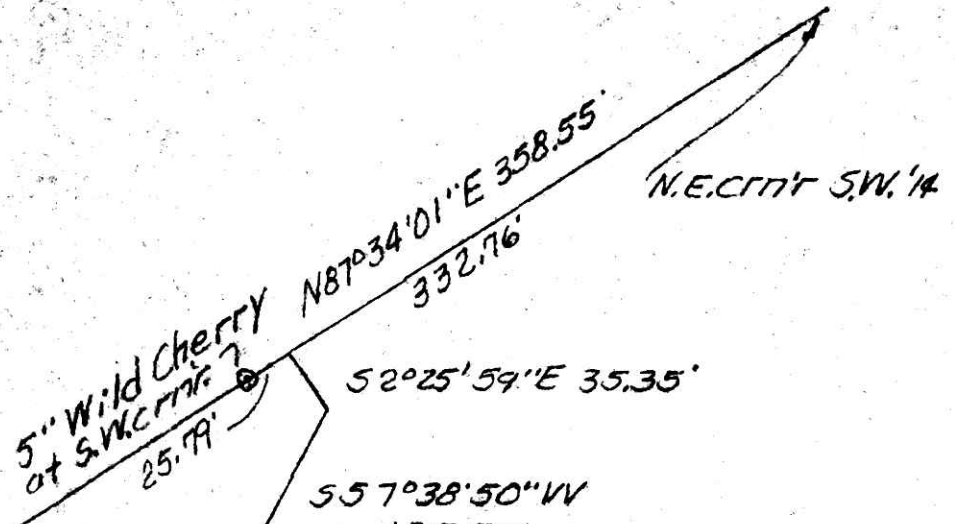
153875

Floyd L. Robinson Vol. 188 Pg. 100

I. Pin set 1986

N88°34'01"E 371.40'

I. Pin set 1986



52°25'59"E 35.35'

557°38'50"W 125.77'

520°56'30"W 154.73'

This is approximate E of old road from this tract to T.R. 516, and E of 50' wide easement.

515°58'10"W 210.39'

Virgil Nussbaum Vol. 138 Pg. 265

543°59'30"W 152.58'

525°19'10"W 189.00'

543°04'50"W 130.66'

SE T.R. 516

N. Line Vol. 220 Pg. 430 Shreve Creek

N 2°41'19"W 352.19'

N13°53'10"E 111.09'

I. Pin set 1986

I. Pin set 1986

N12°12'17"W 226.06'

I. Pin set 1986

N 2°10'28"W 345.00'

I. Pin set 1986

588°05'28"E 227.87'

Old frame house is here.

S. Line Vol. 220 Pg. 430

I. Pin set 1986

N1°08'01"W 131.14'

5" Wild Cherry on East

358.55' N87°34'01"E

bank of Shreve Creek

109.09' I. Pin set 1986

249.46' S.W. 1/4 I. Pin set 1982

see left for easement detail.

Gerald L. & Loralyn Priebe Vol. 219 Pg. 119

John J. & Twila J. Fatt Vol. 137 Pg. 239

153875

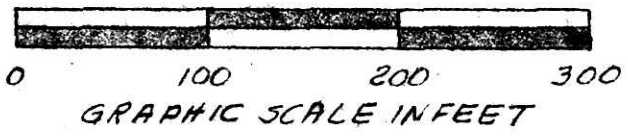
Rec'd. Nov. 20, 1986 AT 10:15 O'CLOCK AM

Recorded Nov. 20, 1986 Holmes Co. Ohio Fee: 10.75

Plat Vol. 11 Pg. 113

Recorder Richard Gruen 13 X 15 X 5

PLUS NOTATION



PLAT OF A SURVEY FOR HAROLD & NANCY TATE (Grantors) Known as part of the N.W. & N.E. 1/4's of Sec. 34, TWP. 18N., R. 14 W., of Ripley Twp., Hol. Co., Ohio. Robert L. Kasner, P.S. 5193, P.E. 28820, 11/11/86

Notate Land Contract 156 Page 180

MAP OFFICE COPY

