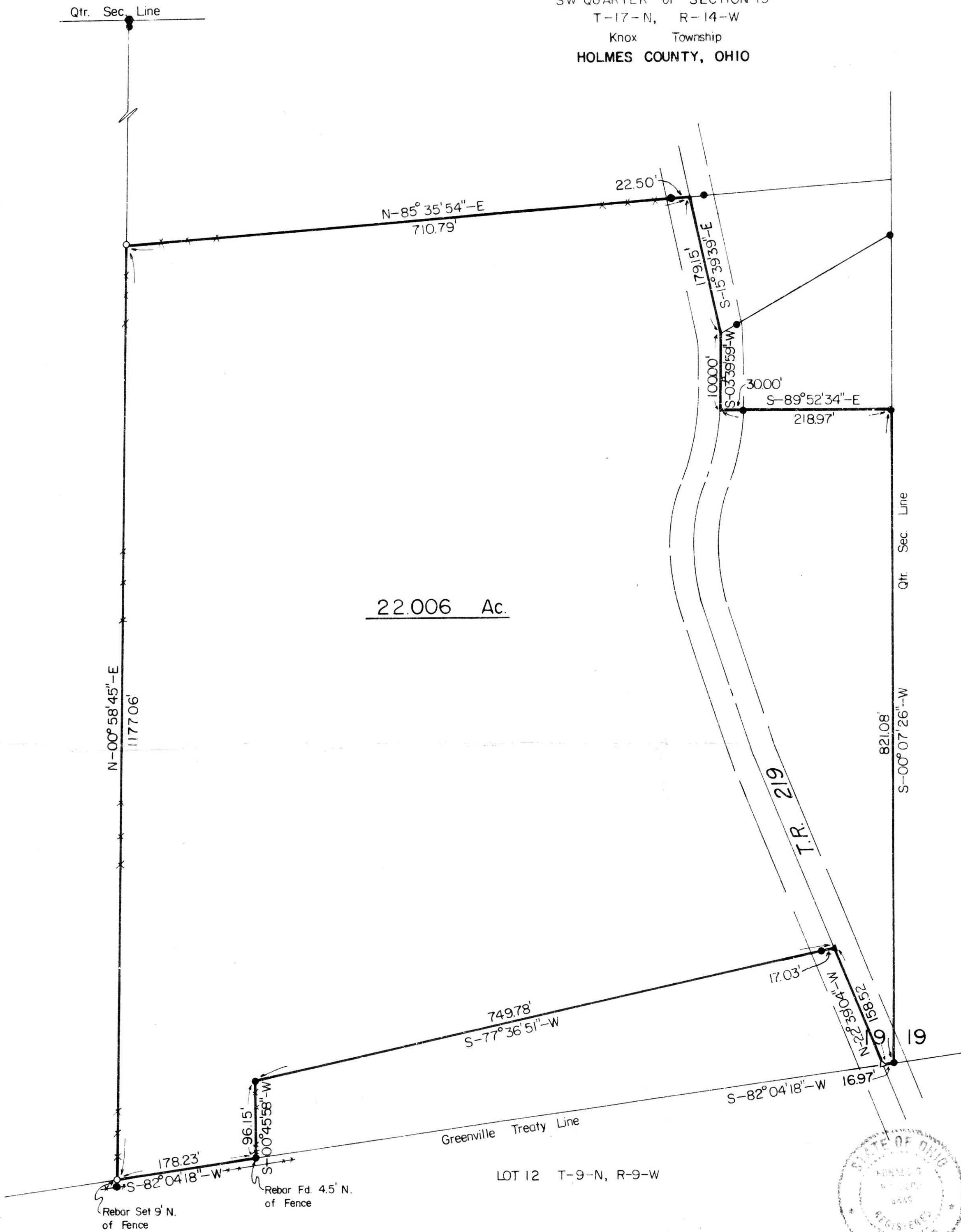


153561

SURVEY PLAT of a 22.006 ACRE PARCEL

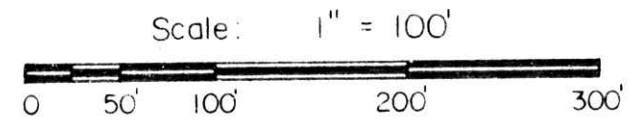
SW QUARTER of SECTION 19
T-17-N, R-14-W
Knox Township
HOLMES COUNTY, OHIO



- Fence Corner Post Fd.
- Iron Pipe or Pin Fd.
- ▲ RR Spike Fd. In Roadway
- △ RR Spike Set In Roadway
- 5/8" x 30 Rebar With Yellow Plastic Cap Marked RUDOLPH 6449 Set

Reference Surveys

- Deed Vol. 131, Pg. 460
- Deed Vol. 163, Pg. 429
- Plat Vol. 3, Pg. 96
- Plat Vol. 4, Pg. 131
- Plat Vol. 7, Pg. 188
- Plat Vol. 7, Pg. 576
- Plat Vol. 9, Pg. 127
- Plat Vol. 10, Pg. 84



I Certify This Survey And Plat To Be Correct To The Best Of My Knowledge.

10-28-86 Ronald G. Rudolph, P.S.
Date Ronald G. Rudolph P.S. No. 6449
R.G. RUDOLPH SURVEYING, Inc.
405 W. Liberty St.
Wooster, Ohio 44691



153561

Rec'd. OCT 28 1986 AT 2:26 O'CLOCK PM
Recorded OCT 29 1986 Holmes Co. Ohio Fee: 12.60
Plat Vol. 4 Pg. 103 Recorder: Richard Shaver
Deed Vol. 233 Pg. 102

Job No. 2456