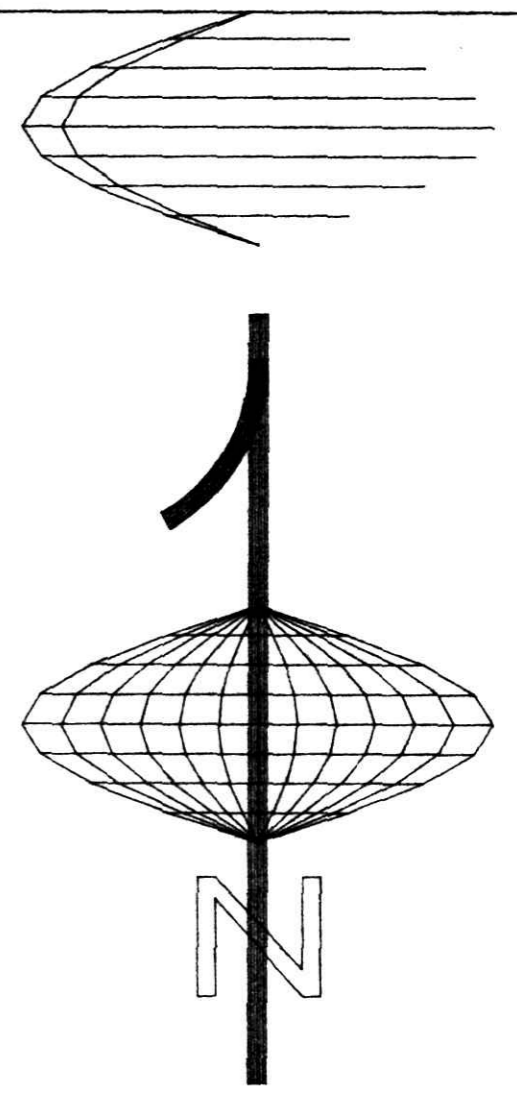
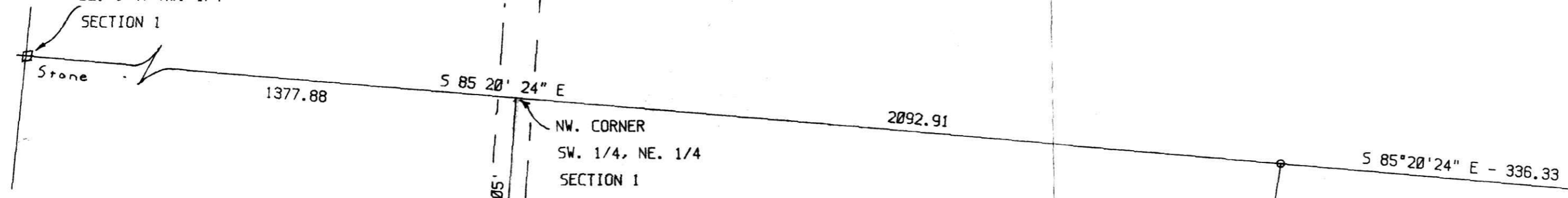


152866



NW. CORNER
SE. 1/4, NW. 1/4
SECTION 1

LESTER HOSTETLER
59.75 ACRES



NW. CORNER
SW. 1/4, NE. 1/4
SECTION 1

MOSE YODER
6.314 ACRES
VOL. 207 PG. 169

DAN J. STUTZMAN
3.189 ACRES
VOL. 215 PG. 559
3.668 ACRES TOTAL

**SPLIT
APPROVED**
800028

LINE	BEARING	DISTANCE
L 1	S 3 57' 40" W	30.37
L 2	S 85° 17' 30" E	25.00
L 3	S 85° 17' 30" E	25.00
L 4	S 85° 17' 30" E	20.00

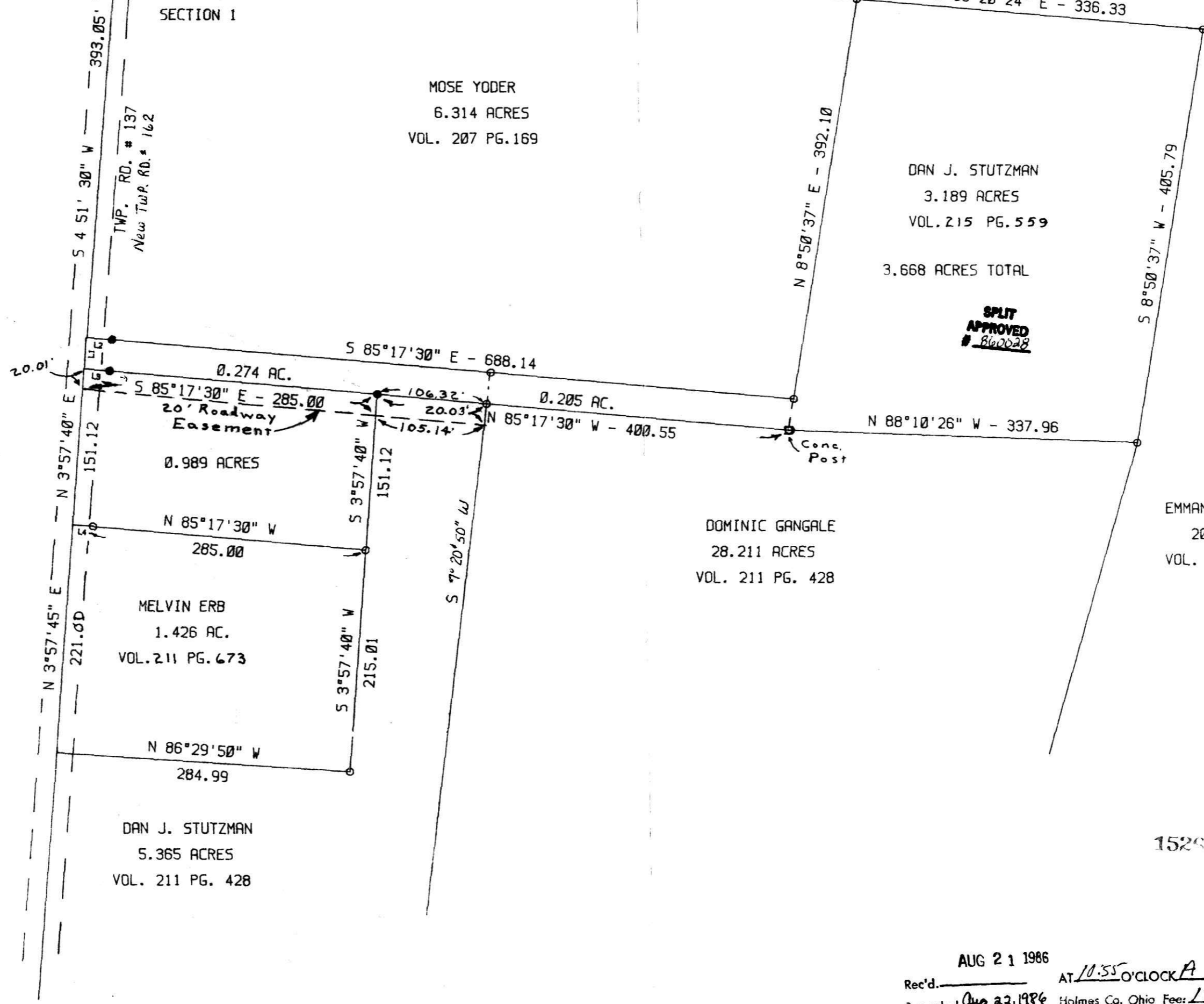
Holmes Limestone Co.
17.84 Ac.
V. 106 P. 801

3.668 acres

This plat approved for residential
wastewater.

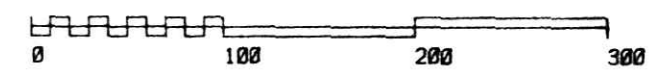
Mat Miller
Sanitarian

7-2-86
Date



PYLE SURVEYING
116 SOUTH BROADWAY
NEW PHILADELPHIA, OHIO
44663

- DENOTES IP SET 5/8" W. Cap.
 - DENOTES IP FOUND
- BEARINGS ORIENTED TO, S. 365 Ac. Tr.
DOCUMENTS USED WERE DEEDS, VOL. & PGS. AS SHOWN



I HEREBY CERTIFY THIS PLAT IS TRUE AND
CORRECT TO THE BEST OF MY KNOWLEDGE AND BELIEF

John P. Pyle
REGISTERED SURVEYOR

SURVEY FOR DAN J. STUTZMAN
NE 1/4 SEC. 1 T-8, R-5

SCALE: 100 FEET/INCH	APPROVED BY: J P P	DRAWN BY:
DATE: 6-11-86		REVISED BY:

WALNUTCREEK TWP.
HOLMES CO. OHIO

AUG 21 1986
Rec'd. _____ AT 10:55 O'CLOCK A
Recorded Aug 23, 1986 Holmes Co. Ohio Fees: 17.40
Plot Vol. 11 Pg. 98 Recorder: Richard H. Evans
Deed Vol. 232 Pg. 84