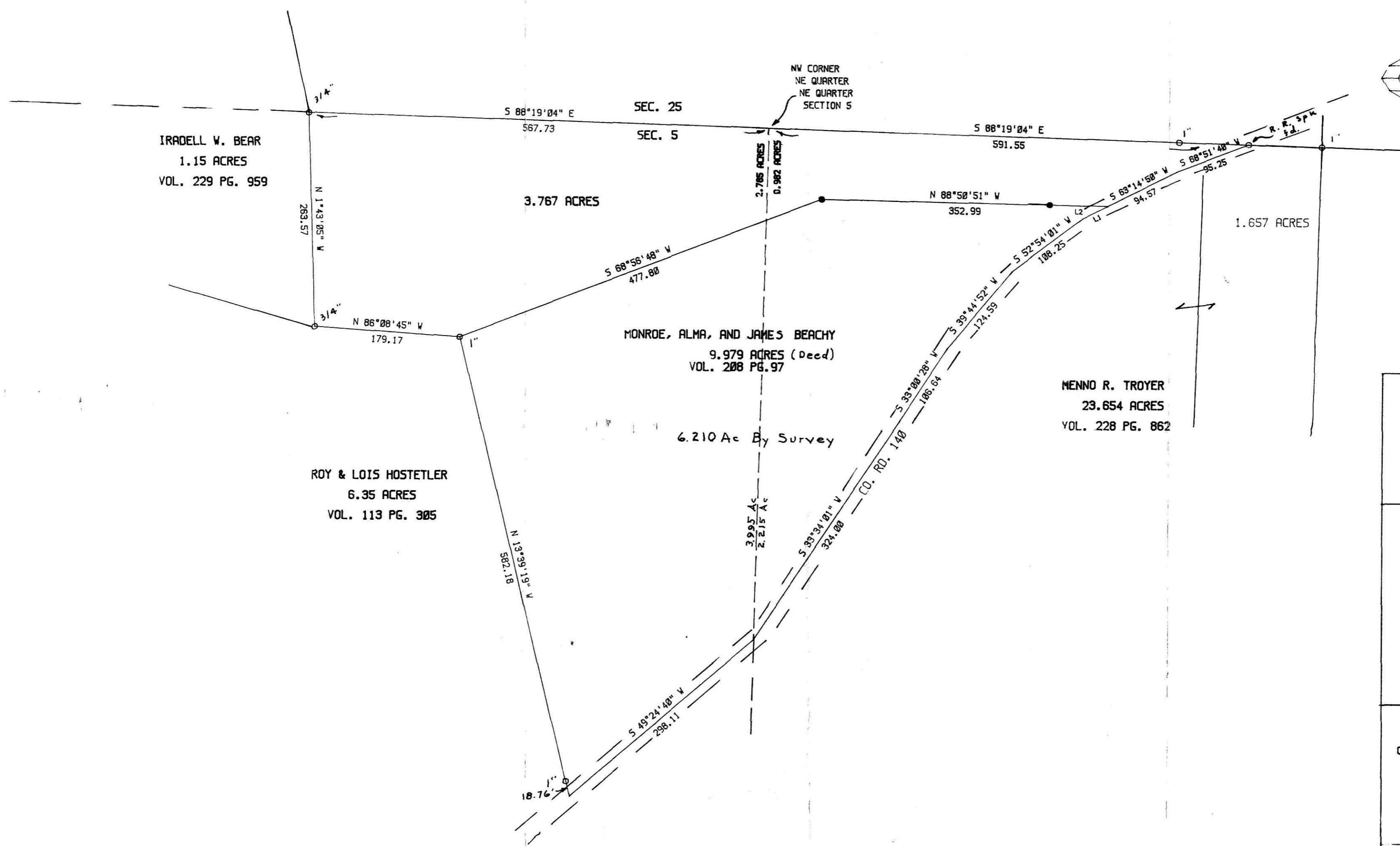
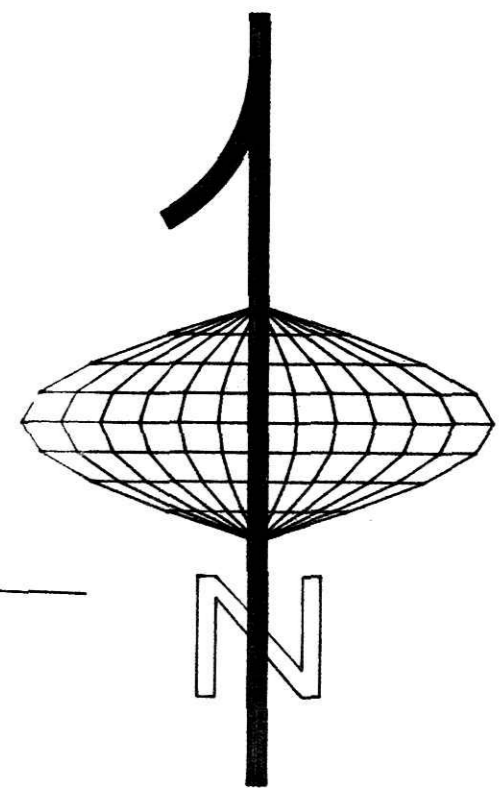


151581



IRA DELL W. BEAR
1.15 ACRES
VOL. 229 PG. 959

3.767 ACRES

NW CORNER
NE QUARTER
NE QUARTER
SECTION 5

MONROE, ALMA, AND JAMES BEACHY
9.979 ACRES (Deed)
VOL. 208 PG. 97

6.210 Ac By Survey

ROY & LOIS HOSTETLER
6.35 ACRES
VOL. 113 PG. 305

MENNO R. TROYER
23.654 ACRES
VOL. 228 PG. 862

1.657 ACRES

LINE	BEARING	DISTANCE
L1	S 63°30'44" W	35.48
L2	N 88°50'50" W	71.87

151581
REC'D. MAY 27 1986
AT 3:11 o'clock PM
RECORDED May 28, 1986
Plat VOL 11 PG. 77
Holmes Co. Ohio Fee: 15.75
Richard Shaver Recorder
DEED VOL 231- PG. 252

PYLE SURVEYING
116 SOUTH BROADWAY
NEW PHILADELPHIA, OHIO
44663

● DENOTES IP SET 5/8 w. cap
○ DENOTES IP FOUND
BEARINGS ORIENTED TO; N. Line Sec. 5
DOCUMENTS USED WERE DEEDS, VOL. & PGS. AS SHOWN

I HEREBY CERTIFY THIS PLAT IS TRUE AND
CORRECT TO THE BEST OF MY KNOWLEDGE AND BELIEF

John P Pyle

SURVEY FOR JAMES BEACHY
NE 1/4 SEC 5 T-8,R-4

SCALE: 100 FEET/INCH	APPROVED BY: J P P	DRAWN BY:
DATE: 5-3-86		REVISED BY:

WALNUTCREEK TWP. HOLMES CO. O.

PAGE NO. 1 DRAWING NO. 1