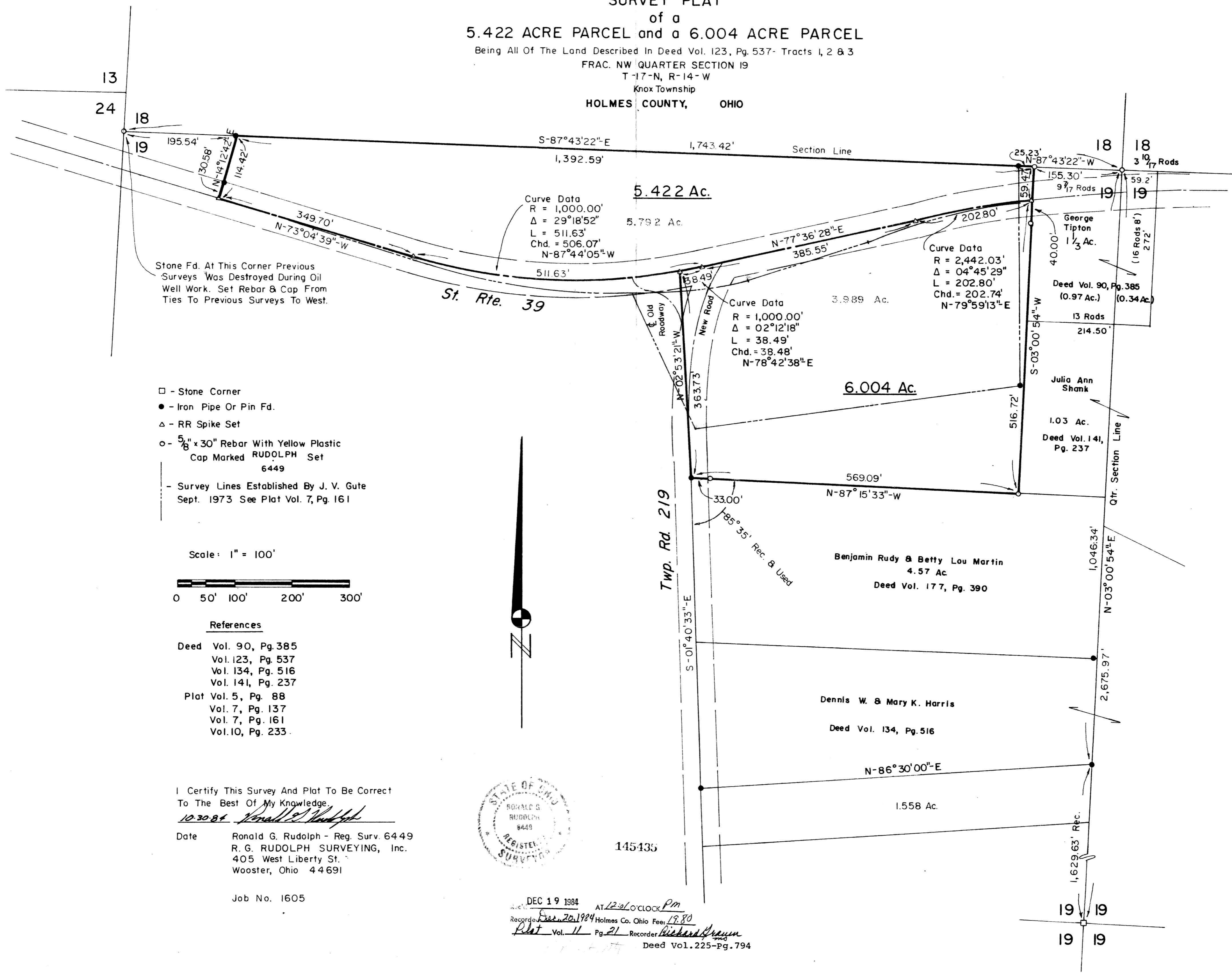


145435

SURVEY PLAT

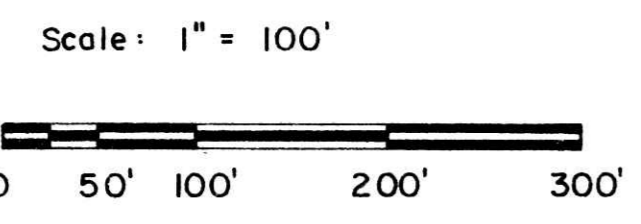
of a 5.422 ACRE PARCEL and a 6.004 ACRE PARCEL

Being All Of The Land Described In Deed Vol. 123, Pg. 537- Tracts 1, 2 & 3  
FRAC. NW QUARTER SECTION 19  
T-17-N, R-14-W  
Knox Township  
HOLMES COUNTY, OHIO



Stone Fd. At This Corner Previous Surveys Was Destroyed During Oil Well Work. Set Rebar & Cap From Ties To Previous Surveys To West.

- - Stone Corner
- - Iron Pipe Or Pin Fd.
- △ - RR Spike Set
- - 5/8" x 30" Rebar With Yellow Plastic Cap Marked RUDOLPH Set 6449
- Survey Lines Established By J. V. Gute Sept. 1973 See Plat Vol. 7, Pg. 161



- References**
- Deed Vol. 90, Pg. 385
  - Vol. 123, Pg. 537
  - Vol. 134, Pg. 516
  - Vol. 141, Pg. 237
  - Plat Vol. 5, Pg. 88
  - Vol. 7, Pg. 137
  - Vol. 7, Pg. 161
  - Vol. 10, Pg. 233

I Certify This Survey And Plat To Be Correct To The Best Of My Knowledge.

*10-30-84 Ronald G. Rudolph*

Date Ronald G. Rudolph - Reg. Surv. 6449  
R. G. RUDOLPH SURVEYING, Inc.  
405 West Liberty St.  
Wooster, Ohio 44691



145435

DEC 19 1984 AT 12:00 O'CLOCK P.M.  
Recorded Dec 20, 1984 Holmes Co. Ohio Fee: 17.80  
Plat Vol. 11 Pg. 21 Recorder Richard Grayson  
Deed Vol. 225-pg. 794

Job No. 1605