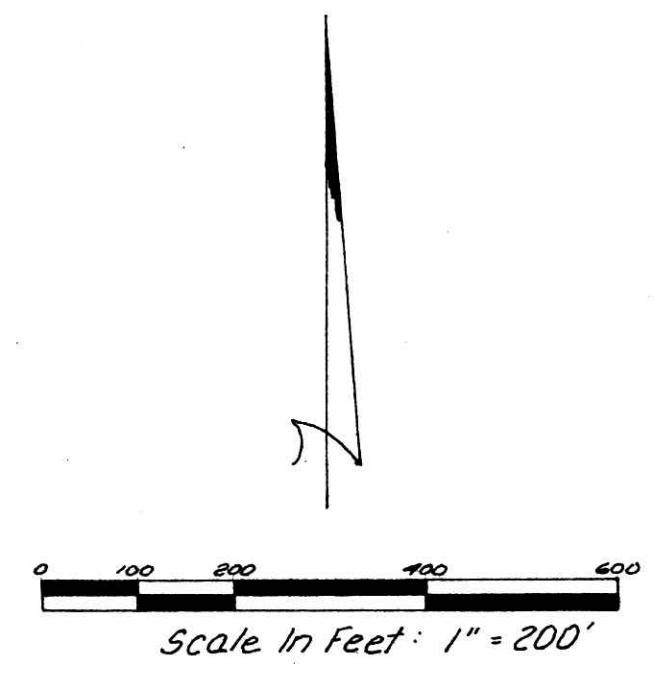
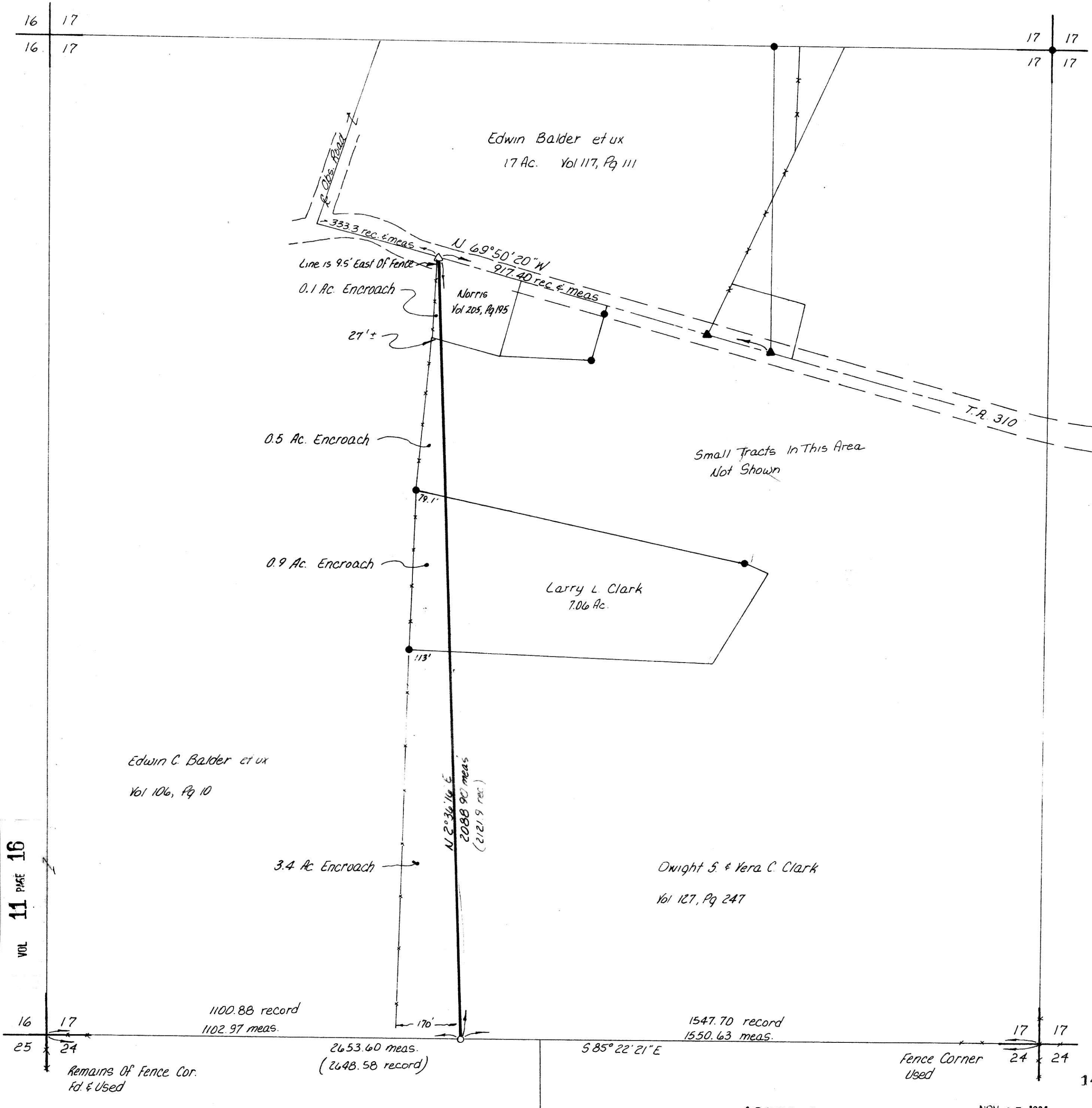


145057

HARDY TOWNSHIP
HOLMES COUNTY, OHIO
SW QTR. SECTION 17, T-9N, R-6W



- I.P. Found
- I.P. Set - 5/8" Bar With Yellow Cap Marked "LDNB-6505"
- ▲ RR Spike Found
- △ RR Spike Set

Bearings Relative To Survey By Me
N. Of T.R. 310 Dated 6-15-82

References:
Plat Vol 7, Pg 501
My Survey N. Of T.R. 310 Dtd. 6-15-82
Deeds As Shown
Tax Map

Survey For Edwin Balder To Mark The Line Between
Balder & Clark As The Deeds Define It. The Obvious Line
Of Occupation Is The Fence Line Shown.

3' Lath Marked Balder-Clark Property Line Are Set On Line

I Certify This Plat To Be Correct To The Best Of My Knowledge
William H. Long October 27, 1983

William H. Long R.S. 6505
RD 1, Box 69A
Big Prairie, Ohio 44611

APPROVED BY
TAX MAP OFFICE
Date 11/15/84 lg

NOV 15 1984
Rec'd. Nov 15 1984 AT 9:05 O'CLOCK Am
Recorded Nov 15 1984 Holmes Co. Ohio Fee 19.55
Plat Vol. 11 Pg 16 Recorder Richard
23X17 X 5

MAP OFFICE COPY