

MAP OFFICE COPY

NORTH BASED ON DEEDS 206/281 & 206/395

LOT LINE LOT 5 LOT 4 P.O.B.

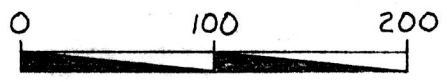
SPLIT APPROVED # 880049

LAREY D. FAIR, et al 172/227, 215/657

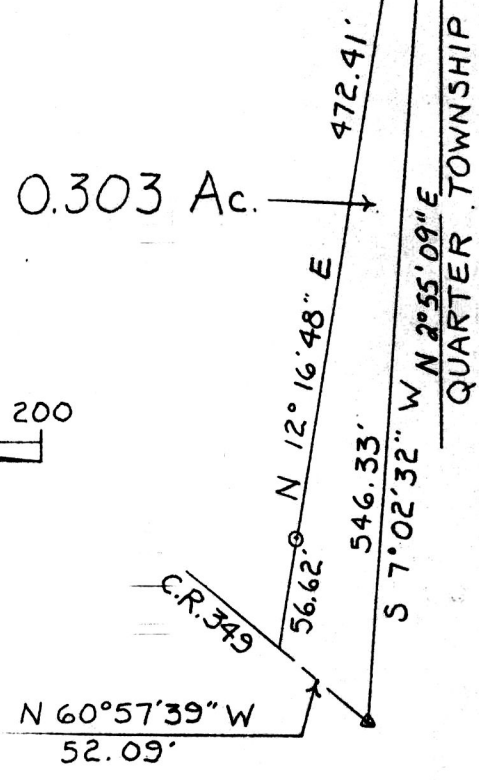
(0.303 Ac.)

This plat not approved for any use that generates wastewater.

Sanitarian Date 4-5-88



0.303 Ac.



LOT 28 1ST QTR.

DAVID GAMERTSFELDER 206/281 206/395

- o = Set 3/4" X 30" Reinforcing bar with aluminum cap
● = Recovered 1/2" steel pin
v = Recovered railroad spike

Research Basis:

Deeds: 172/227 215/657 206/281 206/395

Plat: 8/443

Boundary Survey for David Gamertsfelder in Lot 4, Second Quarter Range 7W, Township 9N Hardy Township Holmes County Deed Vol. 238 Page 742 Ohio

159426 APR 13 1988 REC'D AT 2:53 O'CLOCK P.M. RECORDED April 14, 1988 Plat VOL 10 PG 936 Holmes Co. Ohio Fee: 5.00 Richard Brown Recorder Sam

Scale: 1" = 100' July 22, 1987

