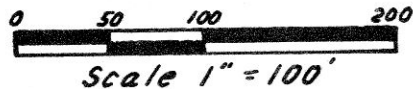


HARDY TOWNSHIP  
HOLMES COUNTY, OHIO  
S.E. QTR., SEC. 14, T-9N, R-6W

159053



Jon Fielitz  
Vol. 233, Pg. 336

Curve A  
 $\Delta = 75^{\circ}11'18''$   
 $R = 120.00'$   
 $L = 157.47'$   
 $Ch. = 146.42'$   
 $Ch. Brg. N 46^{\circ}39'05'' E$

Curve B  
 $\Delta = 0^{\circ}06'29''$   
 $R = 11459.16'$   
 $L = 21.62'$   
 $Ch. = 21.62'$   
 $Ch. Brg. = S 80^{\circ}59'49'' E$

- Stone Found
- ▲ RR. Spike Found
- Iron Pin Found
- Iron Pin Set - 5/8" Re-Bar With Yellow Cap Marked "LONG 7115".



Bearings From  
Plat Vol. 10 Pg. 650

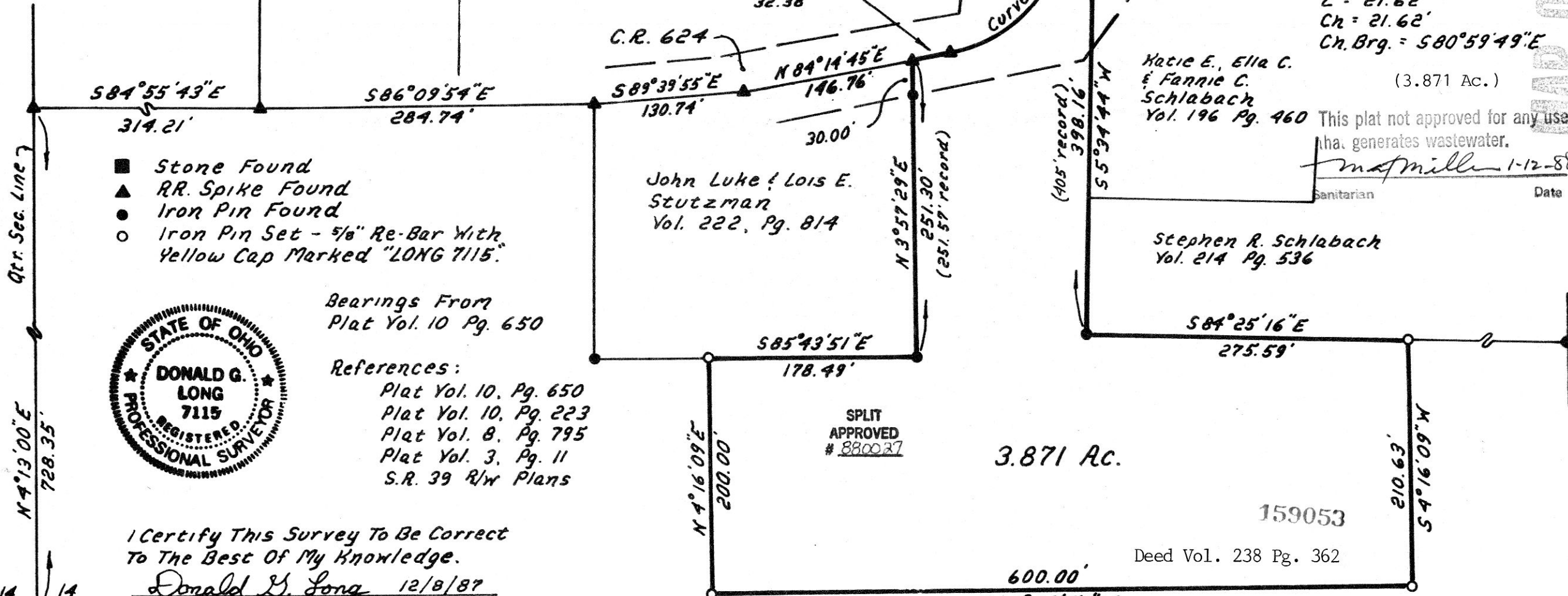
- References:
- Plat Vol. 10, Pg. 650
  - Plat Vol. 10, Pg. 223
  - Plat Vol. 8, Pg. 795
  - Plat Vol. 3, Pg. 11
  - S.R. 39 R/w Plans

I Certify This Survey To Be Correct  
To The Best Of My Knowledge.

Donald G. Long 12/8/87  
 Donald G. Long P.S. 7115  
 Long Surveying Inc.  
 13301 T.R. 503  
 Big Prairie, Ohio, 44611

Grantor:  
 Ura B. & Clara Miller  
 Deed Vol. 149, Pg. 232

MAR 8 1988  
 Rec'd. MAR 9 1988  
 Recorded Plat Vol. 10 Pg. 917  
 AT 4:08 O'clock P.M.  
 Holmes Co. Ohio Fee: 5.00  
 Recorder: Richard Tharen



TEMP OFFICE COPY