

HARDY TOWNSHIP  
HOLMES COUNTY, OHIO  
LOT 11, 3RD QTR. T-9N, R-7W



Bearings Assumed

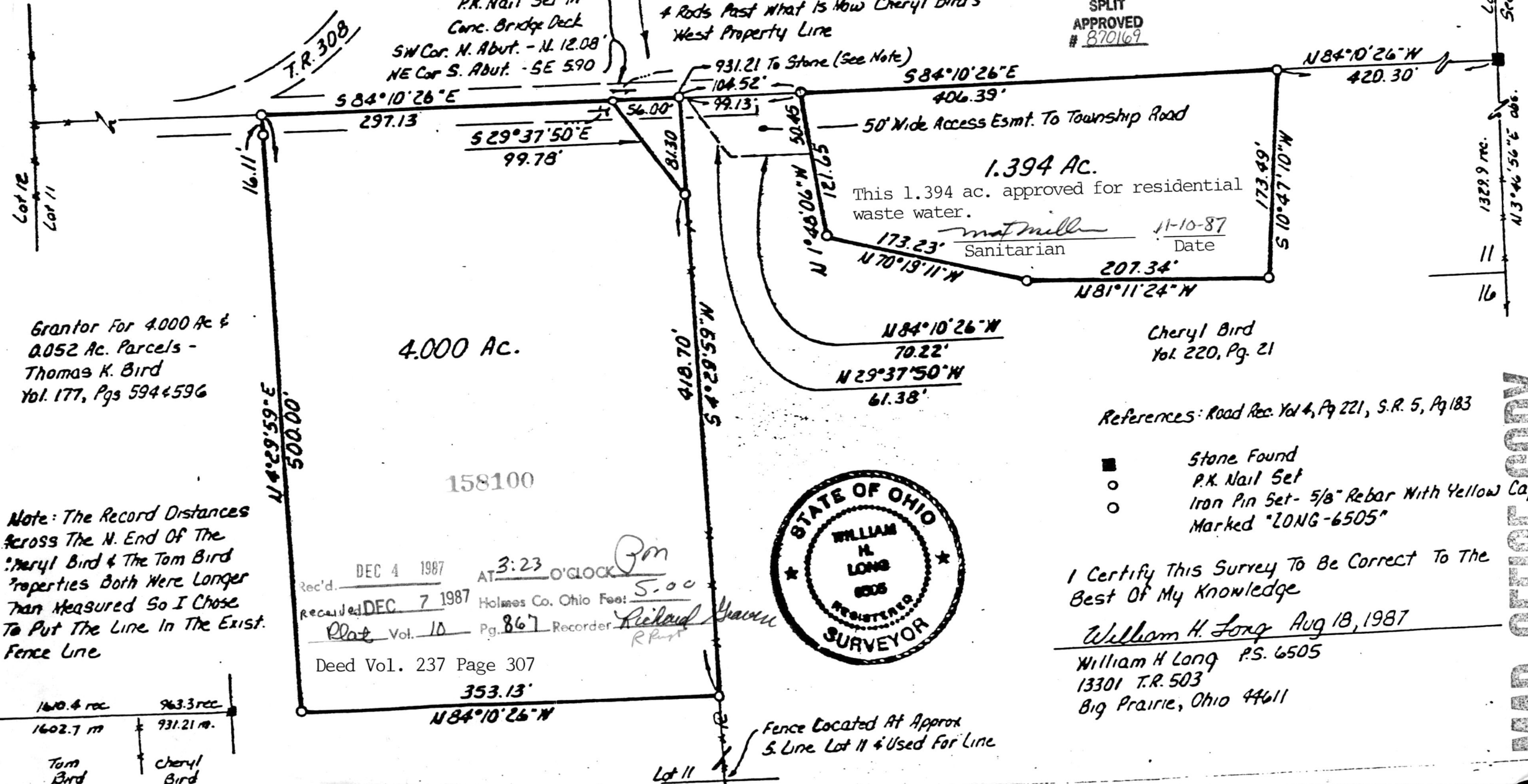
158100  
Triangular Parcel Is A 0.052 Ac Parcel  
To Transfer From Tom Bird To Cheryl Bird  
For Access.

Road Record Vol 4, Pg 221 States  
That The Township Road Exists  
& Rods Past What Is Now Cheryl Bird's  
West Property Line

Raymond A. & Marjorie K. Bird  
Vol. 123, Pg. 272

SPLIT  
APPROVED  
# 870169

P.K. Nail Set In  
Cone. Bridge Deck  
SW Cor. N. Abut. - N. 12.08'  
NE Cor S. Abut. - SE 590'



Grantor For 4.000 Ac &  
0.052 Ac. Parcels -  
Thomas K. Bird  
Vol. 177, Pgs 594 & 596

4.000 Ac.

1.394 Ac.  
This 1.394 ac. approved for residential  
waste water.

*mat mill* 11-10-87  
Sanitarian Date

Cheryl Bird  
Vol. 220, Pg. 21

References: Road Rec. Vol 4, Pg 221, S.R. 5, Pg 183

- Stone Found
- P.K. Nail Set
- Iron Pin Set- 5/8" Rebar With Yellow Cap
- Marked "LONG-6505"

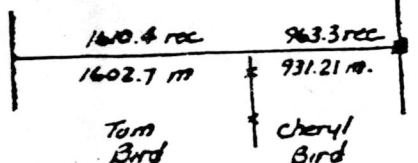
Note: The Record Distances  
Across The N. End Of The  
Cheryl Bird & The Tom Bird  
Properties Both Were Longer  
Than Measured So I Chose  
To Put The Line In The Exist.  
Fence Line

Rec'd. DEC 4 1987 AT 3:23 O'CLOCK  
Revised DEC 7 1987 Holmes Co. Ohio Fee: 5.00  
Plat Vol. 10 Pg. 867 Recorder: Richard Yarrow



I Certify This Survey To Be Correct To The  
Best Of My Knowledge

William H. Long Aug 18, 1987  
William H Long P.S. 6505  
13301 T.R. 503  
Big Prairie, Ohio 44611



Fence Located At Approx  
S. Line Lot 11 & Used For Line

MAP OFFICE COPY