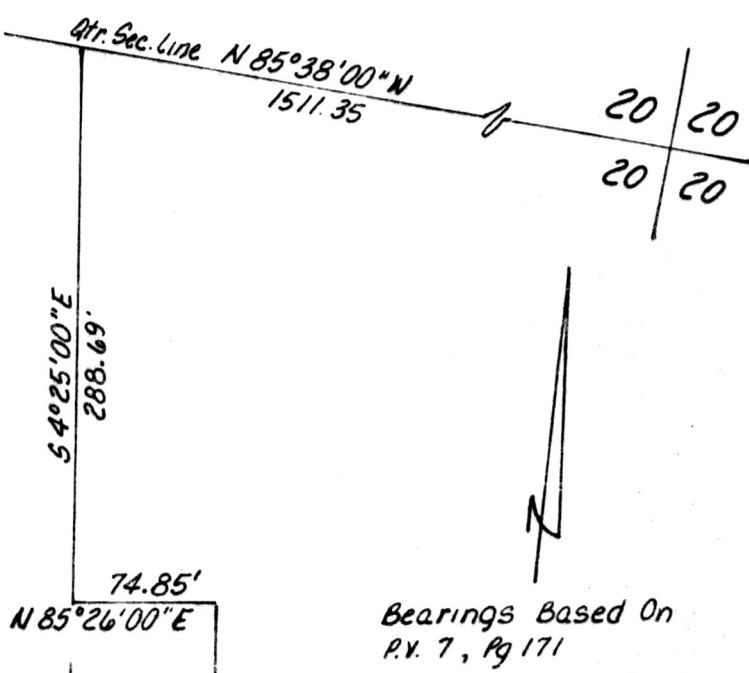


WALNUT CREEK TOWNSHIP
HOLMES COUNTY, OHIO
SW Qtr Sec. 20, T-9N, R-5W



- I.P. Found
- I.P. Set - 5/8" Rebar With Yellow Cap Marked "LONG-6505"

References: P.V. 5, Pg 54
 P.V. 7, Pg 171
 P.V. 4, Pg 118
 Survey Of 0.353 Ac Schlachach Parcel By Sellner - Oct 1970



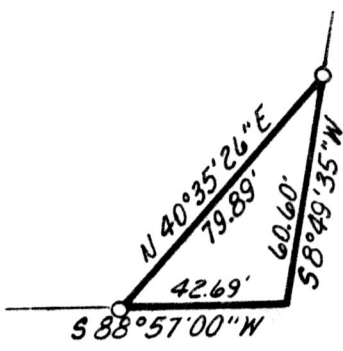
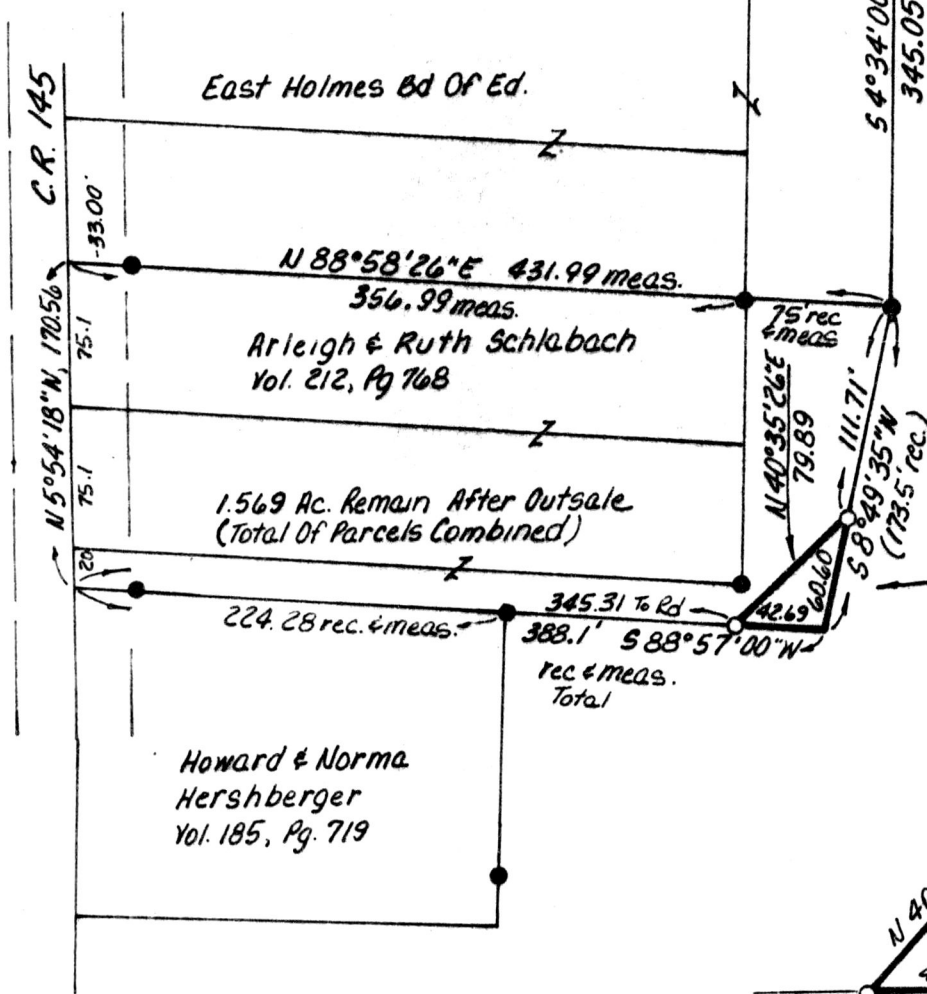
SPLIT APPROVED # 870124

(0.029 Ac.)

This plat not approved for any use that generates wastewater.
Max Miller 8-21-87
 Sanitarian TM Date

Walnut Hills Nursing Home Inc. Vol. 175, Pg 79 & Vol. 185, Pg 171

0.029 Ac. To Be Transferred To Walnut Hills Nursing Home Inc.



DETAIL

MAP OFFICE COPY

I Certify This Survey To Be Correct To The Best Of My Knowledge

William H. Long July 13, 1987
 William H. Long P.S. 6505
 13301 T.R. 503
 Big Prairie, Ohio 44611

Deed Vol. 236 Page 398
 157197
 SEP 8 1987
 Rec'd. AT 12:55 O'CLOCK a.m.
 Recorded SEP 8 1987 Holmes Co. Ohio Fee 5.00
 Plat Vol. 10 Pg. 816 Recorder *Richard Drasen*

