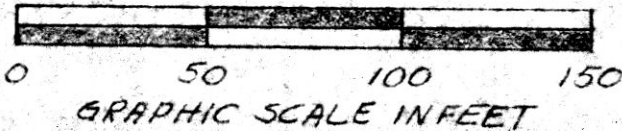
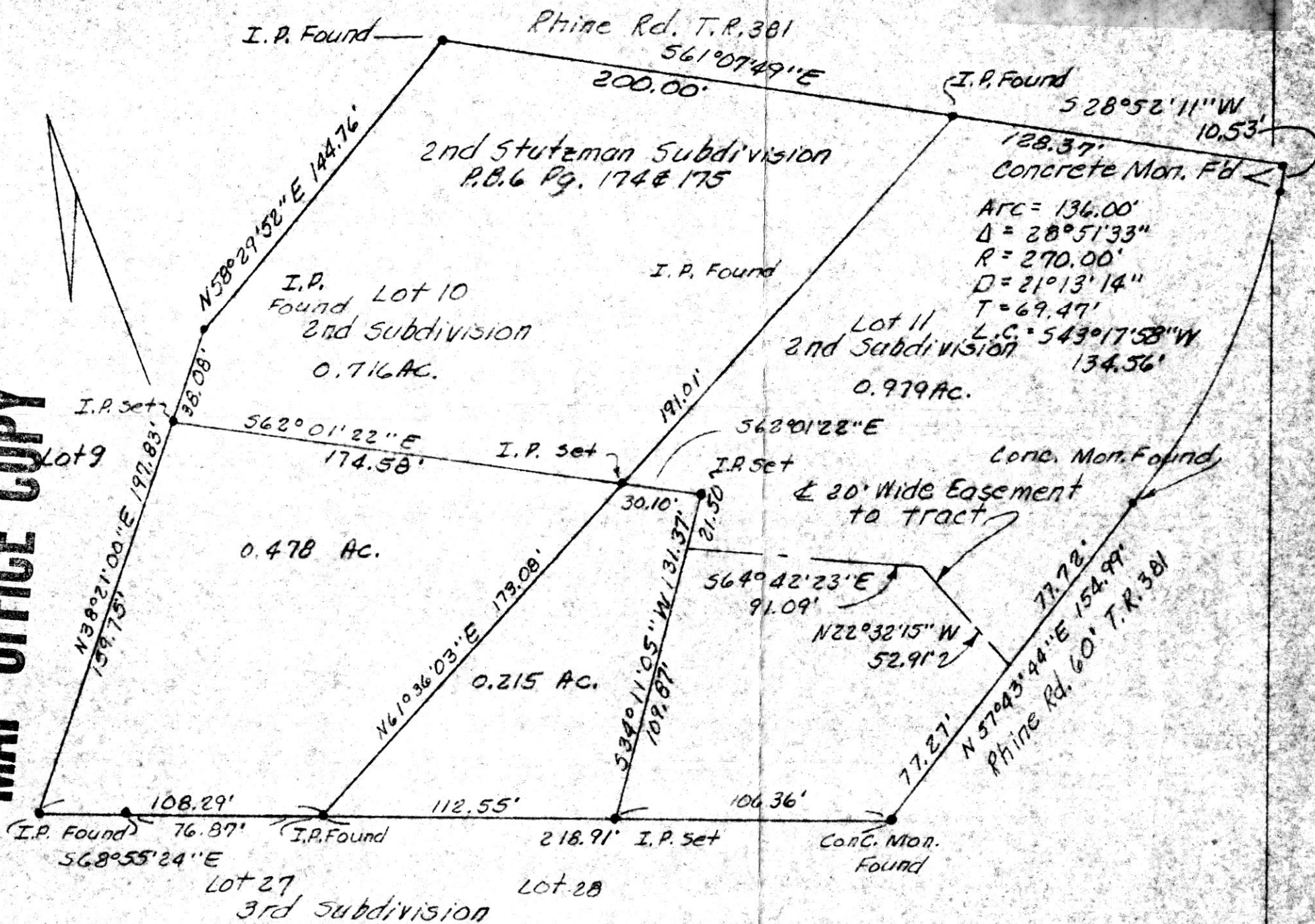


MAP OFFICE COPY



This 0.716 Ac. plat is not approved for an on site wastewater system. It is approved for wastewater discharge to the Stutzman Wastewater Plant.

mat mill
Sanitarian

8-12-87
Date



157067

Known as part of Lots 10 & 11 of Stutzman's second subdivision as per P.B. 6 Pg. 174 & 175. Located in Lot 21, 1st QTR., TWP. 9N, R. 6W of Berlin TWP, Hol. Co., Ohio.

Robert L. Kasner P.S. 5193
P.E. 28820

AUG 24 1987
Rec'd.
Recorded AUG 25 1987

AT 3:08 O'CLOCK PM

Holmes Co. Ohio Fee: 5.00 Deed Vol. 236 Page 272

Plat Vol. 10

Pg. 805 Recorder *Richard Haven*

Phill