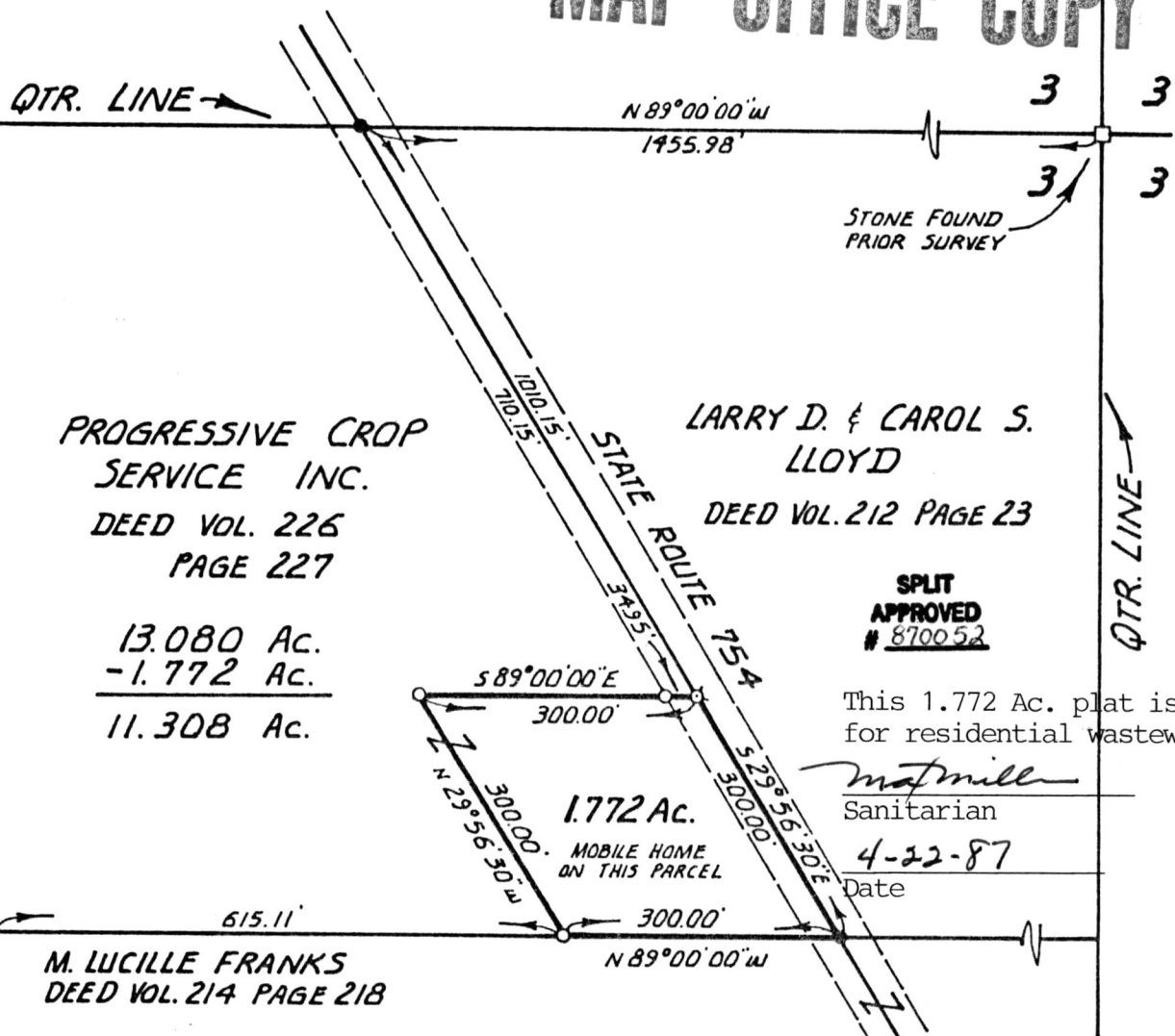


# RIPLEY TOWNSHIP

S.W. QTR. SEC. 3, T-17N:R-14W  
HOLMES COUNTY, OHIO

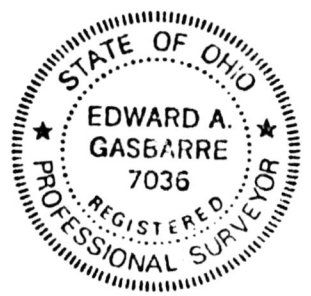
## MAP OFFICE COPY

156008 Deed vol. 235 Page 218  
AT 2:13 O'CLOCK  
Holmes Co. Ohio Fee: \$1.00  
Pg. 142 Recorder Richard Weaver  
Rec'd. MAY 20 1987  
Recorded MAY 21 1987  
Plat Vol. 10  
Sam



- — No. 5 RE-BAR SET (30" LONG) WITH I.D. CAP.
- ☒ — P.K. NAIL SET
- — IRON PIN FOUND
- — STONE FOUND

NOTE: BEARINGS ARE COMMON TO PRIOR SURVEY PERFORMED BY US AND COMPLETED 10-24-84. ON FILE AT HOLMES CO. TAX MAP OFFICE.



I CERTIFY THIS PLAT TO BE CORRECT TO THE BEST OF MY KNOWLEDGE.

Edward A. Gasbarre  
EDWARD A. GASBARRE P.S. 7036  
R.W. GASBARRE & ASSOCIATES INC.  
SURVEYING & MAPPING  
P.O. BOX 44 (401 S. MARKET ST.)  
WOODSTER, OHIO 44691  
PH. (216) 264-9499

COMPLETED: 11<sup>TH</sup> DEC. 1986