

SURVEY PLAT of a 2.419 ACRE PARCEL

SE QUARTER of SECTION 30
T-18-N, R-14-W

Ripley Township
HOLMES COUNTY, OHIO

MAP OFFICE COPY

Grantor: Melvin And Darlene Hollingsworth
Deed Vol. 174, Pg. 506

References

Plat Vol. 4, Pg. 64
Plat Vol. 7, Pg. 523
Plat Vol. 8, Pg. 183

Deed Vol. 234 Pg. 866
155609 APR 16 1987

REC'D. _____
AT 2:16 O'CLOCK PM
RECORDED April 17, 1987
Plat VOL 10 PG. 724
Holmes Co. Ohio Fee: 5.00
Rudolph Rudolph Recorder

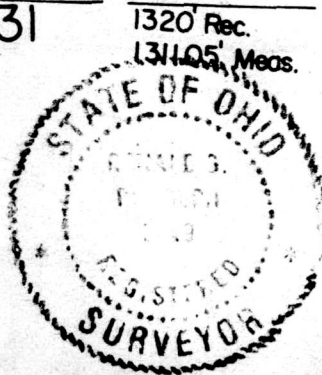
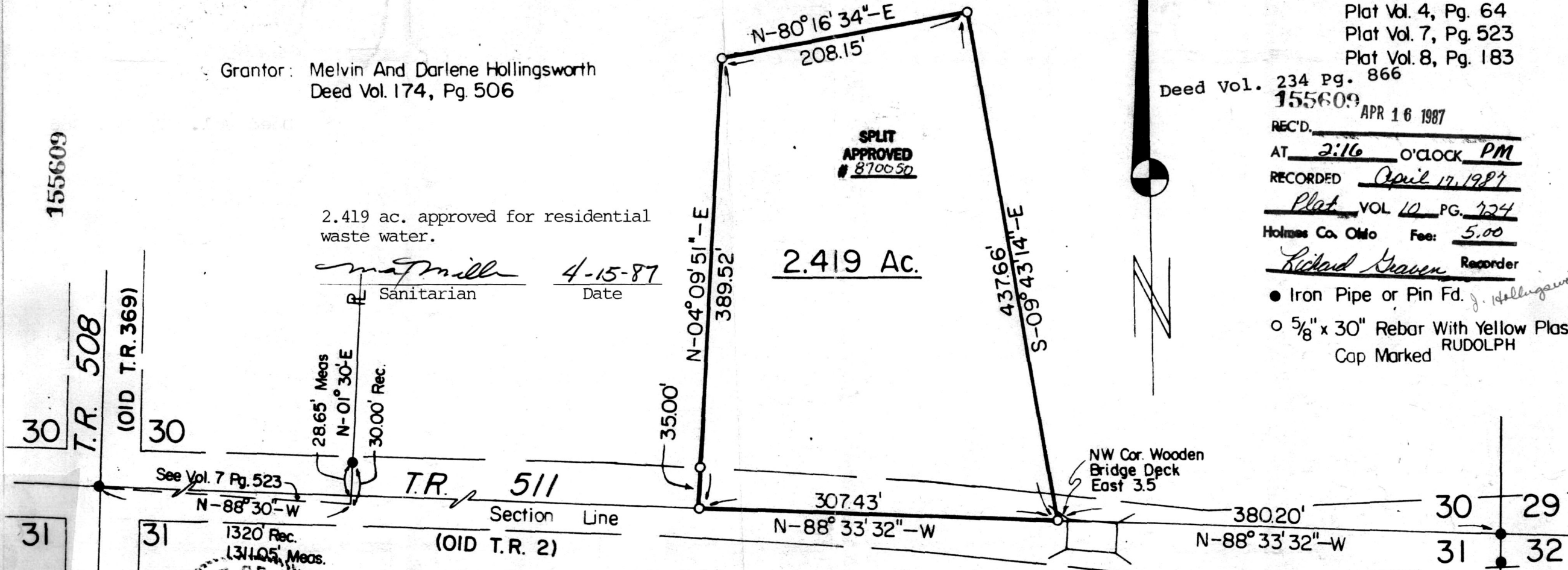
- Iron Pipe or Pin Fd. *J. Hollingsworth*
- 5/8" x 30" Rebar With Yellow Plastic Cap Marked RUDOLPH

2.419 ac. approved for residential waste water.

mat mill 4-15-87
Sanitarian Date

SPLIT APPROVED
870050

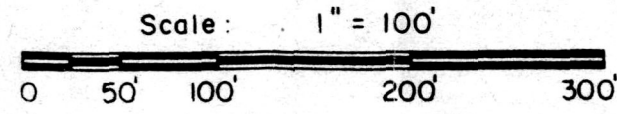
2.419 Ac.



I Certify This Survey And Plat To Be Correct To The Best Of My Knowledge.

Date _____
Ronald G. Rudolph P.S. No. 6449
R.G. RUDOLPH SURVEYING, Inc.
405 W. Liberty St.
Wooster, Ohio 44691

Job No. 2630



VOL 10 PAGE 724

155609

T.R. 508

(OID T.R. 369)

T.R. 511

(OID T.R. 2)

T.R. 29
T.R. 32