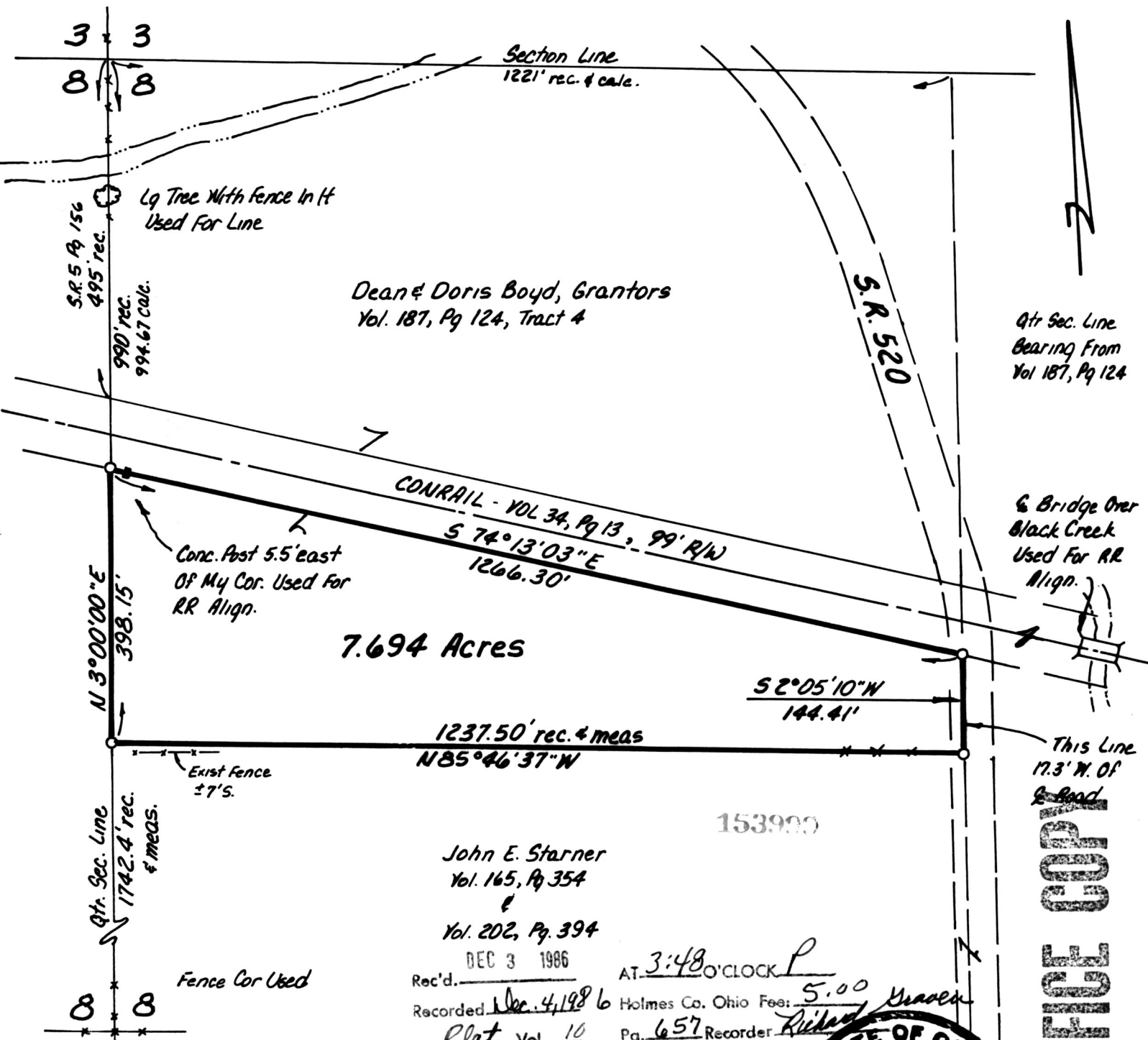


KILLBUCK TOWNSHIP
 HOLMES COUNTY, OHIO
 NE QTR. SECTION 8, T-8N, R-8W

153999

o Iron Pin Set - 5/8" Rebar
 With Yellow Cap Marked
 "LONG-6505"

References: WCL 10 PAGE 657
 Surv. Rec. 5, Pg 156
 Deeds As Shown



Dean & Doris Boyd, Grantors
 Vol. 187, Pg 124, Tract 4

7.694 Acres

John E. Starner
 Vol. 165, Pg 354
 Vol. 202, Pg 394

Rec'd. DEC 3 1986 AT 3:48 O'CLOCK
 Recorded Dec. 4, 1986 Holmes Co. Ohio Fee: 5.00
 Plat Vol. 10 Pg. 657 Recorder: Richard [Signature]

Deed Vol. 233 Pg. 509
 I Certify This Survey To Be Correct To The
 Best Of My Knowledge

William H. Long Nov. 21, 1986
 William H. Long R.S. 6505
 13301 T.R. 503
 Big Prairie, Ohio, 44611



MHP OFFICE COPY

Qtr Sec. Line
 Bearing From
 Vol 187, Pg 124

6 Bridge Over
 Black Creek
 Used For RR
 Align.

This Line
 17.3' W. Of
 Road