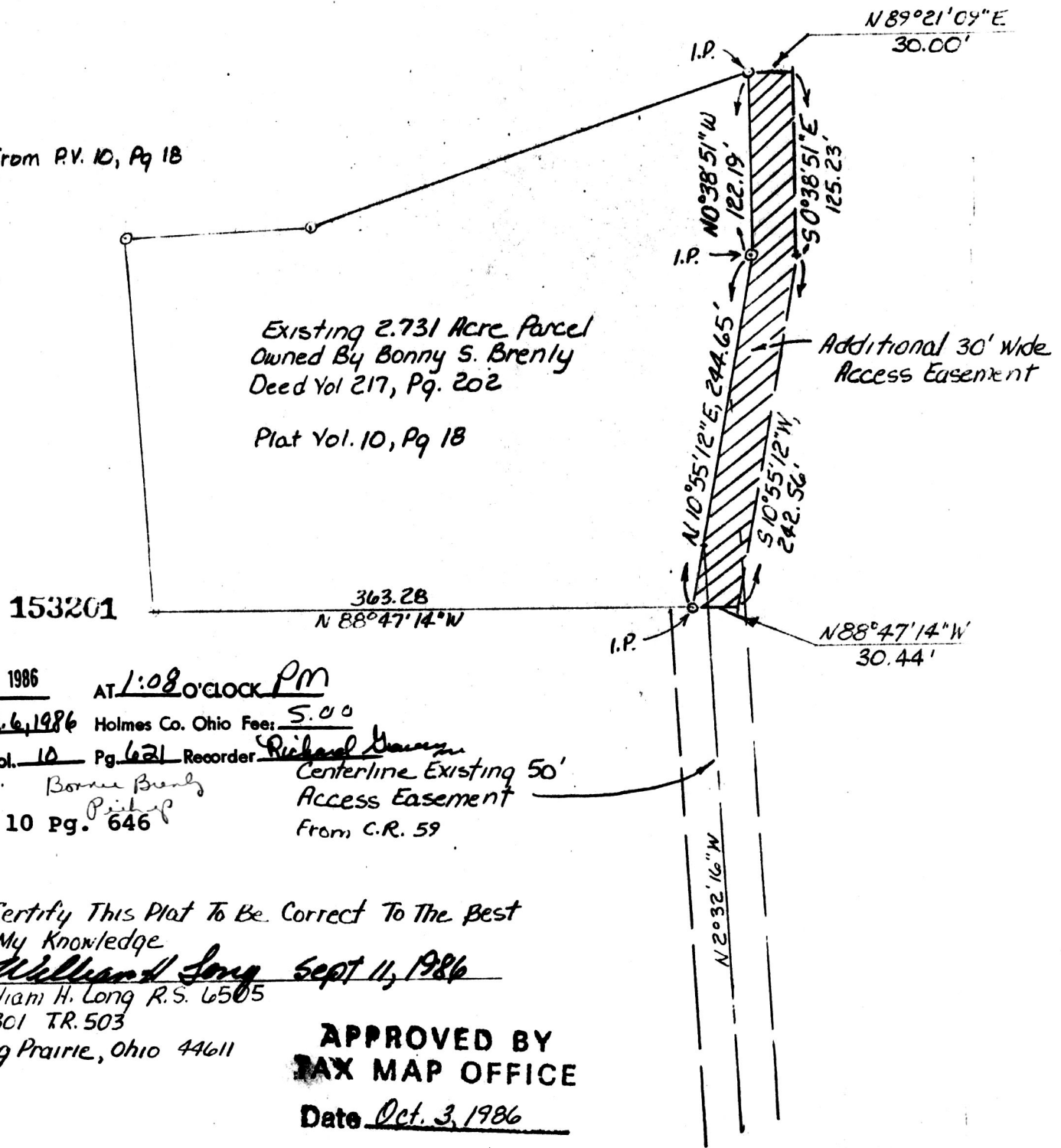


PLAT OF AN ADDITIONAL 30 FOOT WIDE ACCESS EASEMENT TO BE GRANTED TO BONNY S. BRENLBY BY RONALD & MARIE BRENLBY (Vol. 173, Pg 568)

MECHANIC TOWNSHIP
HOLMES COUNTY, OHIO
NE QTR. SEC. 21, T-8N, R-6W

MAP OFFICE COPY

Bearings From P.V. 10, Pg 18



Rec'd. OCT 3 1986 AT 1:08 O'CLOCK PM
 Recorded Oct. 6, 1986 Holmes Co. Ohio Fee: 5.00
Plat Vol. 10 Pg. 621 Recorder Richard Hays
 Deed Vol. 10 Pg. 646 Bonny Brenly Richard Hays
Pickup Centerline Existing 50' Access Easement From C.R. 59

I Certify This Plat To Be Correct To The Best Of My Knowledge
William H. Long Sept 11, 1986
 William H. Long R.S. 6505
 13301 TR. 503
 Big Prairie, Ohio 44611

APPROVED BY
 TAX MAP OFFICE
 Date Oct. 3, 1986