

153107

SURVEY PLAT of a 28.650 ACRE PARCEL

SW QUARTER of SECTION 4

T-9-N, R-6-W

Hardy Township

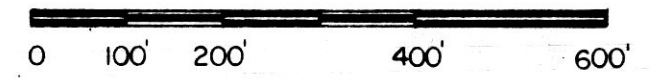
HOLMES COUNTY, OHIO

Grantor: HOLMES LIMESTONE CO.
Deed Vol. 226, Pg. 784

Stone Corner Fd. With Ring Of Flat Stones On Edge Around.

- Stone Corner Fd.
- Iron Pipe Or Pin Fd.
- 5/8" x 30' Rebar With Yellow Plastic Cap Marked RUDOLPH Set 6449

Scale: 1" = 200'



References

- Deed Vol. 226, Pg. 784
- Plat Vol. 3, Pg. 40
- Plat Vol. 7, Pg. 736
- Plat Vol. 8, Pg. 873

I Certify This Survey And Plat To Be Correct To The Best Of My Knowledge.

82286 Ronald G. Rudolph
 Date Ronald G. Rudolph P.S. No. 6449
 R.G. RUDOLPH SURVEYING, Inc.
 405 W. Liberty St.
 Wooster, Ohio 44691

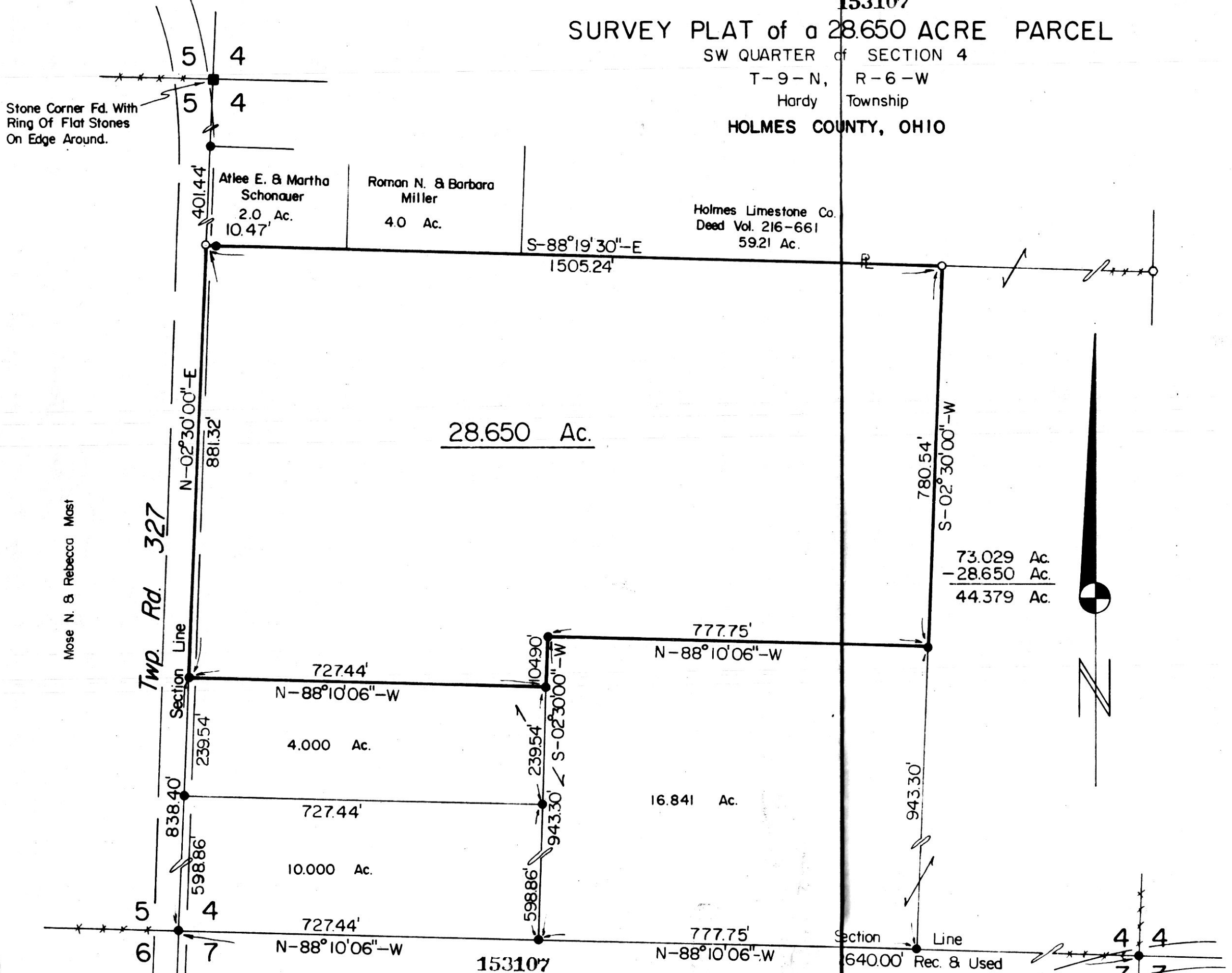
Job No. 2306



MAP OFFICE COPY

VOL. 10 PAGE 617

10.80
18x12



rec'd. SEP 26 1986 AT 2:02 O'CLOCK PM
 Recorded Sept. 29, 1986 Holmes Co. Ohio Fees 10.80
 Plat Vol. 10 Pg. 617 Recorder Richard Mason
 Laurel Deed Vol. 232 Pg. 548

T.R. 331

Section Line
640.00' Rec. & Used