

SALT CREEK TOWNSHIP PART OF LOT 10 (T-10N:R-5W) 3RD QUARTER HOLMES COUNTY OHIO



SCALE: 1" = 100'



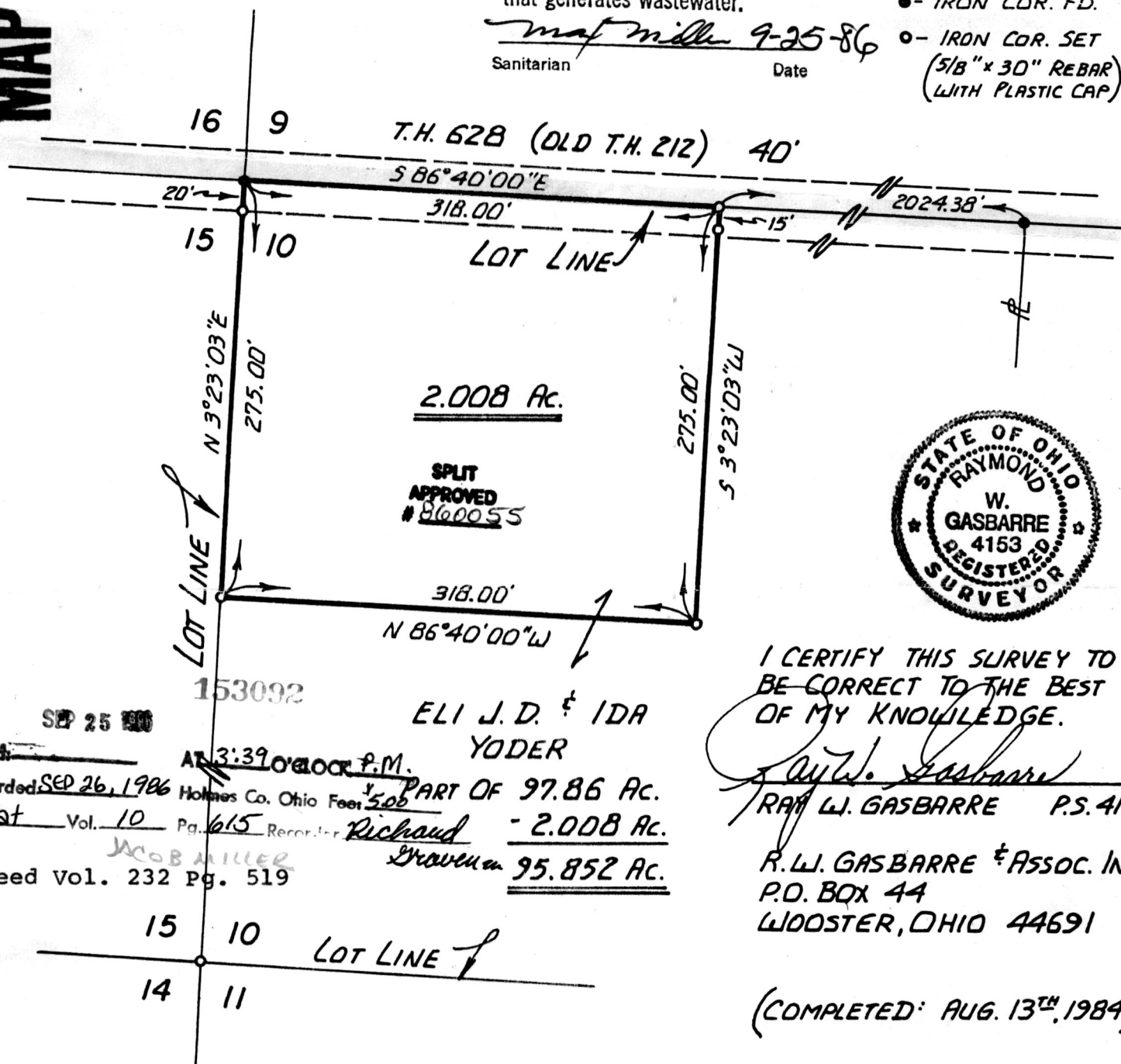
(2.008 acres)

This plat not approved for any use that generates wastewater.

mat miller 9-25-86
Sanitarian Date

- - IRON COR. FD.
- - IRON COR. SET (5/8" x 30" REBAR WITH PLASTIC CAP)

MAP OFFICE COPY



I CERTIFY THIS SURVEY TO BE CORRECT TO THE BEST OF MY KNOWLEDGE.

Ray W. Gasbarre
RAY W. GASBARRE P.S. 4153

R.W. GASBARRE & ASSOC. INC.
P.O. BOX 44
WOOSTER, OHIO 44691

(COMPLETED: AUG. 13TH, 1984)

SEP 25 1986
 Rec'd: AT 3:39 O'CLOCK P.M.
 Recorded SEP 26, 1986 Holmes Co. Ohio Fees 5.00
 Plat Vol. 10 Pg. 615 Recorder Richard - 2.008 Ac.
 Deed Vol. 232 Pg. 519
WOB MILLER
 Drawn 95.852 Ac.

ELI J. D. & IDA
YODER

153092

PART OF 97.86 AC.
- 2.008 AC.
Drawn 95.852 AC.