



BASE OF BEARINGS
TRUE NORTH BY SUN
HOUR ANGLE METHOD

- 5/8" X 30" CAPPED IRON PIN SET
- RAILROAD SPIKE SET

MOSES E. & AMANDA
RABER 188-897
TRACT ONE 160 AC.

N. 62° 44' 18" E.
354.11

N. 71° 46' 17" E.
166.58

This plat approved for existing
residential wastewater.

Mat Miller
Sanitarian

7-29-86
Date

3.940 Ac.

SPLIT
APPROVED
860017

60' R/W.
N. 47° 12' 48" W.
257.12

N. 48° 24' 02" W.
174.50

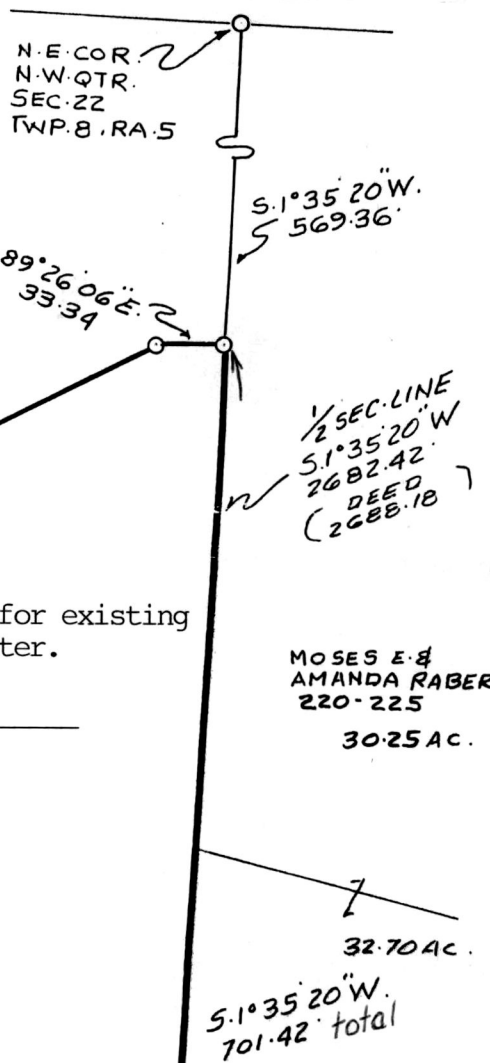
N. 44° 02' 40" W.
173.25

S. 77° 03' 34" W.
47.24

15' DRIVE
EASEMENT

- REFERENCES USED
- VOL. 188 - 897
 - VOL. 147 - 538
 - VOL. 220 - 225
 - SECTION PLAT
 - U.S.G.S MAP

MAP SHOWING SURVEY OF 3.940 AC.
FOR MOSES E. & AMANDA RABER
PART OF TRACT ONE VOL. 188, P. 897
IN THE N.W. QTR. SEC. 22 TWP. 8, RA 5
U.S.M.L CLARK TOWNSHIP
HOLMES COUNTY, OHIO



MOSES E. &
AMANDA RABER
220-225
30.25 AC.

32.70 AC.

S. 1° 35' 20" W.
701.42 total

152433

REC'D. AUG 4 1986
 AT 10:56 O'CLOCK 2:30
 RECORDED AUG 4 1986
 Plot VOL 10 PG. 587
 Holmes Co. Ohio Fees 5.00
Richard Graves Recorder

SURVEYED 6.17-86 BY



RICHARD MAX GRAVES
 REGISTERED SURVEYOR NO. 5792
 2925 KENLO WOODS DRIVE
 NASHPORT, OHIO 43830
 PHONE AREA C. 614-4541029
Richard Max Graves

Deed Vol. 231 Pg. 860

MAP OFFICE COPY