

SALT CREEK TOWNSHIP
HOLMES COUNTY, OHIO
SE QTR. SECTION 31, T-15N, R-12W

Ref:
Power Pole NE 36.8
Power Pole SE 68.1
Road Sign N 17.2

Surveyed For Leo Kaufman

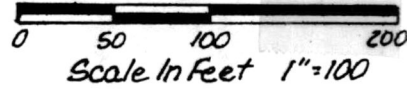
150855

REC'D. April 4, 1986
AT 12:23 O'CLOCK P.M.
RECORDED April 7, 1986
Plat VOL 18 PG. 545
Holmes Co. Ohio Fees 5.⁰⁰

Richard G. Brown Recorder

Deed Vol. 230-Pg. 732-734-736-
738-740-742-744-746-748-750

Estate Of John M. Kaufman
Deed Vol. 115, Pg. 161

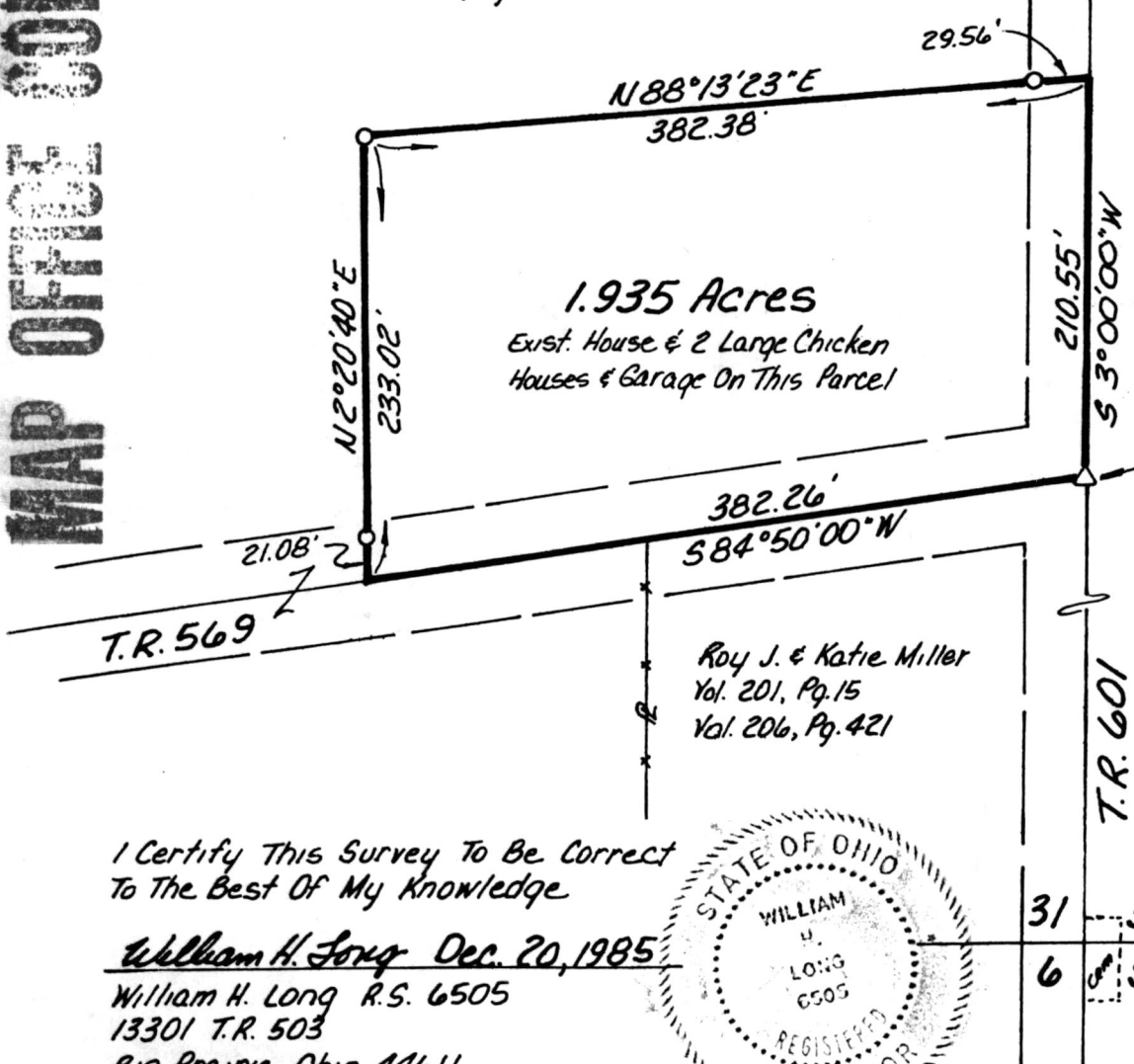


- △ R.R. Spike Set
- Iron Pin Set - 5/8" Rebar
With Yellow Cap Marked
"LONG - 6505"

Reference:
Plat Vol. 2, Pg 108

Bearings Assumed

MAP OFFICE COPY



Ref:
Power Pole NW 40.7
Power Pole Grounding
Stake - 1/2" Rod SE 27.9
Road Sign SW 40.8'

Roy J. & Katie Miller
Vol. 201, Pg. 15
Vol. 206, Pg. 421

Ref. For N.S. Line Used:
28.85' W. of W. Side Of
Base Of Sophia Armstrong
Grave Stone
12.60' W. Of 1" Iron Pipe Fd.

I Certify This Survey To Be Correct
To The Best Of My Knowledge
William H. Long Dec. 20, 1985
William H. Long R.S. 6505
13301 T.R. 503
Big Prairie, Ohio 44611



31 32
6 5