

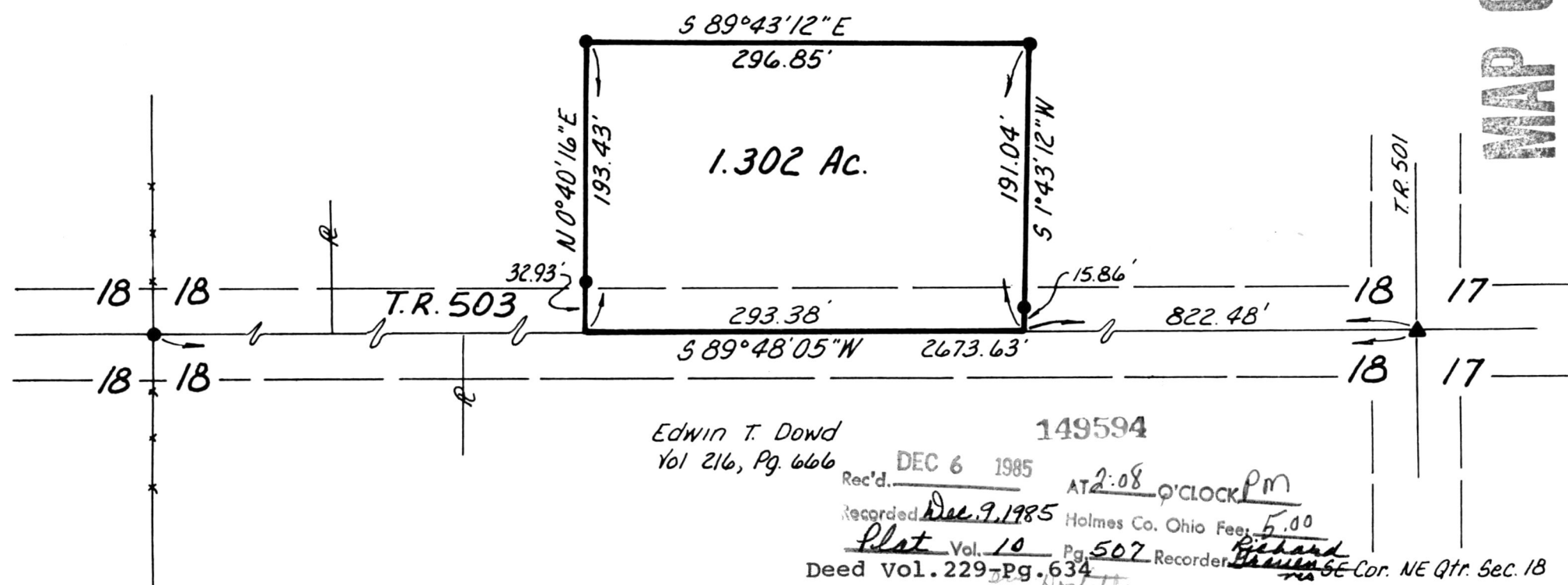
149594  
RIPLEY TOWNSHIP  
HOLMES COUNTY, OHIO  
NE QTR. SECTION 18, T-17N, R-14W  
Surveyed For Floyd & Eileen Wachtel

Bearings Assumed

- ▲ Railroad Spike Set
- Iron Rod Set - 5/8" Bar With Yellow Cap Marked "LONG-6505"

References: Deeds As Shown

Floyd & Eileen Wachtel  
Vol. 118, Pg. 307



Edwin T. Dowd  
Vol 216, Pg. 666

149594

Rec'd. DEC 6 1985 AT 2:08 O'CLOCK PM  
 Recorded Dec. 9, 1985 Holmes Co. Ohio Fee: 5.00  
Plat Vol. 10 Pg. 507 Recorder: Richard  
 Deed Vol. 229 Pg. 634

SW Cor. NE Qtr Sec 18  
I.P. Set In Center Of  
Road Opposite Fences



I Certify This Survey To Be Correct To  
The Best Of My Knowledge

William H. Long Oct 3, 1985  
William H. Long R.S. 6505  
13301 T.R. 503  
Big Prairie, Ohio 44611

SE-Cor. NE Qtr. Sec. 18  
R.R. Spike Set  
Face Guy Pole NW 32'  
PK. Nail In Power Pole SW 29.25'  
Ctr. 24" Maple NE 45.5'

MAP OFFICE COPY